

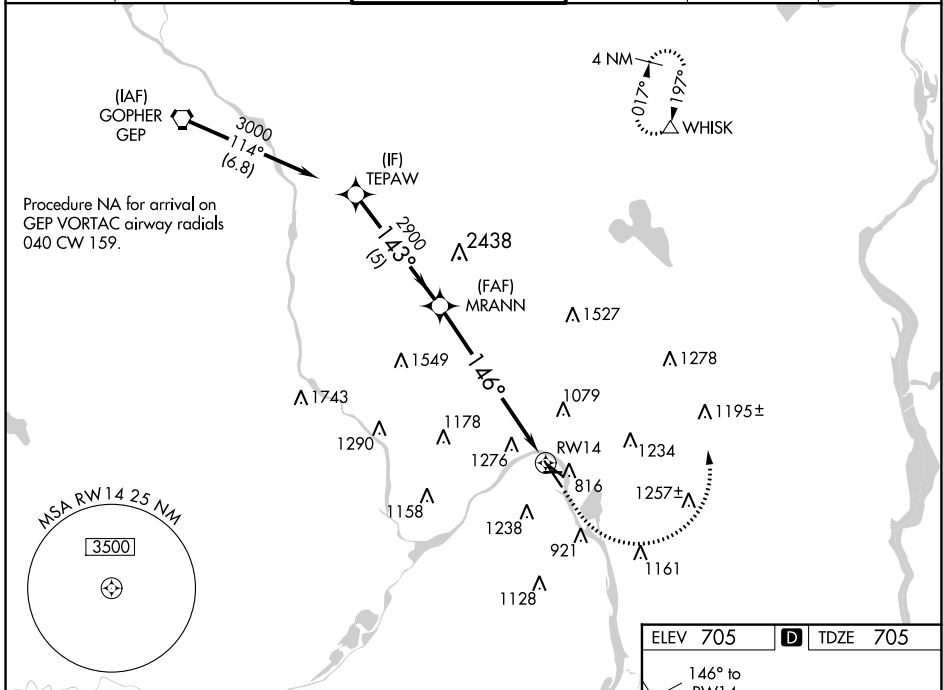
WAAS CH <b>62828</b> <b>W14A</b>	APP CRS <b>146°</b>	Rwy Idg TDZE Apt Elev	<b>6148</b> <b>705</b> <b>705</b>
--	------------------------	-----------------------------	---

# RNAV (GPS) RWY 14

ST PAUL DOWNTOWN HOLMAN FIELD (STP)

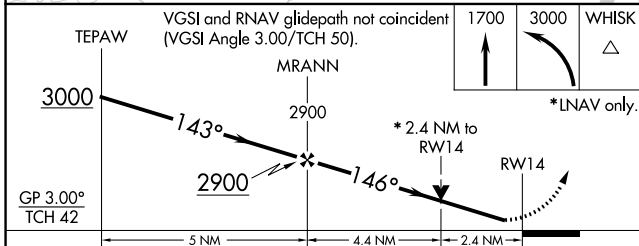
	For uncompensated Baro-VNAV systems, LNAV/VNAV NA below -21°C (-5°F) or above 54°C (130°F). Rwy 14 helicopter visibility reduction below 3/4 SM NA. DME/DME RNP-0.3 NA. For inop MALSR, increase LNAV Cats C and D to 2 1/2 SM.	MALSR 	MISSED APPROACH: (Do not exceed 250K until WHISK) Climb to 1700 then climbing left turn to 3000 direct WHISK and hold.

ATIS <b>118.35</b>	MINNEAPOLIS APP CON <b>121.2 335.65</b>	ST. PAUL TOWER ★ <b>119.1(CTAF) 0 257.8</b>	GND CON <b>121.675</b>	CLNC DEL <b>121.675</b>	UNICOM <b>122.95</b>
-----------------------	--	--	---------------------------	----------------------------	-------------------------

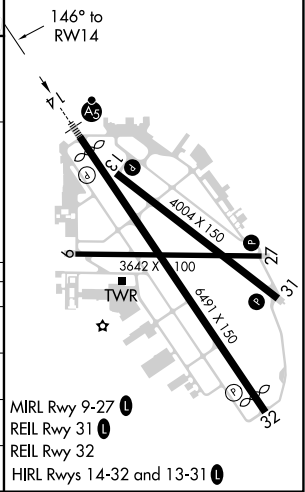


NC-1, 25 FEB 2021 to 25 MAR 2021

NC-1, 25 FEB 2021 to 25 MAR 2021



ELEV 705	<b>D</b> TDZE 705
----------	-------------------



CATEGORY	A	B	C	D
LPV DA	955/40		250 (300-3/4)	
LNAV/VNAV DA	1511-2 1/2		806 (900-2 1/2)	
LNAV MDA	1520/40 815 (900-3/4)		1520-1 7/8 815 (900-1 7/8)	
<b>C</b> CIRCLING	1580-1 1/4 875 (900-1 1/4)		1580-2 1/2 875 (900-2 1/2) 1580-2 3/4 875 (900-2 3/4)	

MIRL Rwy 9-27  
 REIL Rwy 31  
 REIL Rwy 32  
 HIRL Rwy 14-32 and 13-31