

ILS or LOC RWY 3L

LOC I-TXV 108.35	APCH CRS 035°	Rwy Idg 11,001 TDZE 34 Arprt Elev 63
----------------------------	-------------------------	-----------------------------------------------------------------

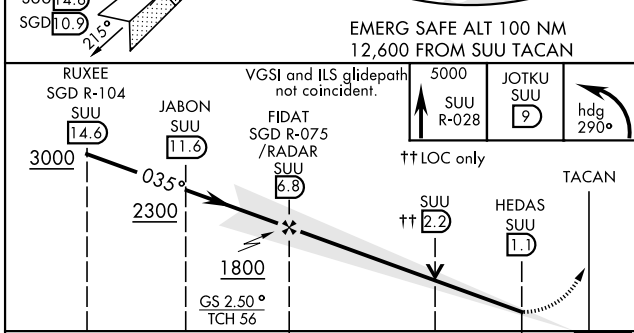
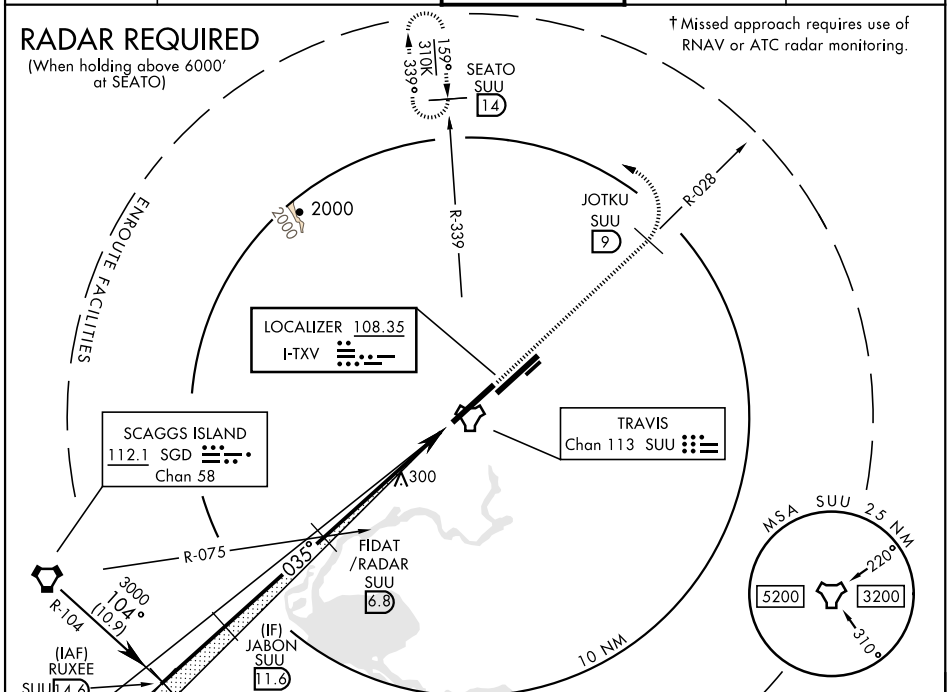
AL-488 [USAF]

TRAVIS AFB (KSUU)

▼ *When Rwy 3R VGSi inop, circling to Rwy 3R not authorized at night. Circling not authorized NW of Rwy 3L-21R.

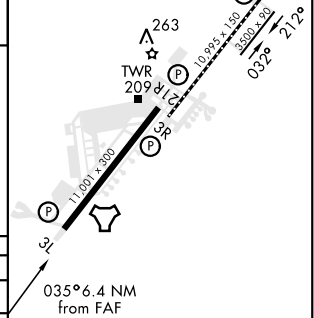
† MISSED APPROACH: Climb to 5000 on SUU R-028 to JOTKU. Then climbing left turn heading 290°, intercept SUU R-339 to SEATO and hold, continue climb and hold to 5000.

ATIS 135.55 292.125	TRAVIS APP CON 119.9 (S) 126.6 (N) 281.45	TRAVIS TOWER 120.75 254.4	GND CON 121.8 289.4	CLNC DEL 127.55 335.8
-------------------------------	-----------------------------------------------------	-------------------------------------	-------------------------------	---------------------------------



ELEV 63	TDZE 34
----------------	----------------

MIRL Rwy 032°-212°
TDZL/CL Rwy 3R-21L
HIRL Rwy 3L-21R, 3R-21L



CATEGORY	A	B	C	D	E
S-ILS 3L	234/40		200	(200-¾)	
S-LOC 3L	560/55	526 (500-1)	560-1½	526	(500-1½)
☐ CIRCLING*	560-1 497 (500-1)	580-1 517 (600-1)	1100-3 1037(1100-3)	1200-3	1137 (1200-3)

Knots					
60	90	120	150	180	
Min:Sec					
5:48	3:52	2:54	2:19	1:56	

ILS or LOC RWY 3L

SW-2, 25 FEB 2021 to 25 MAR 2021

SW-2, 25 FEB 2021 to 25 MAR 2021