

(OSVEE.OSVEE1) 17117

OSVEE ONE ARRIVAL (RNAV)

AL-488 (FAA)

TRAVIS AFB (KSUU)
FAIRFIELD, CALIFORNIA

ARRIVAL ROUTE DESCRIPTION

LIBBO TRANSITION (LIBBO.OSVEE1)

ROVUE TRANSITION (ROVUE.OSVEE1)

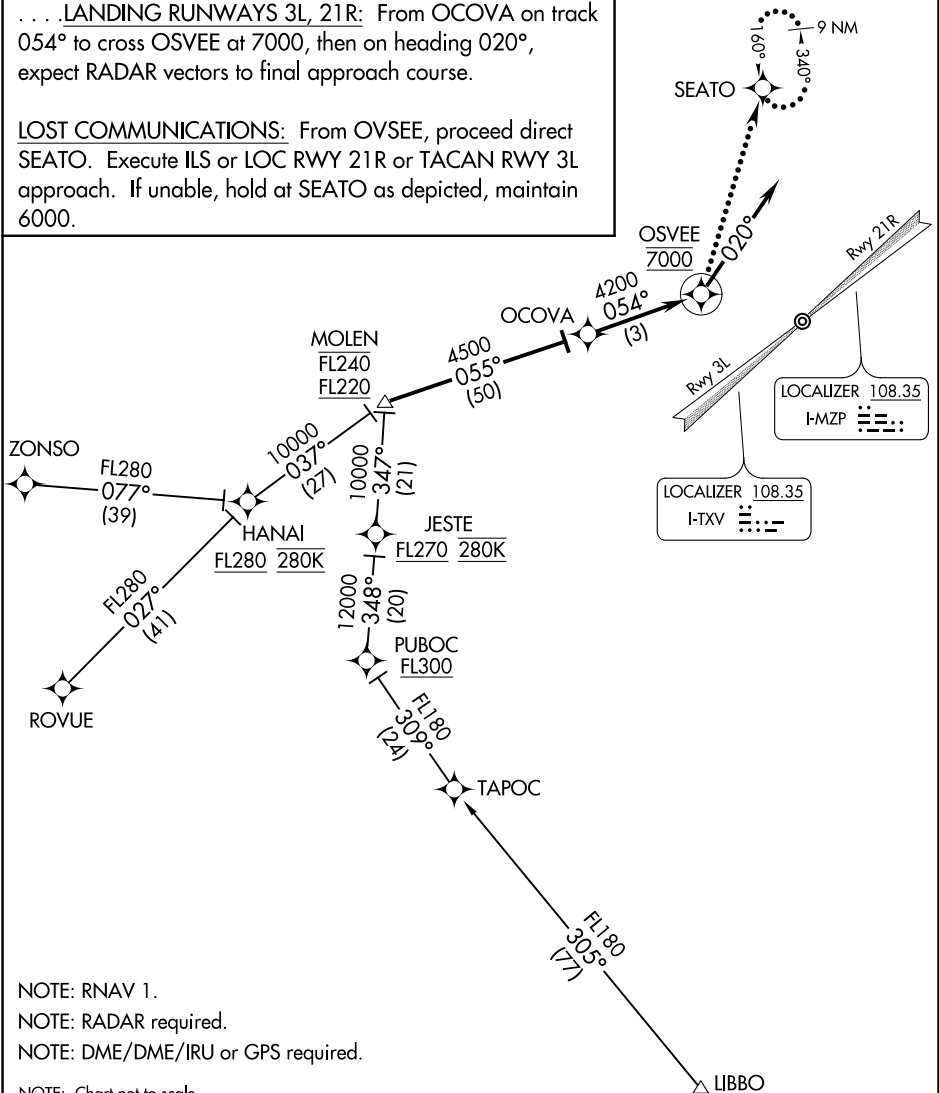
ZONSO TRANSITION (ZONSO.OSVEE1)

From MOLEN on track 055° to OCOVA, thence

. . . . LANDING RUNWAYS 3L, 21R: From OCOVA on track 054° to cross OSVEE at 7000, then on heading 020°, expect RADAR vectors to final approach course.

LOST COMMUNICATIONS: From OSVEE, proceed direct SEATO. Execute ILS or LOC RWY 21R or TACAN RWY 3L approach. If unable, hold at SEATO as depicted, maintain 6000.

TRAVIS APP CON
126.6 281.45 (N)
119.9 322.325 (S)
TRAVIS TOWER
120.75 254.4
GND CON
121.8 289.4
D-ATIS
135.55 292.125



- NOTE: RNAV 1.
- NOTE: RADAR required.
- NOTE: DME/DME/IRU or GPS required.
- NOTE: Chart not to scale.

SW-2, 25 FEB 2021 to 25 MAR 2021

SW-2, 25 FEB 2021 to 25 MAR 2021

OSVEE ONE ARRIVAL (RNAV)

(OSVEE.OSVEE1) 10JAN13

FAIRFIELD, CALIFORNIA
TRAVIS AFB (KSUU)