

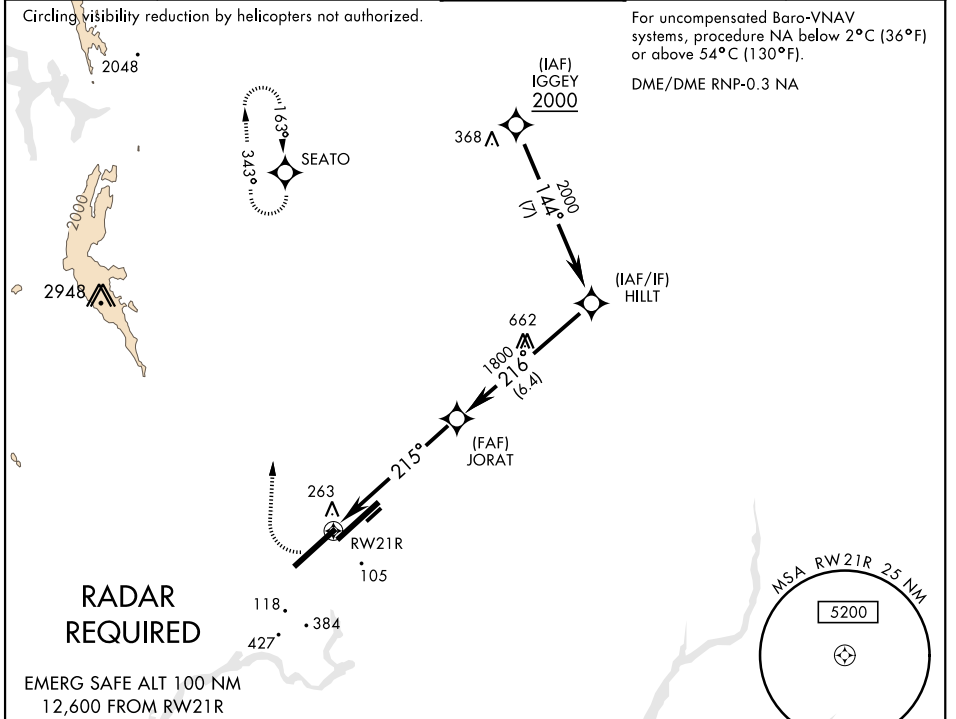
RNAV (GPS) RWY 21R

WAAS CH 71276 W 21B	APCH CRS 215°	Rwy ldg 11,001 TDZE 51 Arprt Elev 63
---	-------------------------	---

AL-488 [USAF]

TRAVIS AFB (KSUU)

<p>▼ * When Rwy 3R VGSI inop, circling to Rwy 3R not authorized at night. Circling not authorized NW of Rwy 3L-21R.</p>		<p>MISSED APPROACH: Climb to 2100 then climbing right turn to 4400 direct SEATO and hold, continue climb-in-hold to 4400.</p>		
ATIS 135.55 292.125	TRAVIS APP CON 119.9(S) 126.6(N) 281.45	TRAVIS TOWER 120.75 254.4	GND CON 121.8 289.4	CLNC DEL 127.55 335.8



ELEV 63	TDZE 51	<p>2100 4400 SEATO VGSI and RNAV glidepath not coincident (VGSI angle 2.80°/TCH 75) HILLT 2000</p>				
		<p>JORAT 216° 1800 RWY 21R 215° 1.4 NM to RWY 21R 6.0 NM GP 2.67° TCH 52</p>				
CATEGORY	A	B	C	D	E	
LPV DA		301-1	250	(300-1)		
RNAV/VNAV DA		475-1 5/8	424	(500-1%)		
RNAV MDA	540-1	489 (500-1)	540-1 3/8	489 (500-1%)		
CIRCLING*	540-1 477 (500-1)	580-1 517 (600-1)	1100-3 1037(1100-3)	1200-3	1137 (1200-3)	

RNAV (GPS) RWY 21R

SW-2, 25 FEB 2021 to 25 MAR 2021

SW-2, 25 FEB 2021 to 25 MAR 2021