

LOC I-SUX <b>109.3</b>	APP CRS <b>313°</b>	Rwy Idg TDZE Apt Elev	<b>9002</b> <b>1096</b> <b>1098</b>
---------------------------	------------------------	-----------------------------	---

# ILS or LOC RWY 31

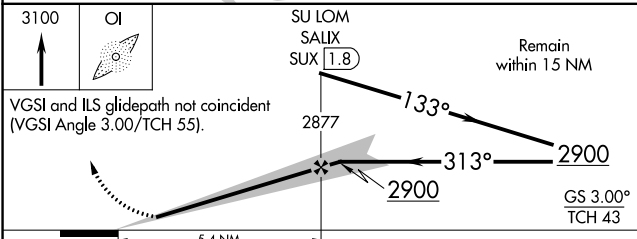
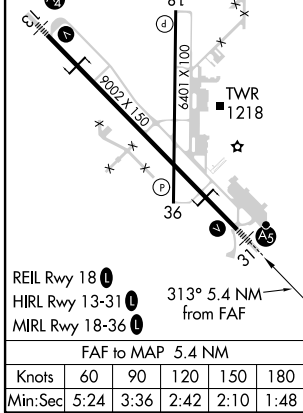
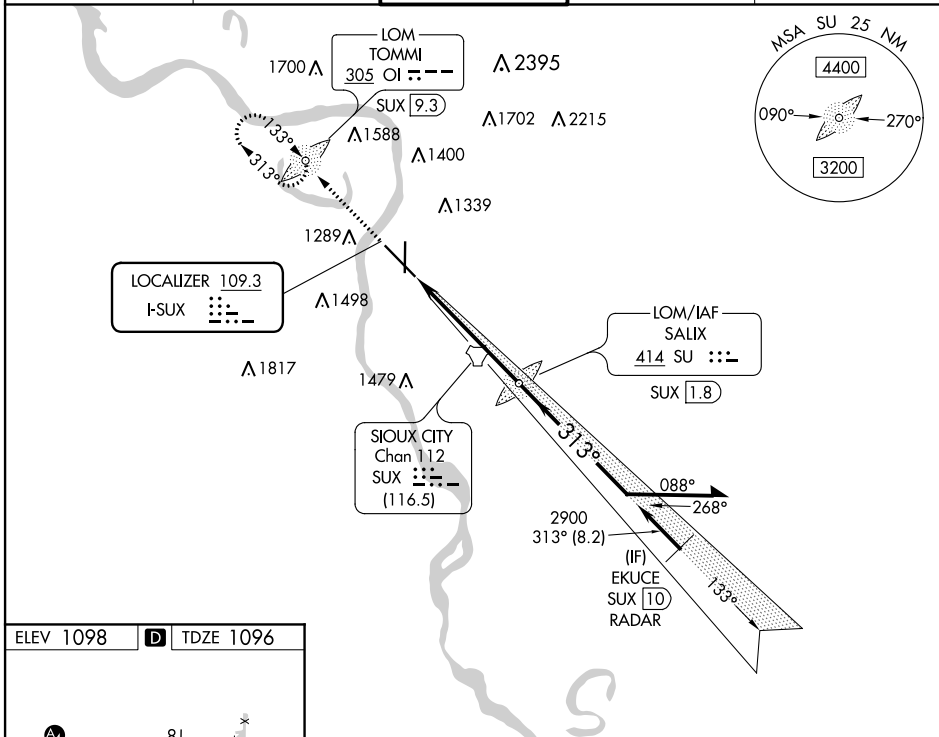
SIoux GATEWAY/BRIGADIER GENERAL BUD DAY FIELD (SUX)

ADF required. ADF or RADAR required for procedure entry.

**⚠** Autopilot coupled approach NA below 2025 MSL. For inop ALS, increase S-ILS 31 Cat E visibility to RVR 4000 and S-LOC 31 Cat C/D/E to 1 3/8 SM. \*RVR 1800 authorized with use of FD or AP or HUD to DA.

MALSR MISSED APPROACH: Climb to 3100 direct TOMMI LOM/SUX 9.3 DME and hold, continue climb-in-hold to 3100.

ATIS <b>119.45 270.8</b>	SIoux CITY APP CON * <b>124.6 307.0</b>	SIoux CITY TOWER * <b>118.7 (CTAF) 254.3</b>	GND CON <b>121.9 348.6</b>	UNICOM <b>122.95</b>
-----------------------------	--	---	-------------------------------	-------------------------



CATEGORY	A	B	C	D	E
	1296/24 200 (200-1/2)				
S-ILS 31*	1296/24 200 (200-1/2)				
S-LOC 31	1560/24	464 (500-1/2)	1560/50 464 (500-1)		
<b>C</b> CIRCLING	1640-1 542 (600-1)	1700-1 602 (700-1)	1700-1 3/4 602 (700-1 3/4)	1800-2 1/4 702 (800-2 1/4)	1940-3 842 (900-3)

# ILS or LOC RWY 31

NC-3, 25 FEB 2021 to 25 MAR 2021

NC-3, 25 FEB 2021 to 25 MAR 2021