

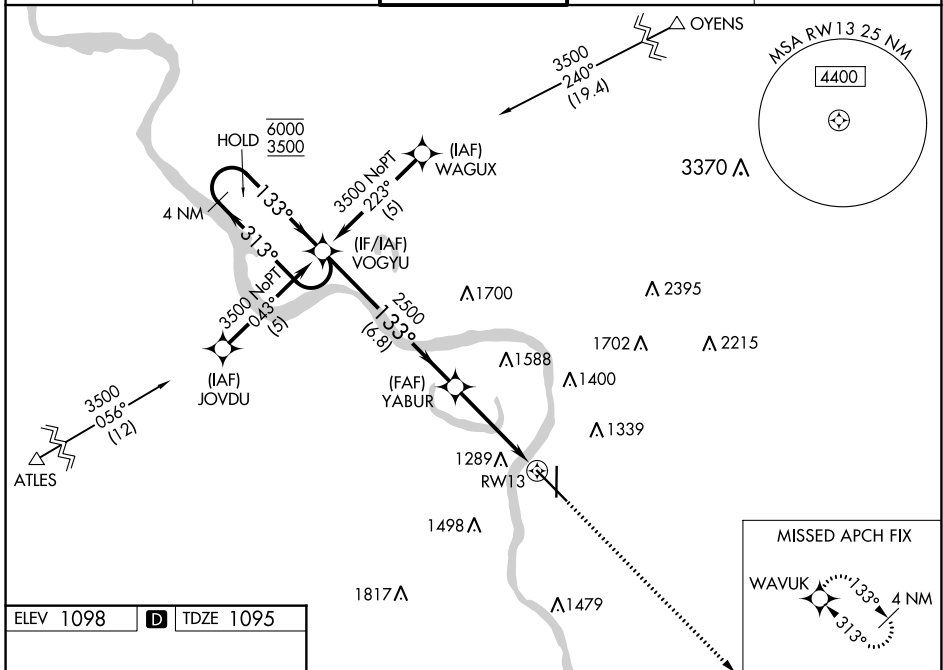
WAAS CH <b>57911</b> <b>W13A</b>	APP CRS <b>133°</b>	Rwy Idg TDZE Apt Elev	<b>9002</b> <b>1095</b> <b>1098</b>
--	------------------------	-----------------------------	---

# RNAV (GPS) RWY 13

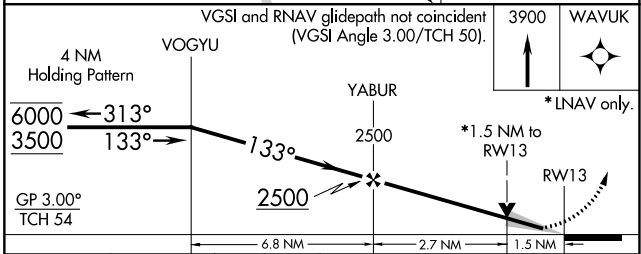
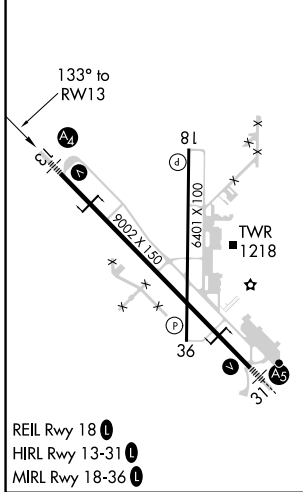
SIoux GATEWAY/BRIGADIER GENERAL BUD DAY FIELD (SUx)

RNP APCH.	MALS	MISSED APPROACH: Climb to 3900 direct WAVUK and hold.
<p>▼ Inop table does not apply to LPV all Cats. For uncompensated Baro-VNAV systems, LNAV/VNAV NA below -20°C or above 54°C. For inop ALS, increase LNAV/VNAV Cat E visibility to 1½ SM and LNAV Cat E visibility to 1½ SM.</p>		

ATIS <b>119.45 270.8</b>	SIoux CITY APP CON * <b>124.6 307.0</b>	SIoux CITY TOWER * <b>118.7 (CTAF) 0 254.3</b>	GND CON <b>121.9 348.6</b>	UNICOM <b>122.95</b>
-----------------------------	--	---	-------------------------------	-------------------------



ELEV 1098	<b>D</b>	TDZE 1095
-----------	----------	-----------



CATEGORY	A	B	C	D	E
LPV DA		1295/40	200 (200-¾)		
LNAV/VNAV DA		1582-1⅜	487 (500-1⅝)		
LNAV MDA	1620/40	525 (600-¾)	1620-1¼	525 (600-1¼)	
<b>C</b> CIRCLING	1640-1 542 (600-1)	1700-1 602 (700-1)	1700-1¾ 602 (700-1¾)	1840-2½ 742 (800-2½)	2000-3 902 (1000-3)

# RNAV (GPS) RWY 13

NC-3, 25 FEB 2021 to 25 MAR 2021

NC-3, 25 FEB 2021 to 25 MAR 2021