

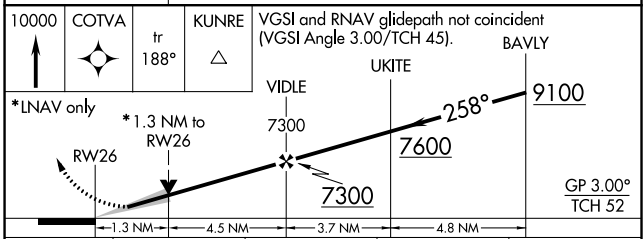
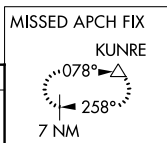
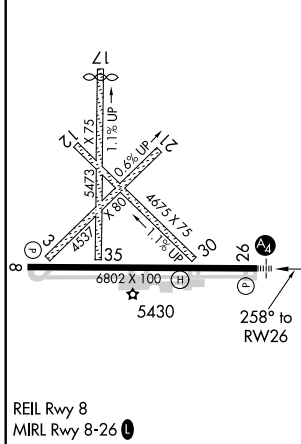
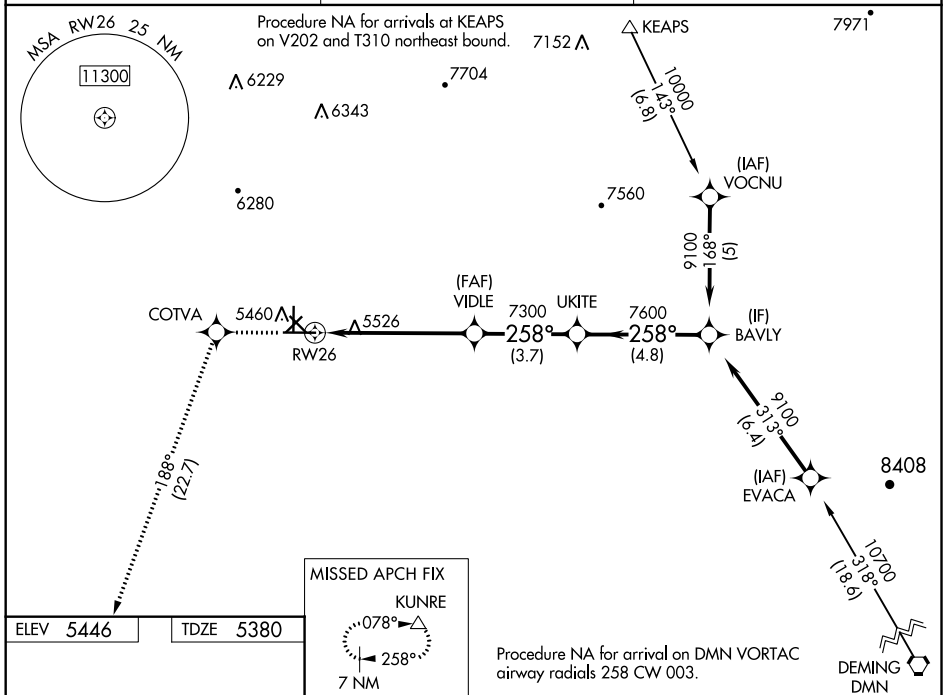
WAAS CH <b>87100</b> <b>W26A</b>	APP CRS <b>258°</b>	Rwy Idg TDZE Apt Elev	<b>6802</b> <b>5380</b> <b>5446</b>
--	------------------------	-----------------------------	---

# RNAV (GPS) RWY 26

GRANT COUNTY (SVC)

RNP APCH.	MALS	MISSED APPROACH: Climb to 10000 direct COTVA and on track 188° to KUNRE and hold.
<p>⚠ Circling to Rwy 3, 12, 17, 21, 30, 35 NA at night. Inop table does not apply to LPV. For uncompensated Baro-VNAV systems, LNAV/VNAV NA below -25°C or above 38°C. For inop ALS, increase LNAV Cat C/D visibility to 1½ SM. When local altimeter setting not received, procedure NA.</p>		

AWOS-3 <b>126.725</b>	ALBUQUERQUE CENTER <b>134.45 327.15</b>	UNICOM <b>122.8 (CTAF)</b>
--------------------------	--	-------------------------------



CATEGORY	A	B	C	D
LPV DA	5630-¾ 250 (200-¾)			
LNAV/VNAV DA	5789-1½ 409 (400-1½)			
LNAV MDA	5840-¾ 460 (400-¾)	5840-1 460 (400-1)	5840-1½ 460 (400-1½)	5840-2 460 (400-2)
CIRCLING	5880-1 434 (500-1)	5900-1 454 (500-1)	5940-1½ 494 (500-1½)	6000-2 554 (600-2)

SW-1, 25 FEB 2021 to 25 MAR 2021

SW-1, 25 FEB 2021 to 25 MAR 2021