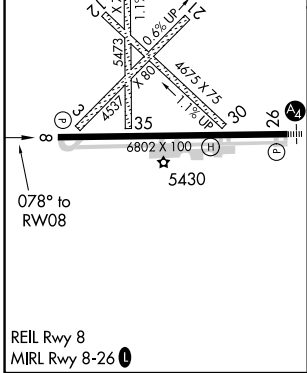
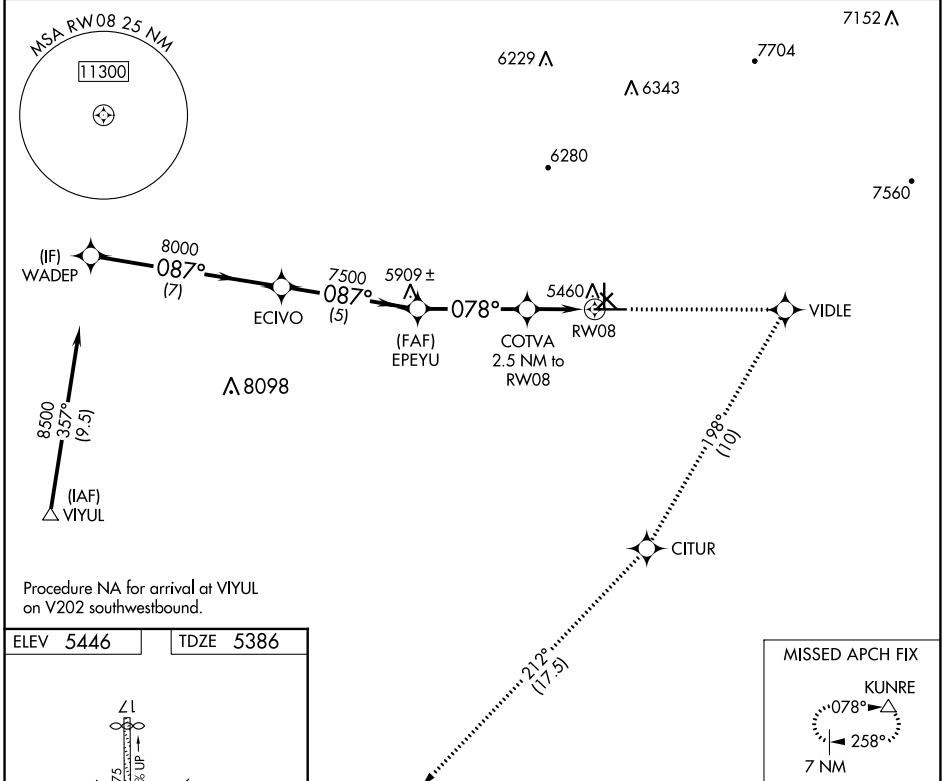


APP CRS	Rwy Idg	<b>6802</b>
<b>078°</b>	TDZE	<b>5386</b>
	Apt Elev	<b>5446</b>

# RNAV (GPS) RWY 8

GRANT COUNTY (SVC)

RNP APCH.		MISSED APPROACH: Climb to 10000 direct VIDLE and right turn via 198° track to CITUR and via 212° track to KUNRE and hold.
▼ If local altimeter setting not received, procedure NA. Rwy 8 helicopter visibility reduction below 3/4 SM NA.		
AWOS-3 <b>126.725</b>	ALBUQUERQUE CENTER <b>134.45 327.15</b>	UNICOM <b>122.8 (CTAF) 0</b>



VGSI and descent angles not coincident (VGSI Angle 3.00/TCH 44).	10000	VIDLE	198° tr	CITUR	212° tr	KUNRE
WADEP	ECIVO	EPEYU	COTVA 2.5 NM to RW08	0.9 NM to RW08	RW08	
CATEGORY A B C D LNAV MDA 5700-1 314 (300-1)						

SW-1, 25 FEB 2021 to 25 MAR 2021

SW-1, 25 FEB 2021 to 25 MAR 2021