

APP CRS	Rwy Idg	<b>4000</b>
<b>163°</b>	TDZE	<b>746</b>
	Apt Elev	<b>746</b>

# RNAV (GPS) RWY 16

SHERMAN MUNI (SWI)

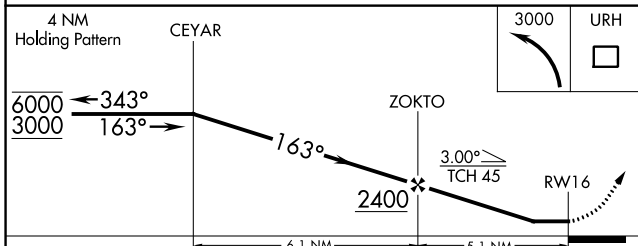
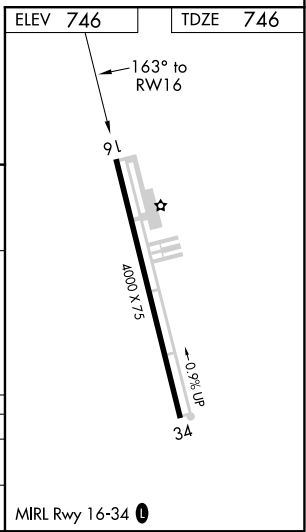
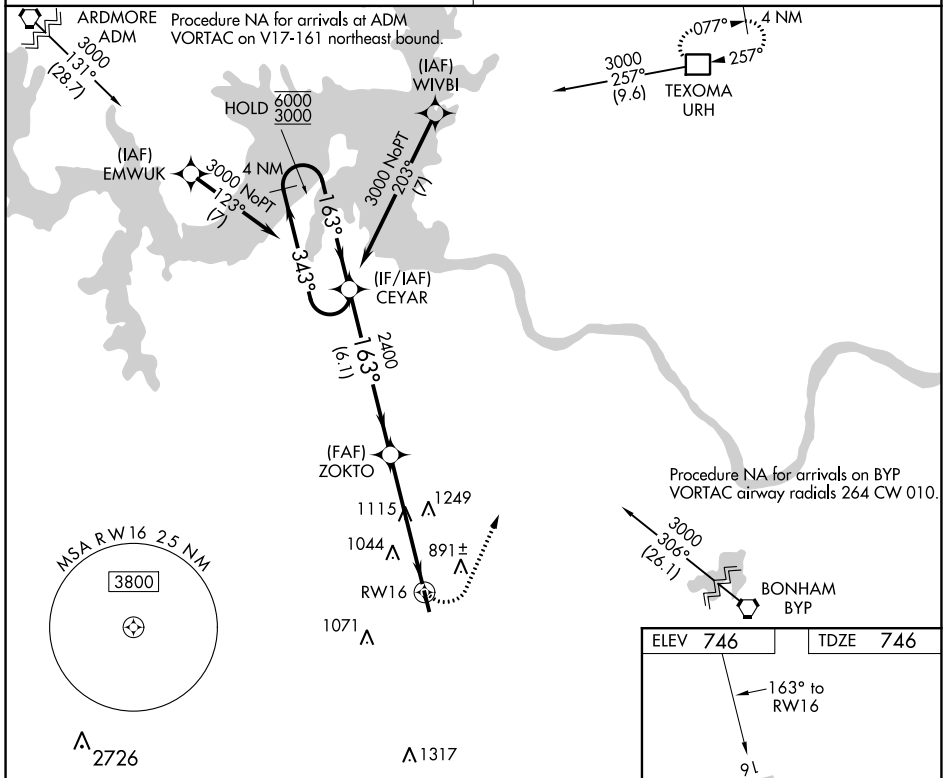
RNP APCH

Use Sherman/Denison altimeter setting, if not received use Dallas Love Field altimeter setting and increase all MDA 140 feet and increase LNAV visibility Cat B 1/4 SM, Cat C 1/2 SM, and increase Circling visibility Cats A/B 1/4 SM, Cat C 1/2 SM. Procedure NA at night. Rwy 16 helicopter visibility reduction below 1 SM NA.

MISSED APPROACH:  
Climbing left turn to 3000 direct URH DME and hold.

FORT WORTH CENTER  
**124.75 323.0**

UNICOM  
**122.8 (CTAF) 0**



CATEGORY	A	B	C	D
LNAV MDA	1440-1	694 (700-1)	1440-2 694 (700-2)	NA
CIRCLING	1440-1	694 (700-1)	1620-2 1/2 874 (900-2 1/2)	NA

SC-2, 25 FEB 2021 to 25 MAR 2021

SC-2, 25 FEB 2021 to 25 MAR 2021