

VORTAC BYP 114.6 Chan 93	APP CRS 280°	Rwy Idg TDZE Apt Elev N/A N/A 746
--	------------------------	---

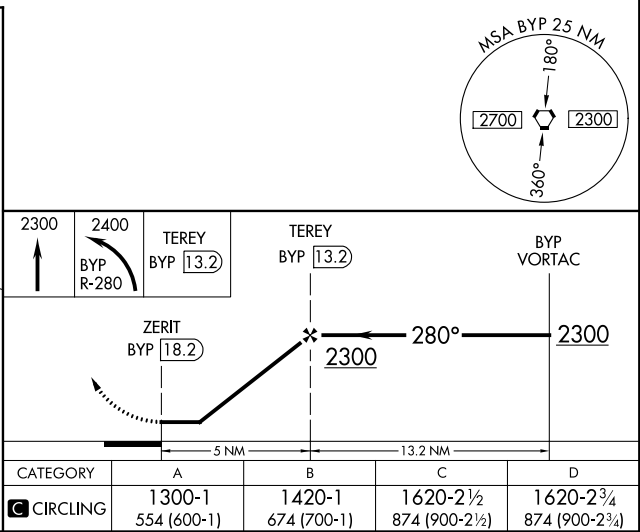
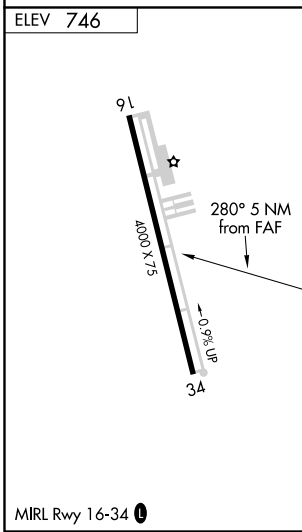
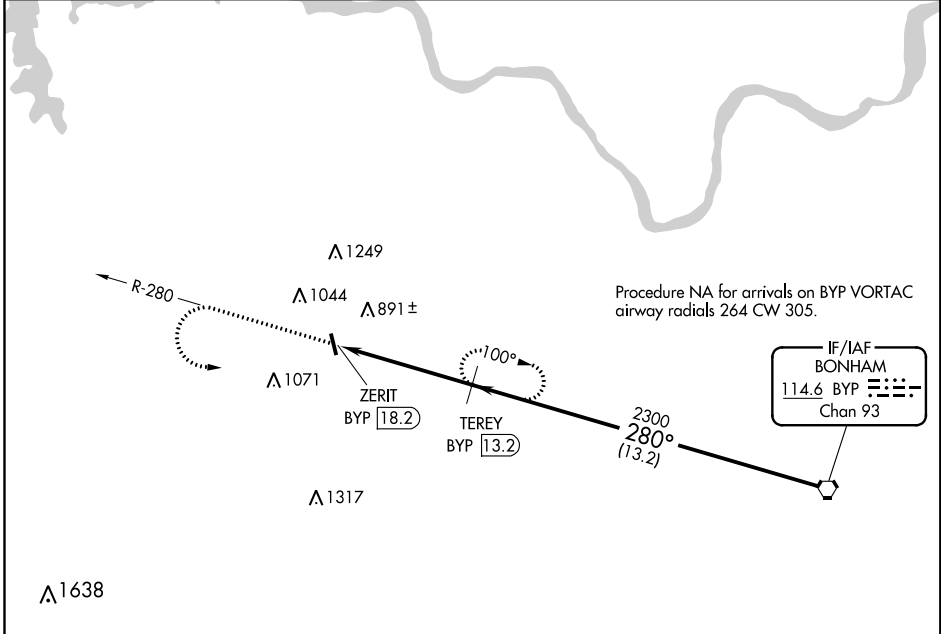
VOR/DME-A

SHERMAN MUNI (SWI)

⚠ Use Sherman/Denison altimeter setting, when not received, use Dallas-Love Field altimeter setting and increase all MDA 140 feet, increase visibility Cat B ¼ mile, Cat C ½ mile, and Cat D ¼ mile. Procedure NA at night.
⚠ NA Helicopter visibility reduction below 1 SM NA.

MISSED APPROACH: Climb to 2300, then climbing left turn to 2400 on BYP R-280 to TEREY/13.2 DME and hold.

FORT WORTH CENTER 124.75 323.0	UNICOM 122.8 (CTAF) 0
--	---------------------------------



SC-2, 25 FEB 2021 to 25 MAR 2021

SC-2, 25 FEB 2021 to 25 MAR 2021