

| | | | |
|-------------|---------|----------|------|
| VOR/DME SWO | APP CRS | Rwy Idg | 7401 |
| 108.4 | 178° | TDZE | 1000 |
| Chan 21 | | Apt Elev | 1000 |

VOR RWY 17

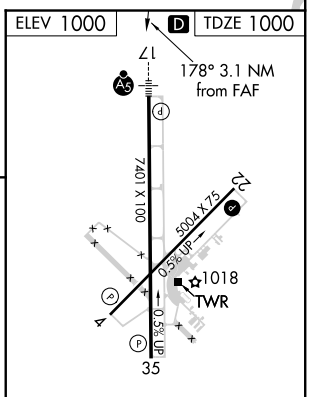
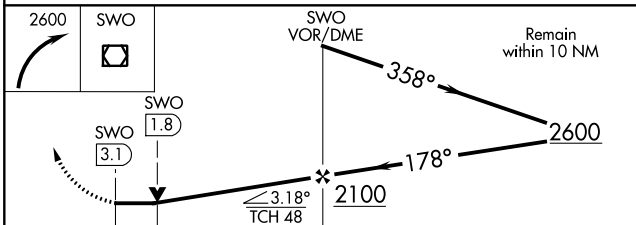
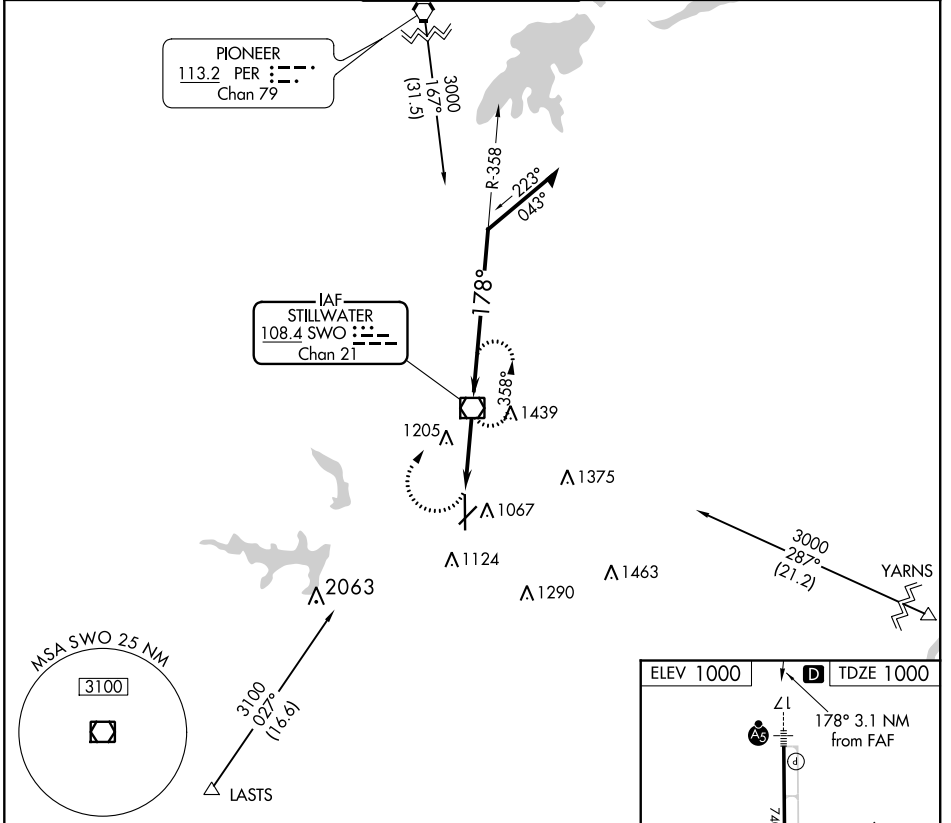
STILLWATER RGNL (SWO)

When local altimeter setting not received, use Ponca City Rgnl altimeter setting and increase all MDA 80 feet and Circling Cat D visibility ½ mile. VDP NA with Ponca City altimeter setting. For inop MALSRL increase S-17 Cats A/B visibility to 1 mile. Helicopter visibility reduction below ¾ SM NA.



MISSED APPROACH:
Climbing right turn to 2600 direct SWO VOR/DME and hold.

| | | | | |
|---------|--------------------|--------------------|---------|--------|
| ASOS | KANSAS CITY CENTER | STILLWATER TOWER ★ | GND CON | UNICOM |
| 135.725 | 127.8 319.1 | 125.35 (CTAF) 0 | 121.6 | 122.95 |



| CATEGORY | A | B | C | D |
|----------|--------|-------------|-------------------------|-------------------------|
| S-17 | 1460-¾ | 460 (500-¾) | | 1460-1 460 (500-1) |
| CIRCLING | 1460-1 | 460 (500-1) | 1520-1½ 520 (600-1½) | 1740-2¼ 740 (800-2¼) |

REIL Rwy 35 0
MIRL Rwy 4-22 and 17-35 0

| FAF to MAP 3.1 NM | | | | | |
|-------------------|------|------|------|------|------|
| Knots | 60 | 90 | 120 | 150 | 180 |
| Min:Sec | 3:06 | 2:04 | 1:33 | 1:14 | 1:02 |

SC-1, 25 FEB 2021 to 25 MAR 2021

SC-1, 25 FEB 2021 to 25 MAR 2021