

VOR/DME SWO 108.4 Chan 21	APP CRS 356°	Rwy Idg 7401 TDZE 966 Apt Elev 1000
--	------------------------	--

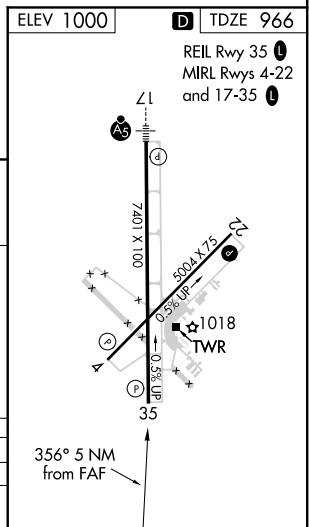
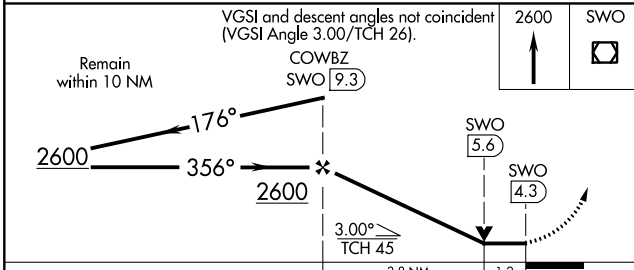
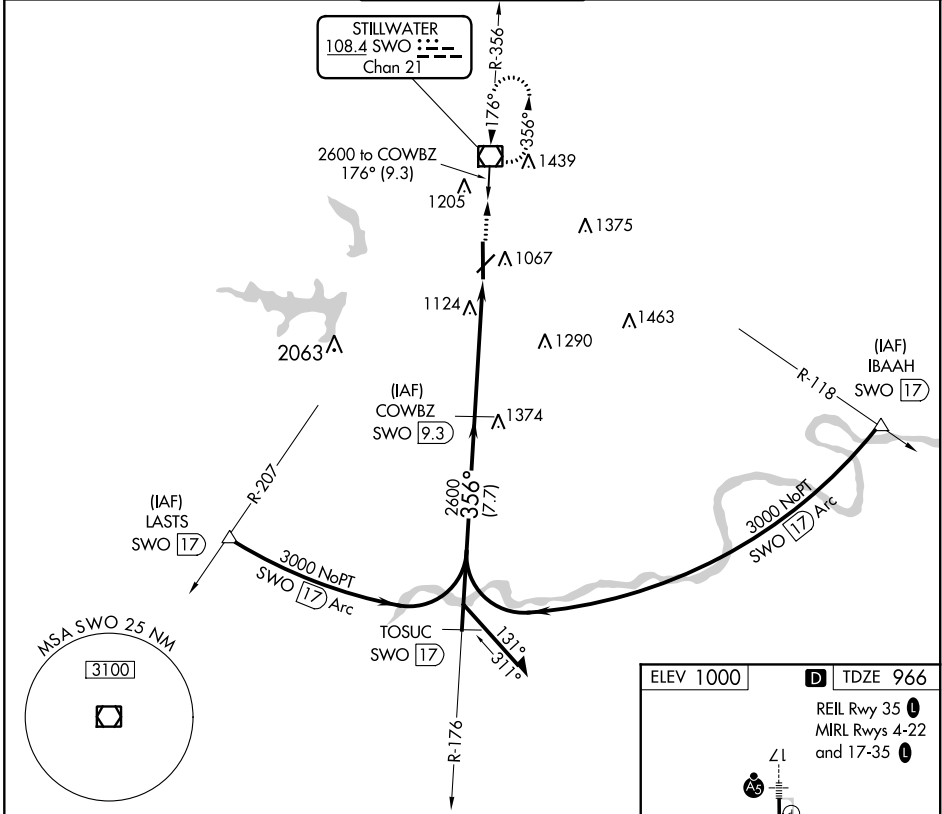
VOR/DME RWY 35

STILLWATER RGNL (SWO)

⚠ When local altimeter setting not received, use Ponca City Rgnl altimeter setting and increase all MDA 80 feet; S-35 Cats C/D visibility 1/4 mile; Circling Cat D visibility 1/2 mile. VDP NA with Ponca City altimeter setting.

MISSED APPROACH: Climb to 2600 direct SWO VOR/DME and hold.

ASOS 135.725	KANSAS CITY CENTER 127.8 319.1	STILLWATER TOWER ★ 125.35 (CTAF) 0	GND CON 121.6	UNICOM 122.95
------------------------	--	--	-------------------------	-------------------------



CATEGORY	A	B	C	D
S-35	1380-1	414 (400-1)	1380-1 1/4	414 (400-1 1/4)
CIRCLING	1420-1 420 (500-1)	1460-1 460 (500-1)	1520-1 1/2 520 (600-1 1/2)	1740-2 1/4 740 (800-2 1/4)

SC-1, 25 FEB 2021 to 25 MAR 2021

SC-1, 25 FEB 2021 to 25 MAR 2021