

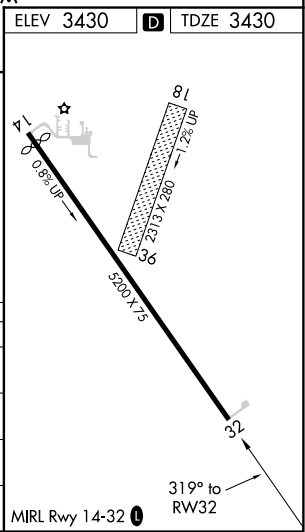
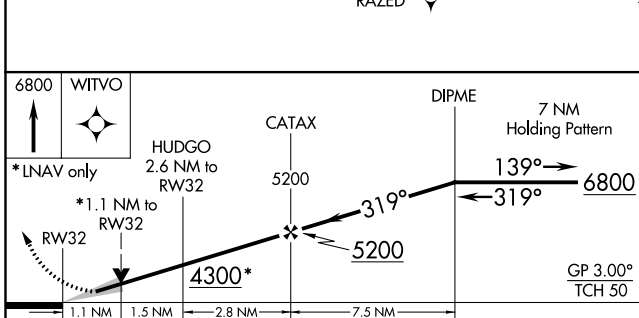
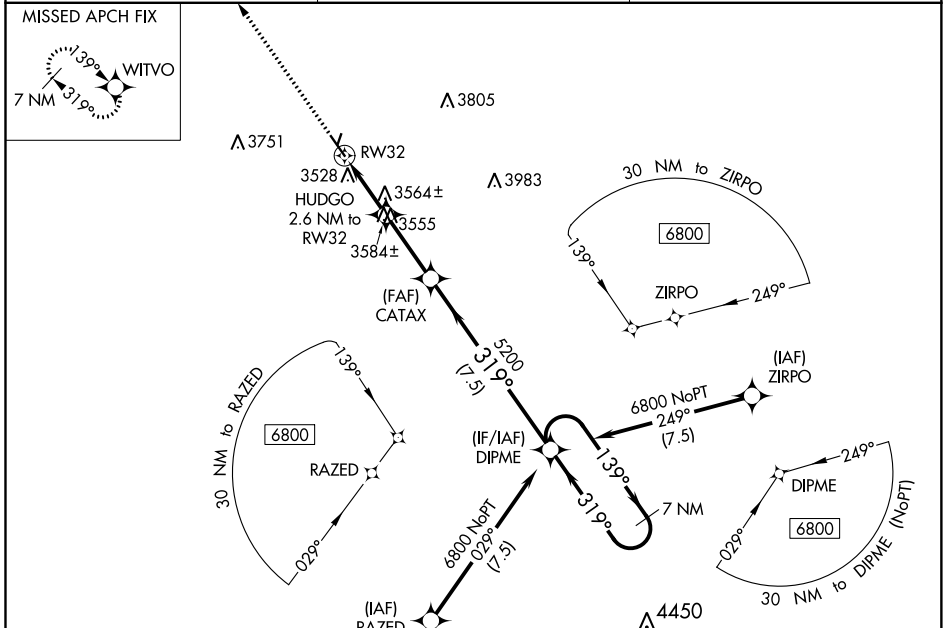
WAAS CH 45839 W32A	APP CRS 319°	Rwy ldg TDZE Apt Elev	5200 3430 3430
--	------------------------	-----------------------------	---

RNAV (GPS) RWY 32

CHEYENNE COUNTY MUNI (SYF)

RNP APCH.	MISSED APPROACH: Climb to 6800 direct WITVO and hold, continue climb-in-hold to 6800.
Circling NA to Rwy 18 and 36. For uncompensated Baro-VNAV systems, LNAV/VNAV NA below -21°C or above 54°C.	

AWOS-3 118.925	DENVER CENTER 132.7 226.675	UNICOM 122.8 (CTAF) 0
--------------------------	---------------------------------------	---------------------------------



CATEGORY	A	B	C	D
LPV DA	3680-1	250 (300-1)		NA
LNAV/VNAV DA	3680-1	250 (300-1)		NA
LNAV MDA	3820-1	390 (400-1)	3820-1 $\frac{1}{8}$ 390 (400-1 $\frac{1}{8}$)	NA
CIRCLING	3840-1 410 (500-1)	3880-1 450 (500-1)	3900-1 $\frac{1}{2}$ 470 (500-1 $\frac{1}{2}$)	NA

NC-2, 25 FEB 2021 to 25 MAR 2021

NC-2, 25 FEB 2021 to 25 MAR 2021