

WAAS CH 40408 W17A	APP CRS 165°	Rwy Idg TDZE Apt Elev	5002 607 610
--	------------------------	-----------------------------	---

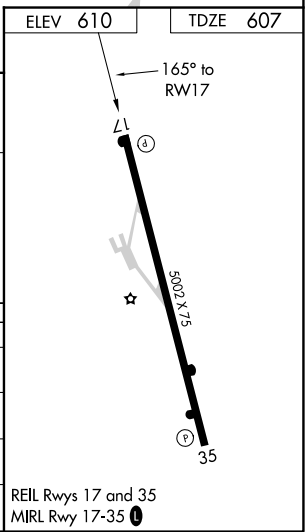
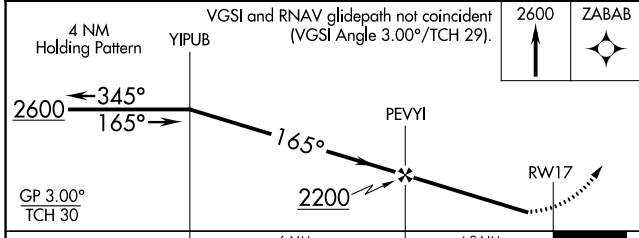
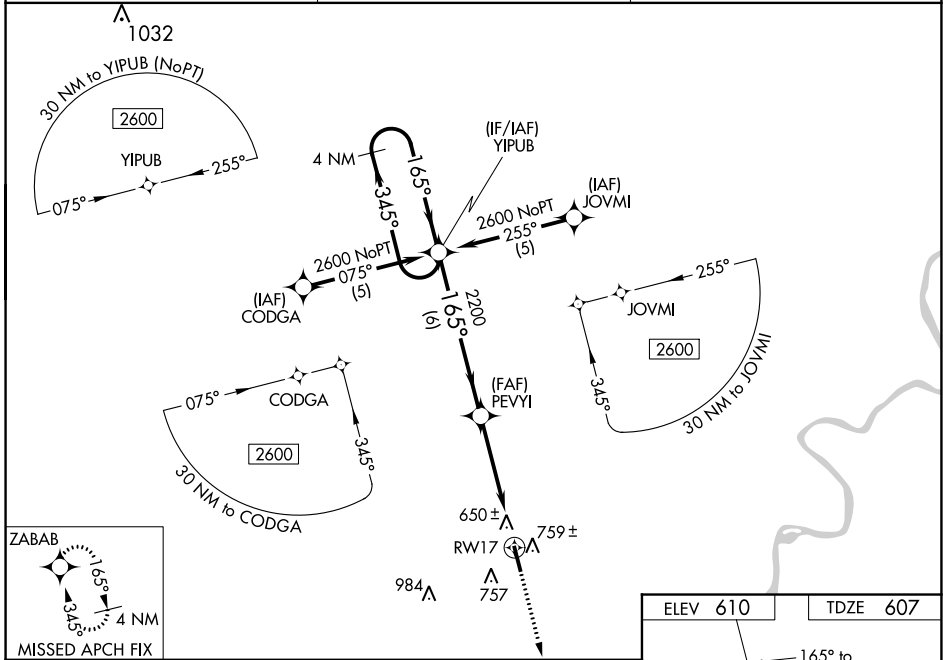
RNAV (GPS) RWY 17

ROBERT SIBLEY (SZY)

⚠ Baro-VNAV NA when using Mc Kellar-Sipes Rgnl altimeter setting. For uncompensated Baro-VNAV systems, LNAV/VNAV NA below -16°C (4°F) or above 47°C (116°F). DME/DME RNP-0.3 NA. Helicopter visibility reduction below 1 SM not authorized. When local altimeter setting not received, use Mc Kellar-Sipes Rgnl altimeter setting and increase all DA 97 feet and all MDA 100 feet, LPV and LNAV/VNAV all Cats and LNAV Cat C visibilities ½ mile, and LNAV Cat D visibility ½ mile. Straight-in/Circling Rwy 17 procedure NA at night.

⚠ MISSED APPROACH: Climb to 2600 direct ZABAB and hold.

AWOS-3 118.425	MEMPHIS CENTER 124.35 239.3	UNICOM 122.7 (CTAF) 0
--------------------------	---------------------------------------	---------------------------------



CATEGORY	A	B	C	D
LPV DA	861-1		254 (300-1)	
LNAV/VNAV DA	1055-1¾		448 (500-1¾)	
LNAV MDA	1020-1	413 (500-1)	1020-1¼	413 (500-1¼)
CIRCLING	1060-1 450 (500-1)	1080-1 470 (500-1)	1080-1½ 470 (500-1½)	1160-2 550 (600-2)

REIL Rwy 17 and 35
MRL Rwy 17-35 0

SE-1, 25 FEB 2021 to 25 MAR 2021

SE-1, 25 FEB 2021 to 25 MAR 2021