

|  |                        |                             |   |
|--|------------------------|-----------------------------|---|
| WAAS<br>CH <b>86608</b><br><b>W35A</b> | APP CRS<br><b>345°</b> | Rwy Idg<br>TDZE<br>Apt Elev | <b>5002</b><br><b>610</b><br><b>610</b> |
|--|------------------------|-----------------------------|---|

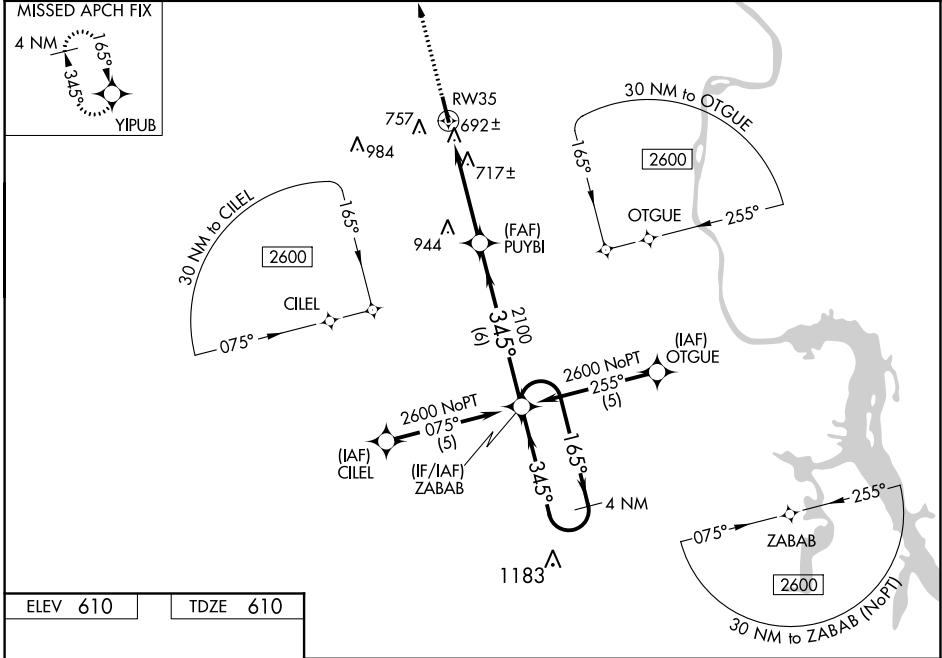
# RNAV (GPS) RWY 35

ROBERT SIBLEY (SZY)

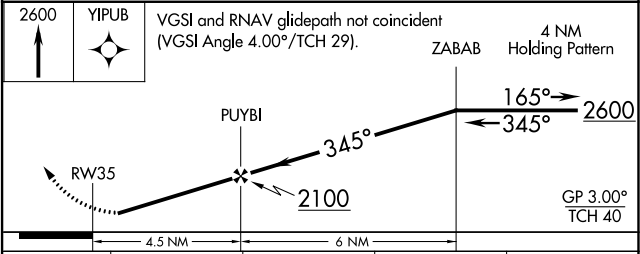
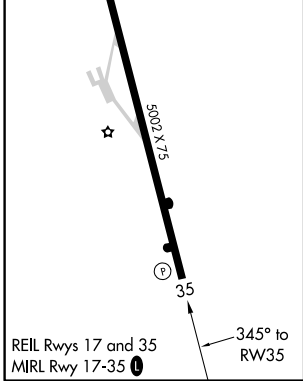
**NA** Baro-VNAV NA when using Mc Kellar-Sipes Rgnl altimeter setting. For uncompensated Baro-VNAV systems, LNAV/VNAV NA below -16°C (4°F) or above 47°C (116°F). DME/DME RNP-0.3 NA. Helicopter visibility reduction below 1 SM not authorized. When local altimeter setting not received, use Mc Kellar-Sipes Rgnl altimeter setting and increase all DA 97 feet and all MDA 100 feet, LPV all Cats and LNAV Cats C and D visibilities ¼ mile and LNAV/VNAV all Cats visibility ½ mile. Straight-in/Circling Rwy 35 procedure NA at night.

**MISSED APPROACH:**  
Climb to 2600 direct YIPUB and hold.

|                                 |  |  |
|---------------------------------|--|--|
| <b>AWOS-3</b><br><b>118.425</b> | <b>MEMPHIS CENTER</b><br><b>124.35 239.3</b> | <b>UNICOM</b><br><b>122.7 (CTAF) 0</b> |
|---------------------------------|--|--|



|          |          |
|----------|----------|
| ELEV 610 | TDZE 610 |
|----------|----------|



| CATEGORY     | A                     | B                     | C                       | D                      |
|--------------|-----------------------|-----------------------|-------------------------|------------------------|
| LPV DA       |                       | 944-1¼                | 334 (400-1¼)            |                        |
| LNAV/VNAV DA |                       | 986-1¼                | 376 (400-1¼)            |                        |
| LNAV MDA     |                       | 980-1                 | 370 (400-1)             | 980-1¼<br>370 (400-1¼) |
| CIRCLING     | 1060-1<br>450 (500-1) | 1080-1<br>470 (500-1) | 1080-1½<br>470 (500-1½) | 1160-2<br>550 (600-2)  |

SE-1, 25 FEB 2021 to 25 MAR 2021

SE-1, 25 FEB 2021 to 25 MAR 2021