

APP CRS 215°	Rwy Idg 5500
	TDZE 5757
	Apt Elev 5762

RNAV (GPS) RWY 21

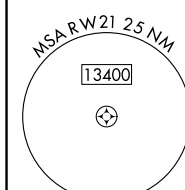
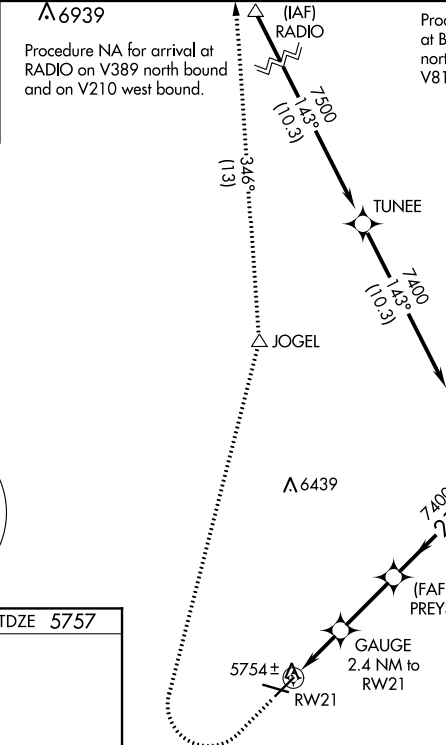
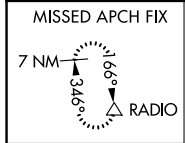
PERRY STOKES (TAD)

⚠ Circling NA to Rwys 9 and 27. DME/DME RNP-0.3 NA. When local altimeter setting not received, use Pueblo altimeter setting and increase all MDA 300 feet: increase LNAV Cat C/D visibility ½ SM, Circling Cat B/D visibility ¼ SM and Circling Cat C visibility 1 SM. VDP NA when using Pueblo altimeter setting.

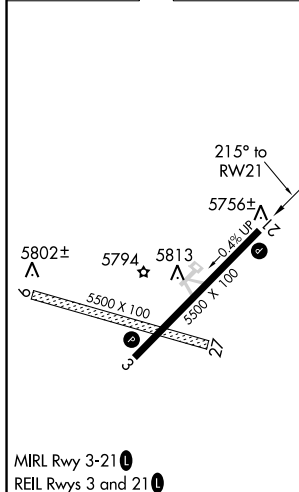
❄ -26°C

MISSED APPROACH: Climb to 6200 then climbing right turn to 10000 direct JOGEL and on track 346° to RADIO and hold.

ASOS 119.025	DENVER CENTER 128.375 379.95	UNICOM 122.8 (CTAF)
------------------------	--	-------------------------------



ELEV 5762	TDZE 5757
-----------	-----------



6200	10000	JOGEL	tr 346°	RADIO	PREYS	GOERS
↑	↷	△	△	△		
		Gauge 2.4 NM to RWY 21		≤ 3.00° TCH 40	7400	7400
		0.8 NM to RWY 21	0.8 NM	1.6 NM	2.7 NM	5 NM
CATEGORY	A		B		C	D
LNAV MDA	6020-1 263 (300-1)					
CIRCLING	6180-1 418 (500-1)	6300-1 538 (600-1)	6340-1½ 578 (600-1½)	6580-2¾ 818 (900-2¾)		

TRINIDAD, COLORADO
Orig 15SEP16

37°16'N-104°20'W

RNAV (GPS) RWY 21

SW-1, 25 FEB 2021 to 25 MAR 2021

SW-1, 25 FEB 2021 to 25 MAR 2021