

APP CRS 359°	Rwy Idg TDZE Apt Elev	4001 622 622
------------------------	-----------------------------	---

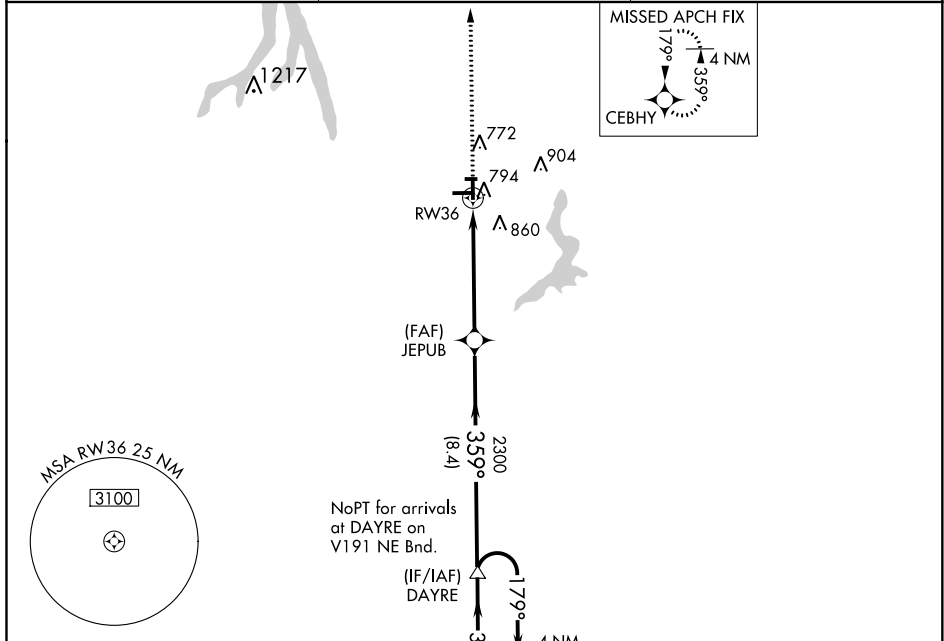
RNAV (GPS) RWY 36

TAYLORVILLE MUNI (TAZ)

⚠ If local altimeter setting not received, use Springfield altimeter setting and increase all MDAs 80 feet. When VGSI inop, circling Rwy 18 NA at night.
⚠ DME/DME RNP-0.3 NA. LNAV MDA minimums NA at night.

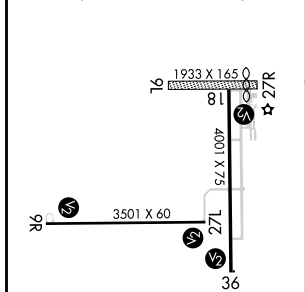
MISSED APPROACH: Climb to 2300 direct CEBHY and hold.

AWOS-3 123.875 395.0	SPRINGFIELD APP CON ★ 126.15 323.0	UNICOM 122.8 (CTAF) 0
--------------------------------	--	---------------------------------

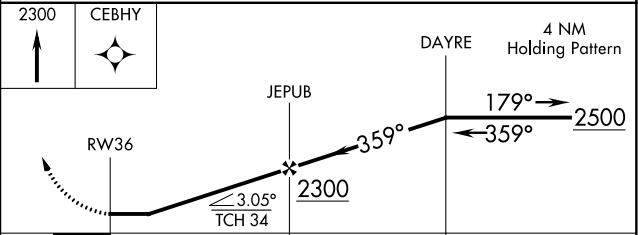


ELEV 622	TDZE 622
-----------------	-----------------

REIL Rwy 9R, 27L and 18
 MIRL Rwy 9R-27L and 18-36



NoPT for arrivals at DAYRE on V191 NE Bnd.
 (IF/IAF) DAYRE
 Procedure NA for arrivals at VLA VORTAC on arrival radials 269 CW 029.
 (IAF) VANDALIA VLA



CATEGORY	A	B	C	D
LNAV MDA	1100-1	478 (500-1)	1100-1¼ 478 (500-1¼)	NA
CIRCLING	1160-1	538 (600-1)	1160-1½ 538 (600-1½)	NA

EC-3, 25 FEB 2021 to 25 MAR 2021

EC-3, 25 FEB 2021 to 25 MAR 2021