

WAAS CH <b>48906</b> W04A	APP CRS <b>041°</b>	Rwy Idg TDZE Apt Elev	<b>6499</b> <b>159</b> <b>170</b>
---------------------------------	------------------------	-----------------------------	---

# RNAV (GPS) RWY 4

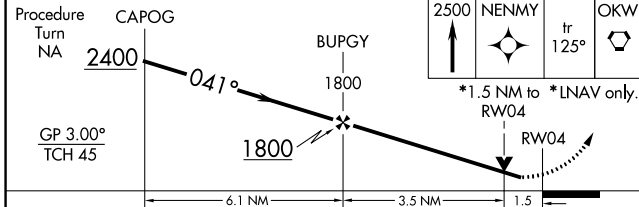
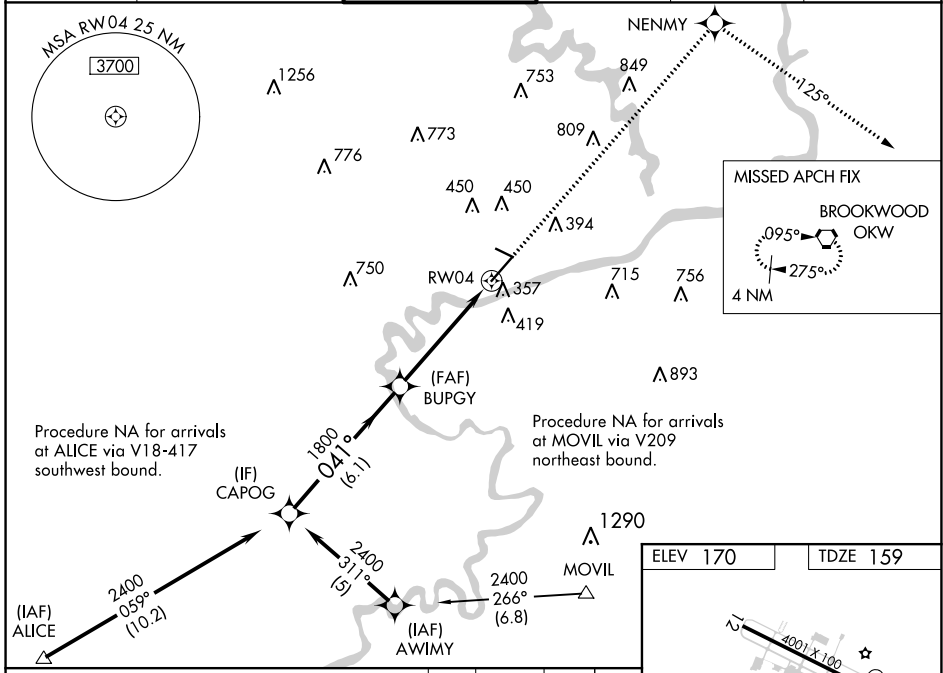
TUSCALOOSA NATIONAL (TCL)

**▼** For uncompensated Baro-VNAV systems, LNAV/VNAV NA below -15°C (5°F) or above 48°C (119°F). DME/DME RNP-0.3 NA. Helicopter visibility reduction below 3/4 SM NA. When local altimeter setting not received, use Birmingham altimeter setting and increase LPV and LNAV/VNAV DA 177 feet, all MDAs 180 feet, LPV all Cats visibility 1/4 mile, LNAV/VNAV all Cats visibility 3/4 mile, LNAV Cats C and D visibility 1/2 mile, Circling Cat B visibility 1/4 mile, and Cats C and D visibility 1/2 mile. VDP and Baro-VNAV NA when using Birmingham altimeter setting. For inop MALS, increase LNAV Cats A and B visibility 1/4 mile. For inop MALS, when using Birmingham altimeter setting; increase LPV all Cats visibility 1/2 mile, and LNAV Cat A and B visibility 1/4 mile. Night landing: Rwy 12, 30 NA.

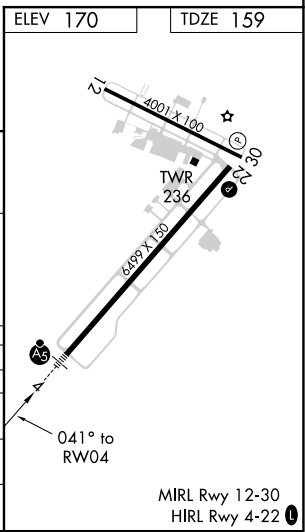
**MALS**

**MISSED APPROACH:**  
Climb to 2500 direct NENMY then on track 125° to OKW VORTAC and hold.

ASOS <b>132.825</b>	BIRMINGHAM APP CON <b>120.15 269.25</b>	TUSCALOOSA TOWER ★ <b>126.3</b> (CTAF) <b>256.7</b>	GND CON <b>121.8 257.95</b>	CLNC DEL <b>120.775</b>	UNICOM <b>122.95</b>
------------------------	--	--	--------------------------------	----------------------------	-------------------------



CATEGORY	A	B	C	D
LPV DA		409-3/4	250 (300-3/4)	
LNAV/ VNAV DA		608-1	449 (500-1)	
LNAV MDA	680-3/4	521 (600-3/4)	680-1	521 (600-1)
CIRCLING	720-1 550 (600-1)	800-1 630 (700-1)	800-1 3/4 630 (700-1 3/4)	800-2 630 (700-2)



SE-4, 25 FEB 2021 to 25 MAR 2021

SE-4, 25 FEB 2021 to 25 MAR 2021