

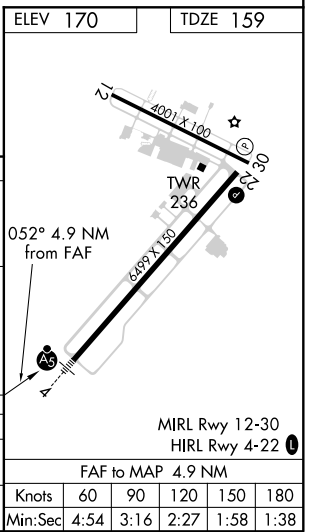
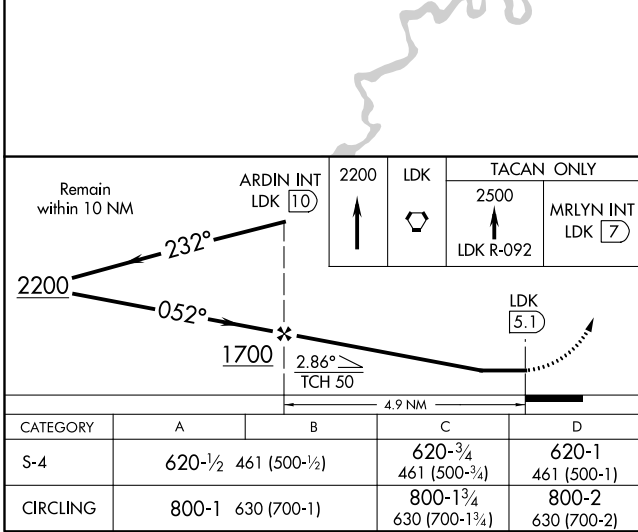
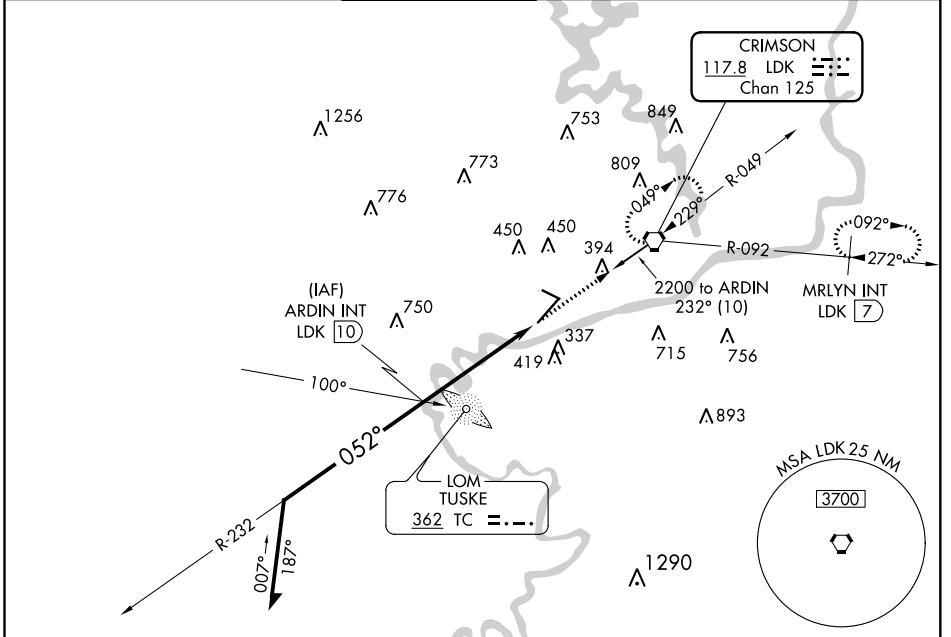
VORTAC LDK 117.8 Chan 125	APP CRS 052°	Rwy Idg TDZE 159 Apt Elev 170
---	------------------------	---

VOR or TACAN RWY 4

TUSCALOOSA NATIONAL (TCL)

 	DME or ADF required. Night landing: Rwy 12,30 NA.		MISSED APPROACH: Climb to 2200 direct LDK VORTAC and hold. (TACAN aircraft continue to 2500 via LDK R-092 to MRLYN INT/7 DME and hold E, right turns, 272° inbound.)
------	--	--	--

ASOS 132.825	BIRMINGHAM APP CON 120.15 269.25	TUSCALOOSA TOWER ★ 126.3 (CTAF) 0 256.7	GND CON 121.8 257.95	CLNC DEL 120.775	UNICOM 122.95
------------------------	--	--	--------------------------------	----------------------------	-------------------------



SE-4, 25 FEB 2021 to 25 MAR 2021

SE-4, 25 FEB 2021 to 25 MAR 2021

CATEGORY	A	B	C	D
S-4	620-1/2 461 (500-1/2)		620-3/4 461 (500-3/4)	620-1 461 (500-1)
CIRCLING	800-1 630 (700-1)		800-1 3/4 630 (700-1 3/4)	800-2 630 (700-2)

ELEV 170		TDZE 159	
Knots		60	90
Min:Sec		4:54	3:16
		120	150
		2:27	1:58
		180	1:38