

WAAS CH 49040 W26A	APP CRS 255°	Rwy Idg TDZE 186 Apt Elev 193	3438
--	------------------------	---	-------------

RNAV (GPS) RWY 26

TRACY MUNI (TCY)

RNP APCH.

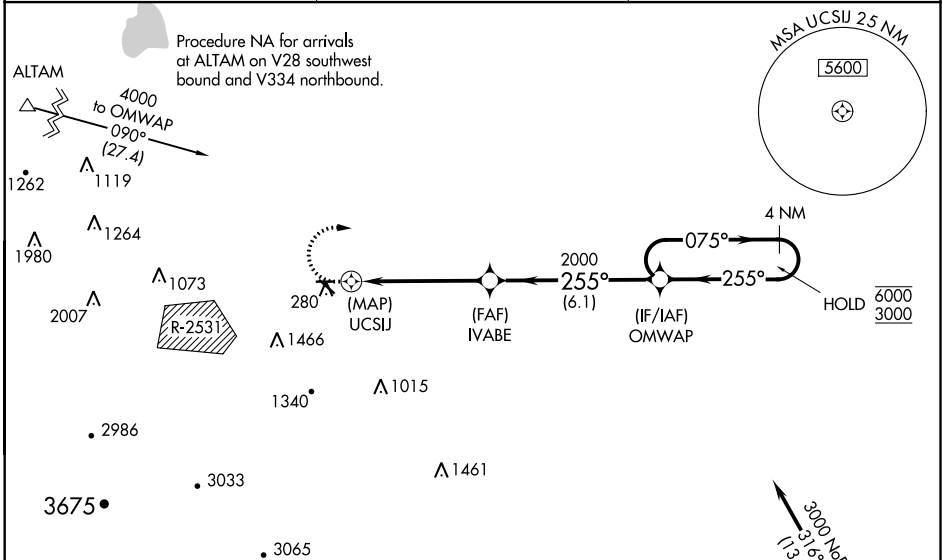
Baro-VNAV NA when using Stockton altimeter setting. For uncompensated Baro-VNAV systems, LNAV/VNAV NA below -15°C or above 54°C. Circling NA southwest of Rwy 12-30. Circling Rwy 30 NA at night. Rwy 26 helicopter visibility reduction below ¾ SM NA. When local altimeter setting not received, use Stockton altimeter setting: increase LPV DA to 496 feet, increase LNAV/VNAV DA to 553 feet; increase all MDAs 60 feet and visibility LNAV Cat C ½ SM.

MISSED APPROACH: (Do not exceed 210K until OMWAP) Climb to 640 then climbing right turn to 3000 direct OMWAP and hold.

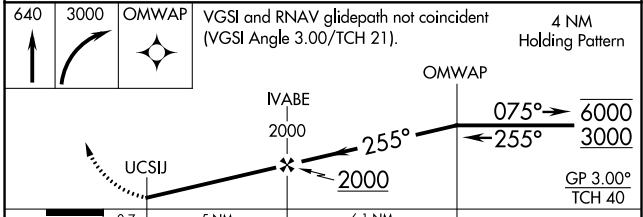
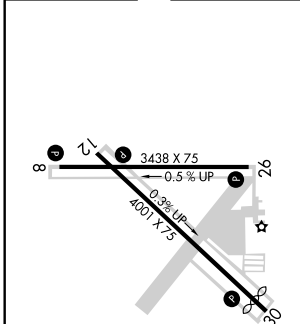
AWOS-3
118.375

NORCAL APP CON
123.85 278.3

UNICOM
123.075 (CTAF) 0



ELEV 193 | TDZE 186



CATEGORY	A	B	C	D
LPV DA	436-7/8	250 (300-7/8)		NA
LNAV/VNAV DA	493-11/8	307 (300-11/8)		NA
LNAV MDA	540-1	354 (400-1)		NA
C CIRCLING	580-1 387 (400-1)	660-1 467 (500-1)	660-1½ 467 (500-1½)	NA

MIRL Rwy 8-26 and 12-30 0
REIL Rwy 8, 12, 26 and 30 0

SW-2, 25 FEB 2021 to 25 MAR 2021