

WAAS CH 86512 W06A	APP CRS 060°	Rwy Idg 5702 TDZE 604 Apt Elev 609
--	------------------------	---

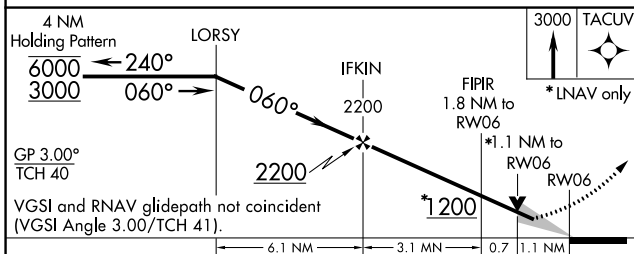
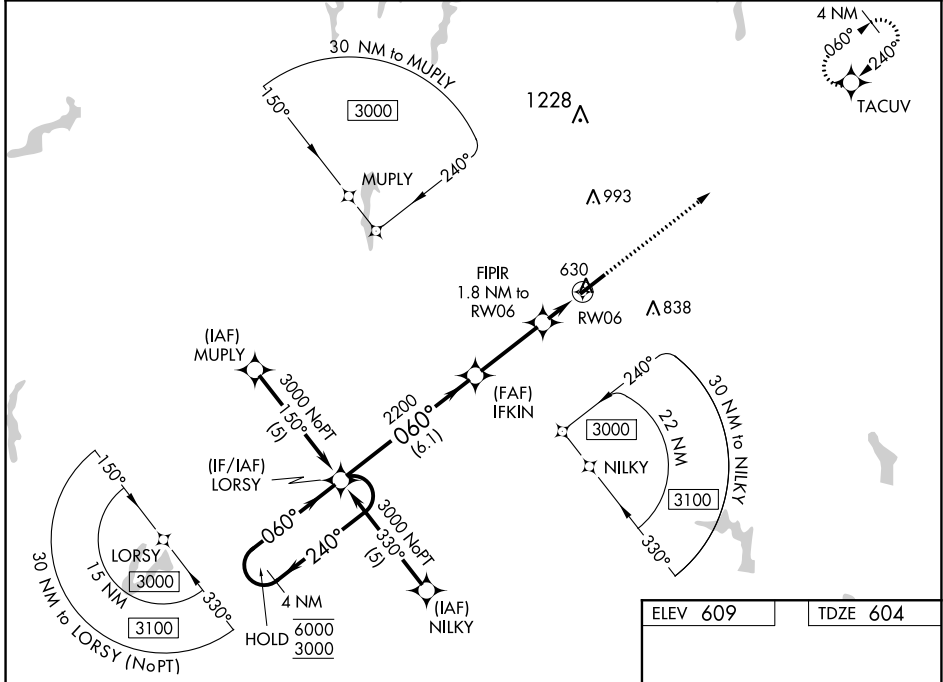
RNAV (GPS) RWY 6

RALEIGH RGNL AT PERSON COUNTY (TDF)

RNP APCH
 ▼ Baro-VNAV and VDP NA when using Danville altimeter setting. For uncompensated Baro-VNAV systems, LNAV/VNAV NA below -16°C or above 54°C. When local altimeter setting not received, use Danville altimeter setting and increase all LPV DA to 916, LNAV/VNAV DA to 1150 and all MDA 80 feet, increase LNAV Cat C visibility to 7/8 SM. For inop ALS, increase LNAV/VNAV all Cats visibility to 1 1/8 SM and LNAV Cat C visibility to 1 SM. For inop ALS, when using Danville altimeter setting, increase LPV all Cats visibility to 7/8 SM, LNAV/VNAV all Cats visibility to 1 1/8 SM, and LNAV Cat D visibility to 1 3/8 SM.

MALSR
 MISSED APPROACH:
 Climb to 3000 direct TACUV and hold.

AWOS-3 126.725	RALEIGH APP CON 132.35 256.9	GCO 119.7	UNICOM 122.7 (CTAF)
--------------------------	--	---------------------	-------------------------------



ELEV 609	TDZE 604
MIRL Rwy 6-24	

CATEGORY	A	B	C	D
LPV DA		854-1/2	250 (300-1/2)	
LNAV/VNAV DA		1090-1 1/4	486 (500-1 1/4)	
LNAV MDA	980-1/2	376 (400-1/2)	980-5/8 376 (400-5/8)	980-1 376 (400-1)
CIRCLING	1080-1	471 (500-1)	1080-1 1/2 471 (500-1 1/2)	1160-2 551 (600-2)

SE-2, 25 FEB 2021 to 25 MAR 2021

SE-2, 25 FEB 2021 to 25 MAR 2021