

# RNAV (GPS) X RWY 6

TETERBORO (TEB)

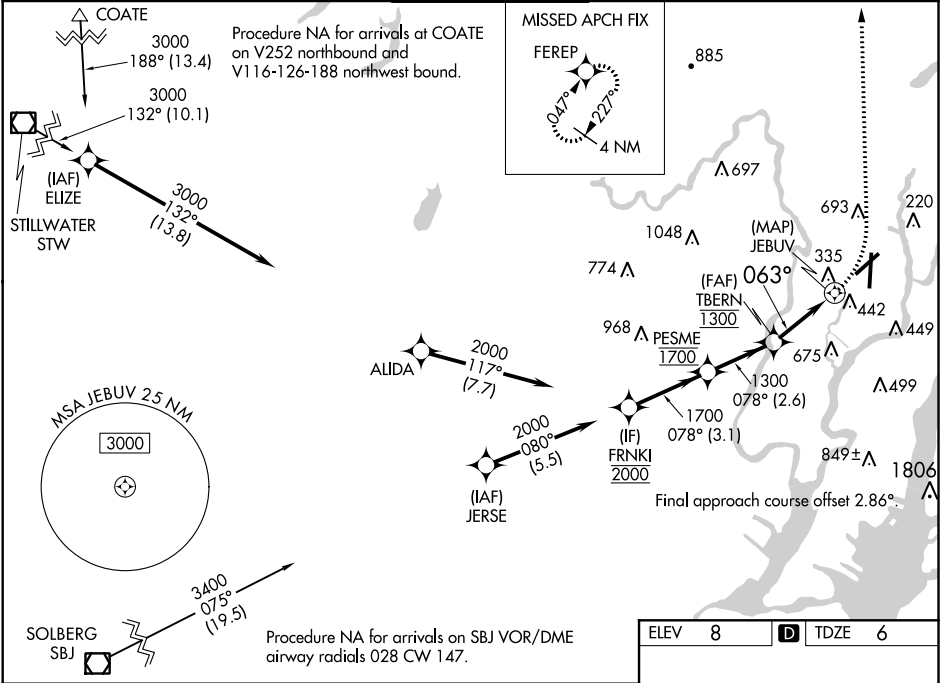
WAAS CH <b>65634</b> <b>W06B</b>	APP CRS <b>063°</b>	Rwy Idg TDZE Apt Elev	<b>6013</b> <b>6</b> <b>8</b>
--	------------------------	-----------------------------	-------------------------------------

RNP APCH.		TETERBORO TOWER		GND CON	CLNC DEL	CPDLC
114.2 132.85		127.6 379.9		119.5	121.9	128.05

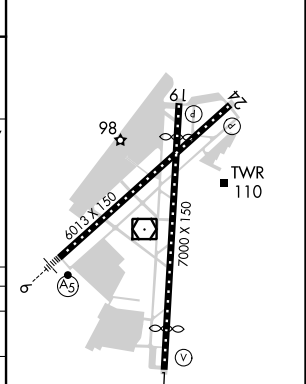
For uncompensated Baro-VNAV systems, LNAV/VNAV NA below -13°C (9°F) or above 54°C (130°F). Circling NA for Cats B, C and D NW of Rwy 6 and 19. For inop ALS, increase LPV all Cats visibility to 1 1/2 SM, LNAV/VNAV all Cats visibility to 2 1/2 SM, and LNAV Cats A/B visibility to 1 1/4 SM. When Circling to Rwy 24 at night, operational VGSI required, remain on or above VGSI glidepath until threshold.



MISSED APPROACH:  
Climbing left turn to 2000 direct FERE P and hold.



ELEV 8	<b>D</b> TDZE 6
--------	-----------------



FRNKI	2000	PESME	TBERN	JEBUV	2000	FERE P
	078°				1700	1300
GP 3.00° TCH 55	3.1 NM	2.6 NM	2 NM	0.8	1.1	
CATEGORY	A	B	C	D		
LPV DA		459/55	453 (500-1)			
LNAV/VNAV DA		672-1 7/8	666 (700-1 7/8)			
LNAV MDA	660/45	654 (700- 7/8)	660-1 3/8	654 (700-1 3/8)		
<b>C</b> CIRCLING	760-1 1/4	752 (800-1 1/4)	820-2 1/2 812 (900-2 1/2)	1040-3 1032 (1100-3)		

TDZ/CL Rwy 6 and 19  
HIRL Rwy 1-19 and 6-24  
REIL Rwy 1, 6, 19 and 24

NE-2, 25 FEB 2021 to 25 MAR 2021

NE-2, 25 FEB 2021 to 25 MAR 2021