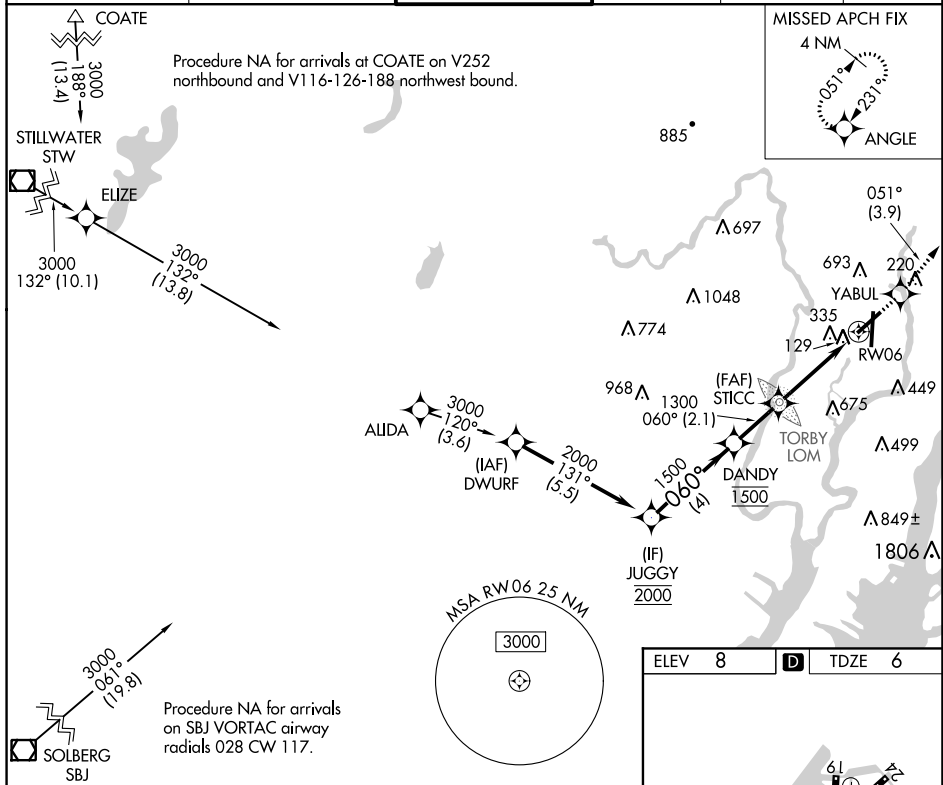


WAAS CH <b>65707</b> <b>W06A</b>	APP CRS <b>060°</b>	Rwy Idg TDZE Apt Elev	<b>6013</b> <b>6</b> <b>8</b>
----------------------------------------	------------------------	-----------------------------	-------------------------------------

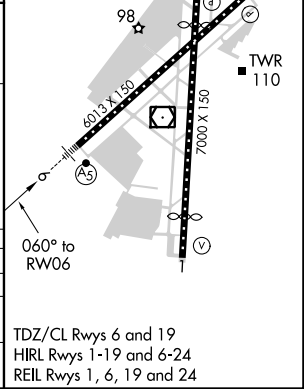
# RNAV (GPS) Y RWY 6

TETERBORO (TEB)

RNP APCH.		MALSRL	MISSED APPROACH: Climb to 2000 direct YABUL and on track 051° to ANGLE and hold.		
<p>⚠ Circling NA for Cats B, C, and D NW of Rws 6 and 19. When Circling to Rwy 24 at night, operational VGSI required, remain on or above VGSI glidepath until threshold.</p>					
D-ATIS	NEW YORK APP CON	TETERBORO TOWER	GND CON	CLNC DEL	CPDLC
<b>114.2 132.85</b>	<b>127.6 379.9</b>	<b>119.5</b>	<b>121.9</b>	<b>128.05</b>	



JUGGY	DANDY	STICC	*LNAV only.	
2000	1500	1300	2000	ANGLE
GP 3.00° TCH 53		*2.3 NM to RW06	↑	tr 051°
<p>4 NM    2.1 NM    1.6 NM    2.3 NM</p>				
CATEGORY	A	B	C	D
LPV DA	369/40 363 (400-¾)			
LNAV MDA	800/40	794 (800-¾)	800-1¾ 794 (800-1¾)	800-2 794 (800-2)
CIRCLING	800-1 792 (800-1)	800-1¼ 792 (800-1¼)	820-2½ 812 (900-2½)	1040-3 1032 (1100-3)



NE-2, 25 FEB 2021 to 25 MAR 2021

NE-2, 25 FEB 2021 to 25 MAR 2021