

VOR/DME TEB	APP CRS	Rwy Idg	<b>6013</b>
<b>108.4</b>	<b>231°</b>	TDZE	<b>8</b>
Chan 21		Apt Elev	<b>8</b>

# VOR RWY 24

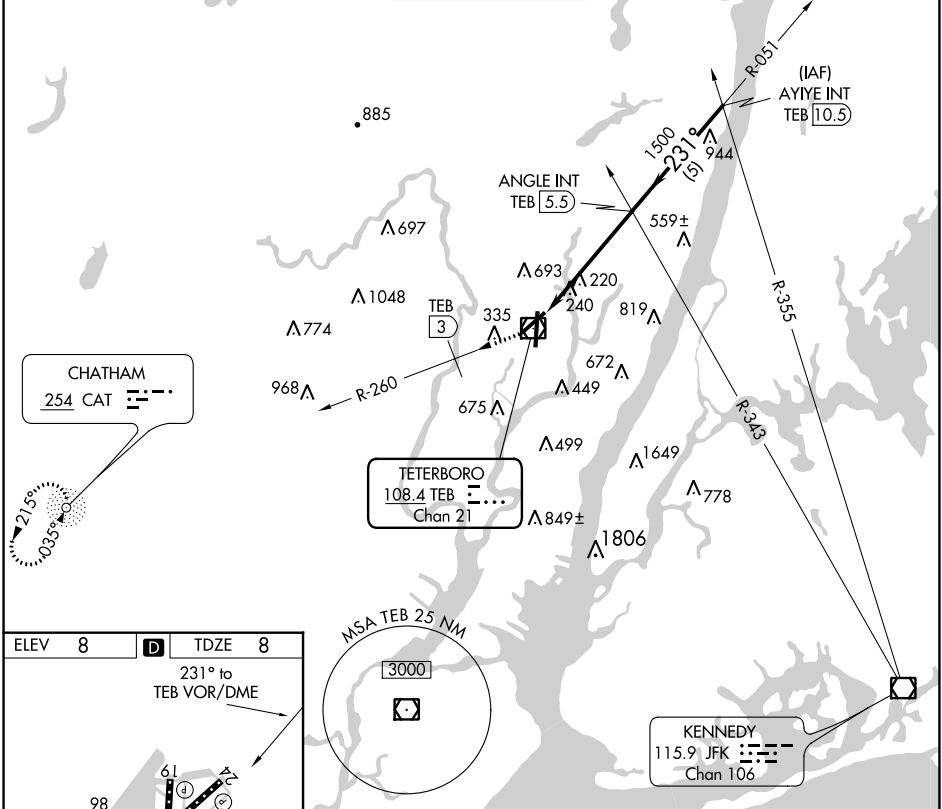
TETERBORO (TEB)

DME and RADAR required for procedure entry. DME required. ADF and DME required for missed approach.

- ⚠** Circling NA for Cats B, C and D NW of Rwy 6 and 19. Rwy 24 helicopter visibility reduction below 1 SM NA. Straight-in Rwy 24, Circling Rwy 24 at night, operational VGSI required, remain on or above VGSI glidepath until threshold.

**MISSED APPROACH:** Climbing right turn to 1500 on TEB R-260 to 3 DME then climb to 2000 direct CAT NDB and hold.

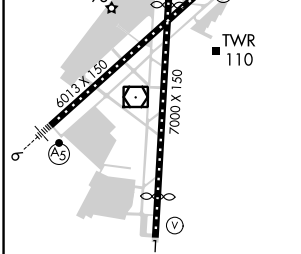
D-ATIS	NEW YORK APP CON	TETERBORO TOWER	GND CON	CLNC DEL	CPDLC
<b>114.2 132.85</b>	<b>127.6 379.9</b>	<b>119.5</b>	<b>121.9</b>	<b>128.05</b>	



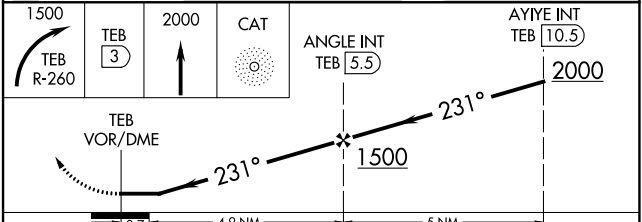
NE-2, 25 FEB 2021 to 25 MAR 2021

NE-2, 25 FEB 2021 to 25 MAR 2021

ELEV 8	<b>D</b>	TDZE 8
231° to TEB VOR/DME		



TDZ/CL Rwy 6 and 19  
HIRL Rwy 1-19 and 6-24  
REIL Rwy 1, 6, 19 and 24



CATEGORY	A	B	C	D
S-24	540-1	532 (600-1)	540-1½ 532 (600-1½)	540-1¾ 532 (600-1¾)
<b>C</b> CIRCLING	760-1 752 (800-1)	1000-1½ 992 (1000-1½)	1000-3 992 (1000-3)	1040-3 1032 (1100-3)

TETERBORO, NEW JERSEY  
Orig-F 20JUN19

40°51'N - 74°04'W

# TETERBORO (TEB) VOR RWY 24