


VOR/DME TEB	APP CRS	Rwy Idg	<b>6013</b>
<b>108.4</b>	<b>064°</b>	TDZE	<b>6</b>
Chan <b>21</b>		Apt Elev	<b>8</b>

# VOR/DME RWY 6

TETERBORO (TEB)

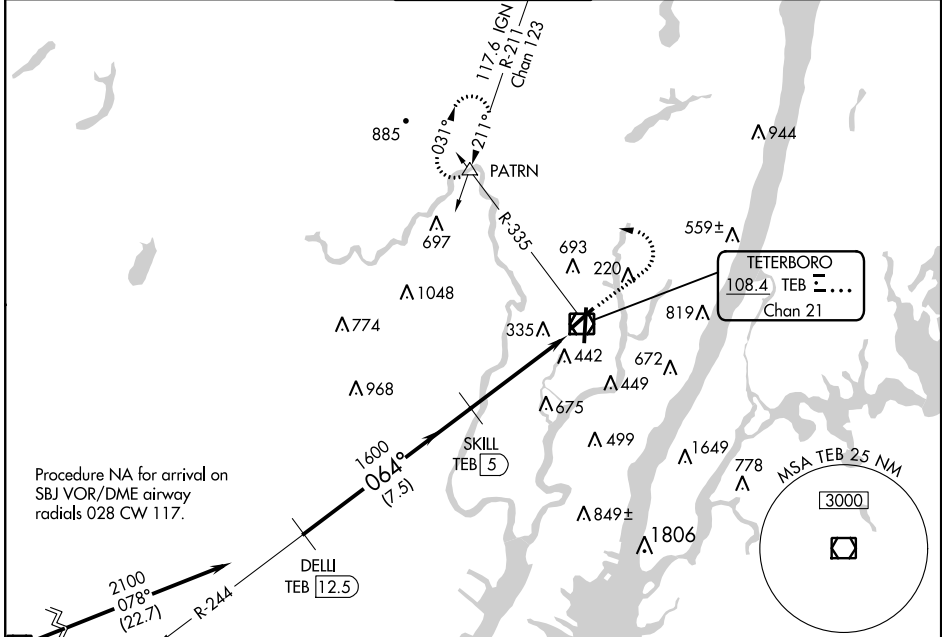
DME required for procedure.

**⚠** Inoperative table does not apply to S-6 Cats A and B. Circling NA for Cats B, C, and D NW of Rwy 6 and 19. When Circling to Rwy 24 at night, operational VGSI required, remain on or above VGSI glidepath until threshold.

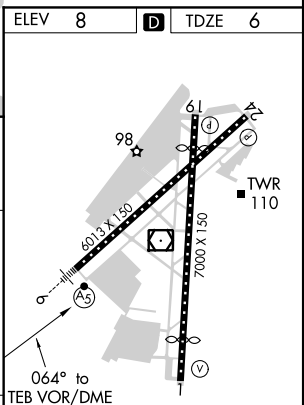
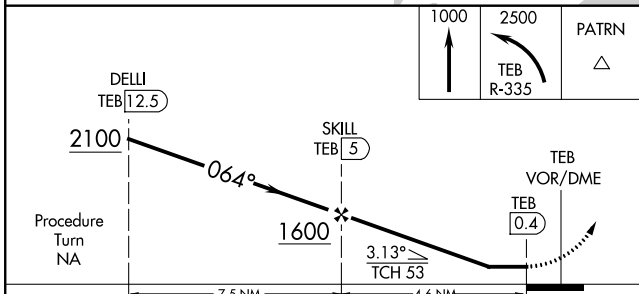
MALSR 

MISSED APPROACH: Climb to 1000, then climbing left turn to 2500 on TEB R-335 to PATRN INT and hold.

D-ATIS	NEW YORK APP CON	TETERBORO TOWER	GND CON	CLNC DEL	CPDLC
<b>114.2 132.85</b>	<b>127.6 379.9</b>	<b>119.5</b>	<b>121.9</b>	<b>128.05</b>	



ELEV	<b>8</b>	<b>D</b>	TDZE	<b>6</b>
------	----------	----------	------	----------



CATEGORY	A	B	C	D
S-6	700/50 694 (700-1)	700-1½ 694 (700-1½)	700-1¾ 694 (700-1¾)	700-1¾ 694 (700-1¾)
<b>C</b> CIRCLING	760-1 751 (800-1)	760-1¼ 751 (800-1¼)	820-2½ 812 (900-2½)	1040-3 1032 (1100-3)

TDZ/CL Rwy 6 and 19  
HIRL Rwy 1-19 and 6-24  
REIL Rwy 1, 6, 19 and 24

NE-2, 25 FEB 2021 to 25 MAR 2021

NE-2, 25 FEB 2021 to 25 MAR 2021