

VOR/DME TEB 108.4 Chan 21	APP CRS 202°	Rwy Idg TDZE Apt Elev	N/A N/A 8
--	------------------------	--------------------------	--------------------------------------

VOR/DME-B

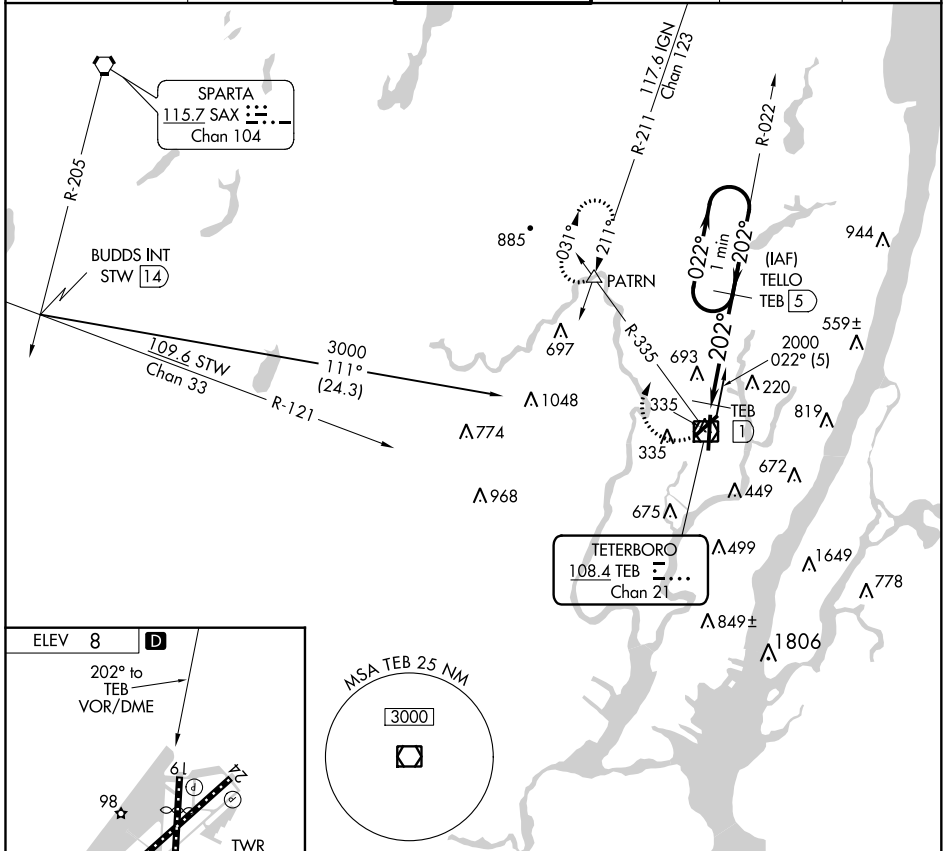
TETERBORO (TEB)

▼ Circling NA for Cats B, C and D NW of Rwy 6 and 19. When Circling to Rwy 24 at night, operational VGSI required, remain on or above VGSI glidepath until threshold.

▲

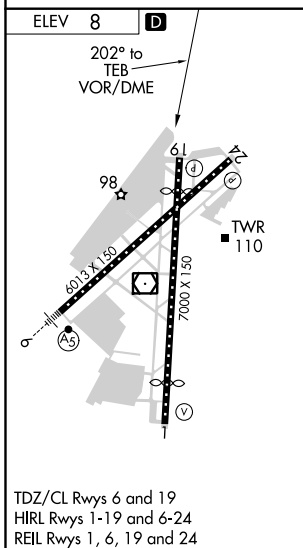
MISSED APPROACH:
Climbing right turn to 2500 on TEB R-335 to PATRN INT and hold.

D-ATIS 114.2 132.85	NEW YORK APP CON 127.6 379.9	TETERBORO TOWER 119.5	GND CON 121.9	CLNC DEL 128.05	CPDLC
-------------------------------	--	---------------------------------	-------------------------	---------------------------	-------



NE-2, 25 FEB 2021 to 25 MAR 2021

NE-2, 25 FEB 2021 to 25 MAR 2021



2500	PATRN	One Minute Holding Pattern		
TEB R-335	▲			
CATEGORY	A	B	C	D
☐ CIRCLING	800-1 792 (800-1)	800-1¼ 792 (800-1¼)	820-2½ 812 (900-2½)	1040-3 1032 (1100-3)