

WAAS Ch 78301 W13A	APP CRS 133°	Rwy Idg 5000 TDZE 18 Apt Elev 18
--	------------------------	---

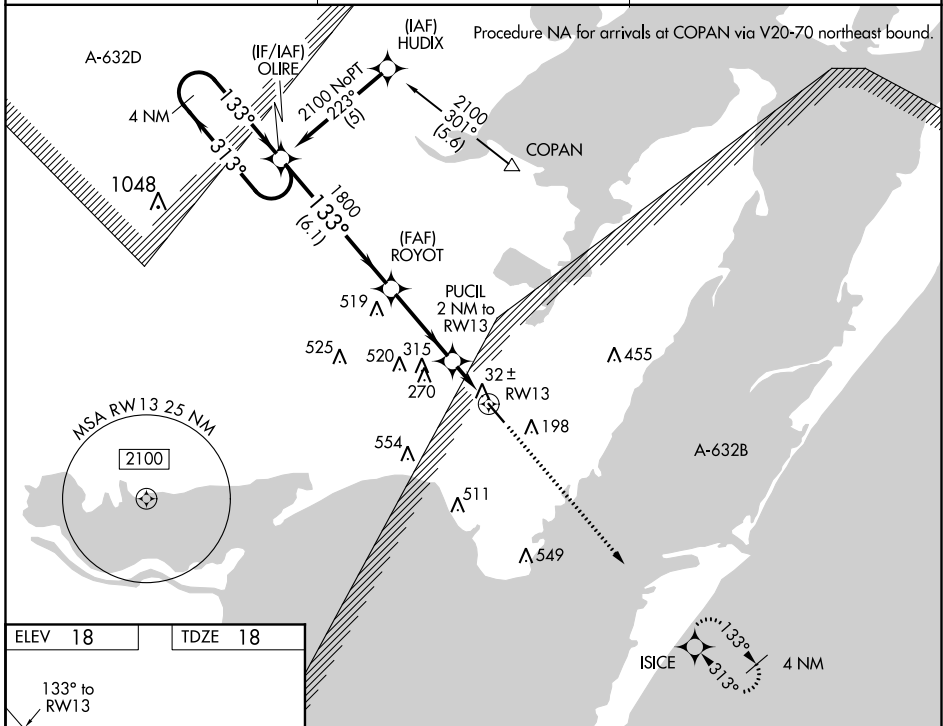
RNAV (GPS) RWY 13

MCCAMPBELL-PORTER (TFP)

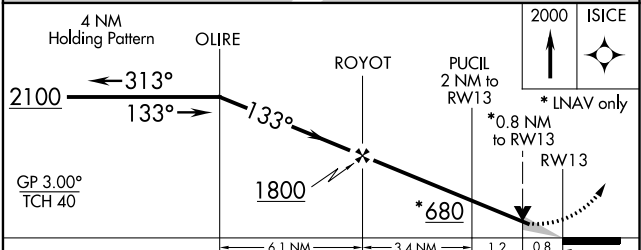
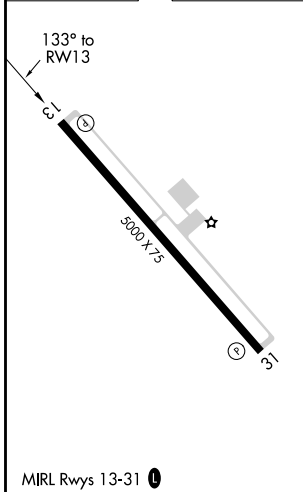
⚠ Baro-VNAV NA when using Mustang Beach altimeter setting. DME/DME RNP-0.3 NA. For uncompensated Baro-VNAV systems, LNAV/VNAV NA below -15°C (5°F) or above 49°C (120°F). When local altimeter setting not received, use Mustang Beach altimeter setting and increase LPV DA to 291 feet; LNAV/VNAV DA to 309 feet; and all MDAs 40 feet. VDP NA when using Mustang Beach altimeter setting.

MISSED APPROACH:
Climb to 2000 direct ISICE and hold.

AWOS-3 118.775	CORPUS APP CON 120.9 348.725	UNICOM 122.7 (CTAF) 0
--------------------------	--	---------------------------------



ELEV 18	TDZE 18
---------	---------



CATEGORY	A	B	C	D
LPV DA		268-1	250 (300-1)	
LNAV/VNAV DA		286-1	268 (300-1)	
LNAV MDA		300-1	282 (300-1)	
CIRCLING	520-1	502 (600-1)	520-1½ 502 (600-1½)	580-2 562 (600-2)

SC-3, 25 FEB 2021 to 25 MAR 2021

SC-3, 25 FEB 2021 to 25 MAR 2021