

WAAS Ch <b>82601</b> <b>W31A</b>	APP CRS <b>313°</b>	Rwy Idg <b>5000</b> TDZE <b>18</b> Apt Elev <b>18</b>
--	------------------------	---

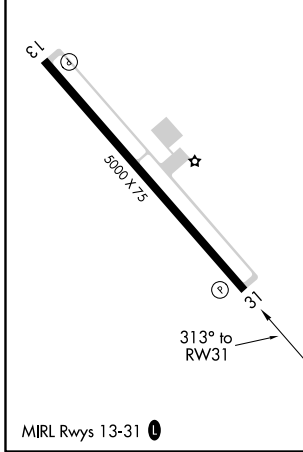
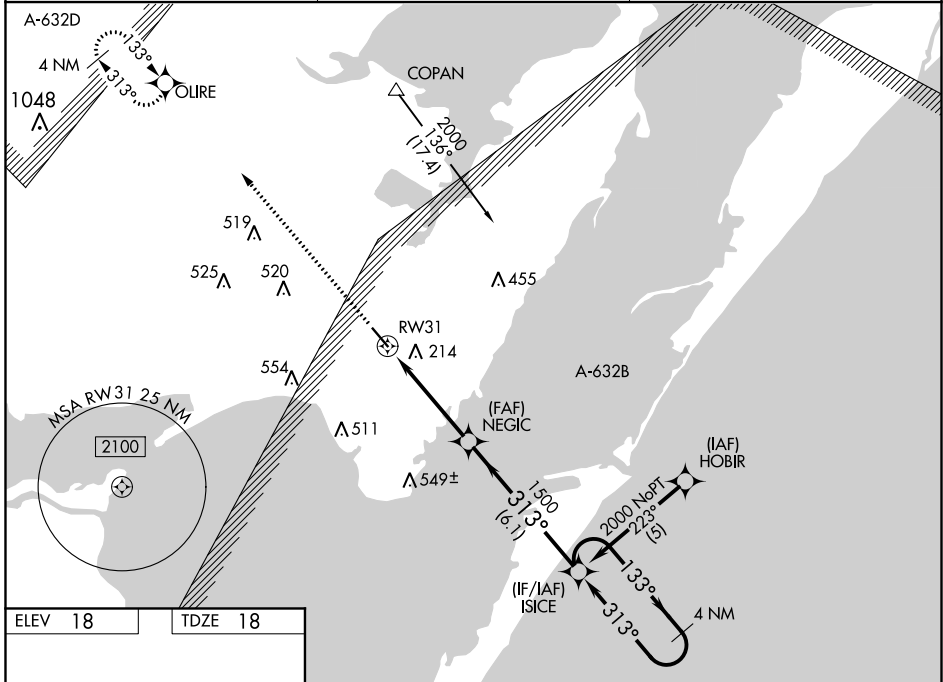
# RNAV (GPS) RWY 31

MCCAMPBELL-PORTER (TFP)

**⚠** BARO-VNAV NA when using Mustang Beach altimeter setting. For uncompensated BARO-VNAV systems, LNAV/VNAV NA below -15°C (5°F) or above 48°C (118°F).  
**⚠** When local altimeter setting not received, use Mustang Beach altimeter setting and increase LPV DA to 291 feet; LNAV/VNAV DA to 533 feet; and all MDAs 40 feet; increase LNAV Cat C visibility ¼ mile. VDP NA when using Mustang Beach altimeter setting. DME/DME RNP-0.3 NA.

**MISSED APPROACH:**  
Climb to 2100 direct OLIRE and hold.

AWOS-3 <b>118.775</b>	CORPUS APP CON <b>120.9 348.725</b>	UNICOM <b>122.7 (CTAF) 0</b>
--------------------------	--	---------------------------------



2100 OLIRE	VGSIs and descent angles not coincident (VGSIs Angle 3.00/TCH 33).			ISICE	4 NM Holding Pattern
*LNAV only	*1.3 NM to RW31		NEGIC	ISICE	2000
RW31	1.3 NM	3.1 NM	6.1 NM	1500	GP 3.00° TCH 40
CATEGORY	A	B	C	D	
LPV DA	268-1		250 (300-1)		
LNAV/VNAV DA	510-1¾ 492 (500-1¾)				
LNAV MDA	480-1	462 (500-1)	480-1½ 462 (500-1½)	480-1½ 462 (500-1½)	
CIRCLING	520-1	502 (600-1)	520-1½ 502 (600-1½)	580-2 562 (600-2)	

SC-3, 25 FEB 2021 to 25 MAR 2021

SC-3, 25 FEB 2021 to 25 MAR 2021