

|  |                        |   |
|--|------------------------|---|
| WAAS<br>CH <b>69538</b><br><b>W01A</b> | APP CRS<br><b>011°</b> | Rwy Idg <b>4802</b><br>TDZE <b>358</b><br>Apt Elev <b>358</b> |
|--|------------------------|---|

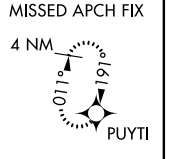
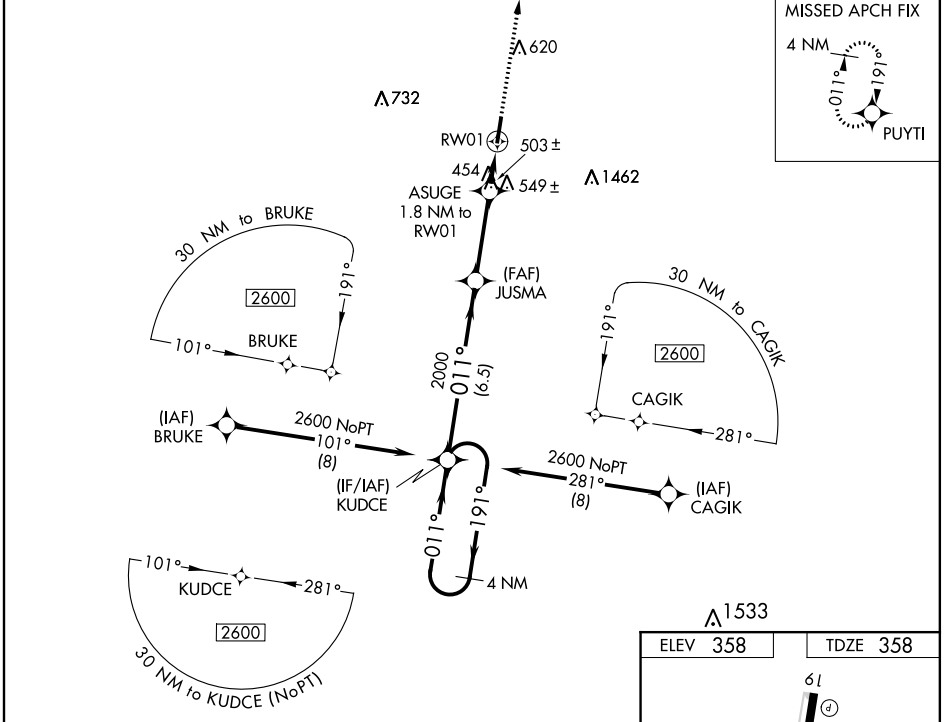
# RNAV (GPS) RWY 1

GIBSON COUNTY (TGC)

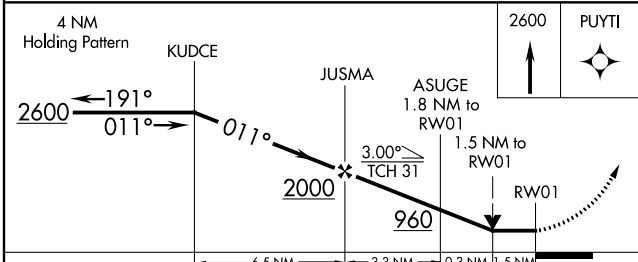
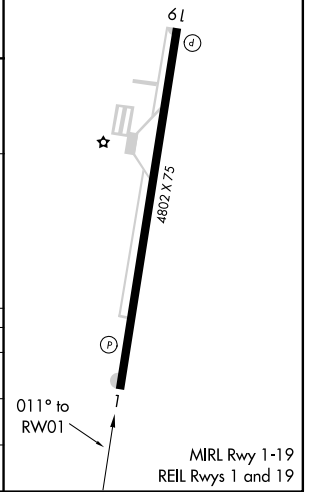
**▽** NA Night landing: Rwy 19 NA. DME/DME RNP-0.3 NA. Helicopter visibility reduction below 3/4 SM NA. Obtain local altimeter setting on CTAF; when not received use McKellar-Sipes Rgnl altimeter setting and increase all MDA 60 feet, increase Circling Cat C visibility 1/4 mile.

**▲** MISSED APPROACH: Climb to 2600 direct PUYTI and hold.

MEMPHIS CENTER **134.65 316.15** UNICOM **122.8** (CTAF)



|                 |                 |
|-----------------|-----------------|
| ELEV <b>358</b> | TDZE <b>358</b> |
|-----------------|-----------------|



|                   |                   |                           |                      |   |
|-------------------|-------------------|---------------------------|----------------------|---|
| CATEGORY          | A                 | B                         | C                    | D |
| LP MDA            | 720-1 362 (400-1) |                           |                      |   |
| LNAV MDA          | 800-1 442 (500-1) | 800-1 3/4 442 (500-1 3/4) |                      |   |
| <b>C</b> CIRCLING | 980-1 622 (700-1) | 980-1 3/4 622 (700-1 3/4) | 1780-3 1422 (1500-3) |   |

SE-1, 25 FEB 2021 to 25 MAR 2021

SE-1, 25 FEB 2021 to 25 MAR 2021