

WAAS CH 69218 W11A	APP CRS 110°	Rwy Idg TDZE Apt Elev	4400 2925 2925
--	------------------------	-----------------------------	---

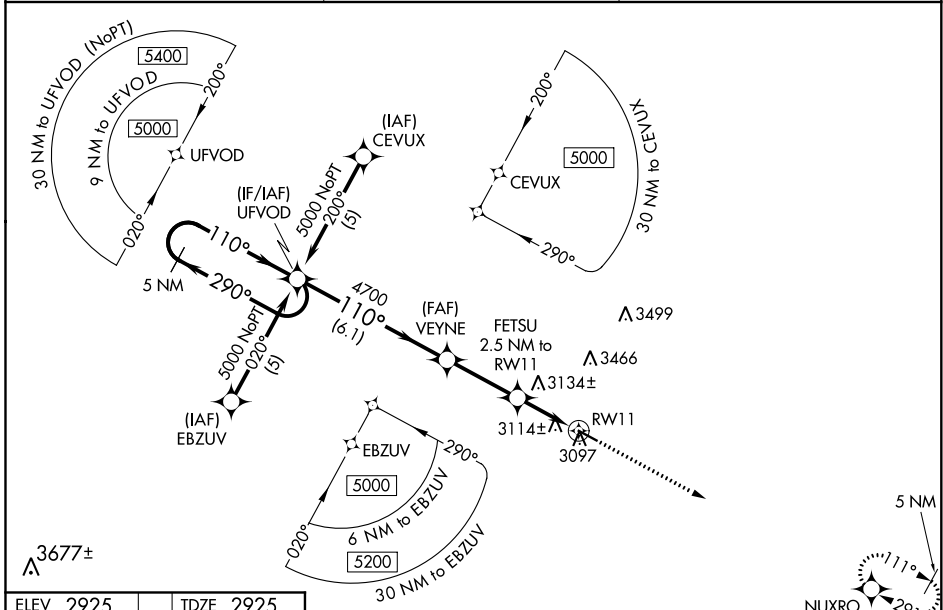
RNAV (GPS) RWY 11

THOMAS COUNTY (TIF)

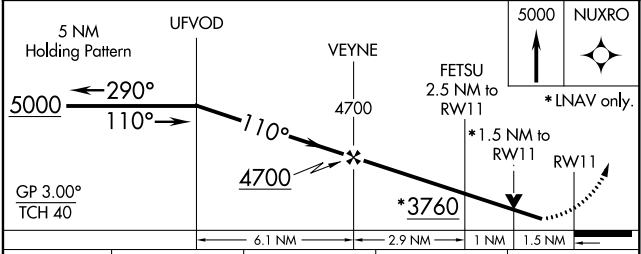
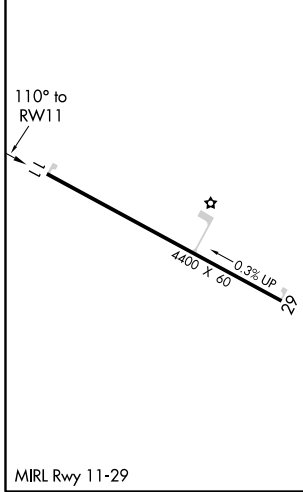
⚠ Baro-VNAV NA when using North Platte altimeter setting. For uncompensated Baro-VNAV systems, LNAV/VNAV NA below -20°C (-4°F) or above 54°C (130°F). DME/DME RNP-0.3 NA. Visibility reduction by helicopters NA. When local altimeter setting not received use North Platte altimeter setting and increase all DA 137 feet and all MDA 140 feet, increase LPV and LNAV/VNAV Cats A and B visibility ½ mile. VDP NA with North Platte altimeter setting.

MISSED APPROACH: Climb to 5000 direct NUXRO and hold.

AWOS-3 120.825	DENVER CENTER 127.95 338.2	CTAF 122.9
--------------------------	--------------------------------------	----------------------



ELEV 2925	TDZE 2925
-----------	-----------



CATEGORY	A	B	C	D
LPV DA	3175-1	250 (300-1)		NA
LNAV/VNAV DA	3490-2	565 (600-2)		NA
LNAV MDA	3440-1	515 (600-1)		NA
CIRCLING	3480-1	555 (600-1)		NA

NC-2, 25 FEB 2021 to 25 MAR 2021

NC-2, 25 FEB 2021 to 25 MAR 2021