

SC-2, 25 FEB 2021 to 25 MAR 2021

CLNC DEL (when twr closed)
121.35
GND CON
121.875
MC KINNEY TOWER *
118.825 (CTAF)
REGIONAL DEP CON
124.3 282.275

TAKEOFF MINIMUMS
Rwys 18, 36: Standard.

NOTE: SOLDI TRANSITION: ATC assigned.
NOTE: RADAR required.
NOTE: DME required.

MAVERICK
113.1 TTT
Chan 78
N32°52.15'-W97°02.43'

BONHAM
114.6 BVP
Chan 93

PARIS
113.6 PRX
Chan 83
N33°32.54'-W95°26.90'

TEXARKANA
116.3 TKX
Chan 110
N33°30.83'-W94°04.39'

NOBLY
N33°04.94'
W96°19.96'

TRISS
N32°58.20'
W96°19.94'

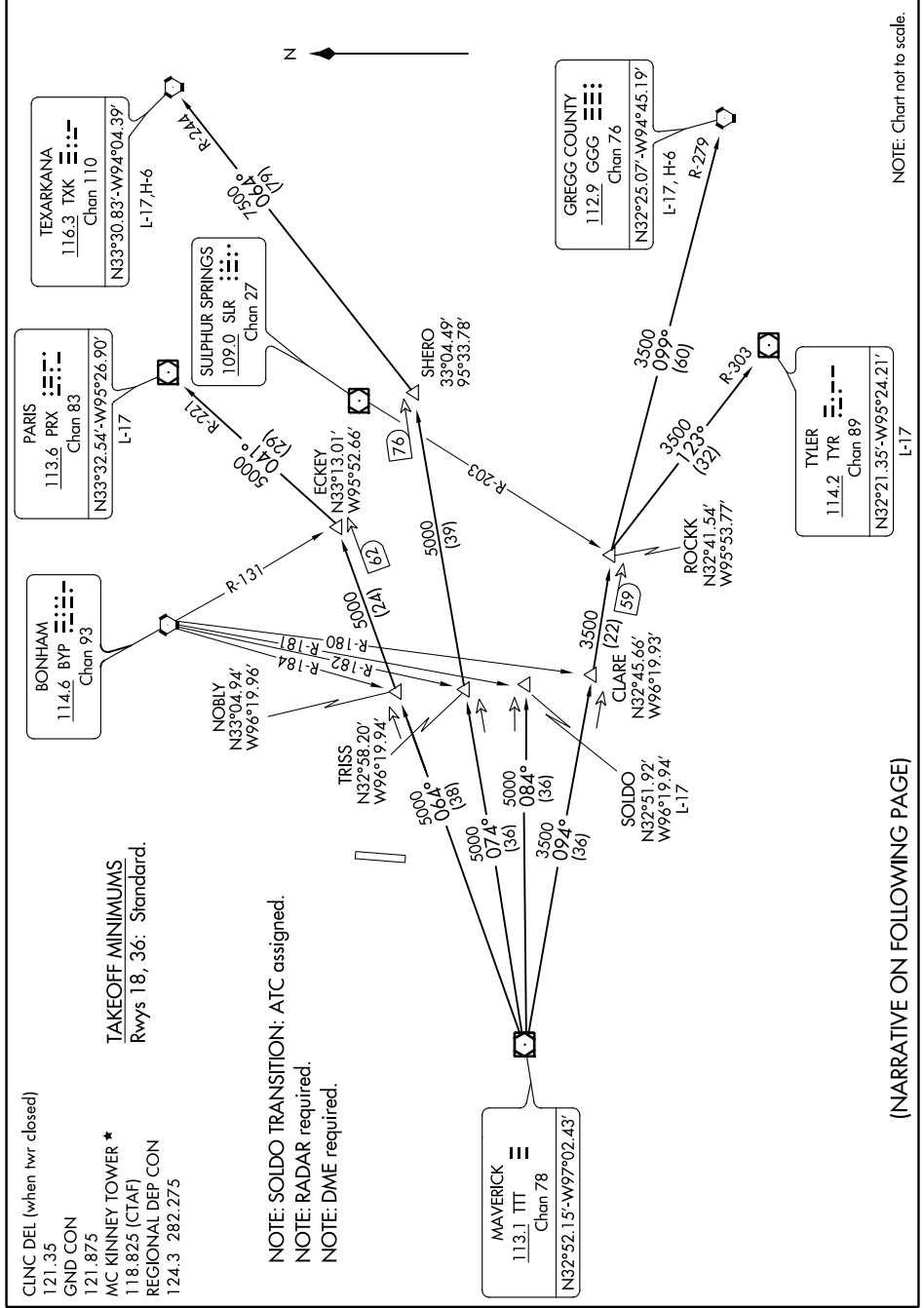
SULPHUR SPRINGS
109.0 SILR
Chan 27

ECKEY
N33°13.01'
W95°52.66'

SHERO
33°04.49'
95°53.78'

GREGG COUNTY
112.9 GGG
Chan 76
N32°25.07'-W94°45.19'

TYLER
114.2 TYR
Chan 89
N32°21.35'-W95°24.21'



NOTE: Chart not to scale.

(NARRATIVE ON FOLLOWING PAGE)

SC-2, 25 FEB 2021 to 25 MAR 2021