

WAAS CH 49202 W36A	APP CRS 359°	Rwy Idg TDZE Apt Elev	7002 589 589
--	------------------------	-----------------------------	---

RNAV (GPS) RWY 36

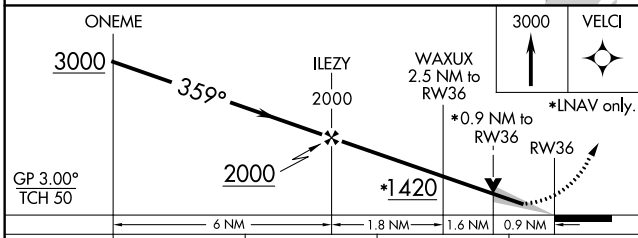
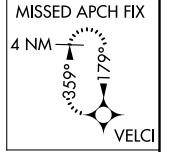
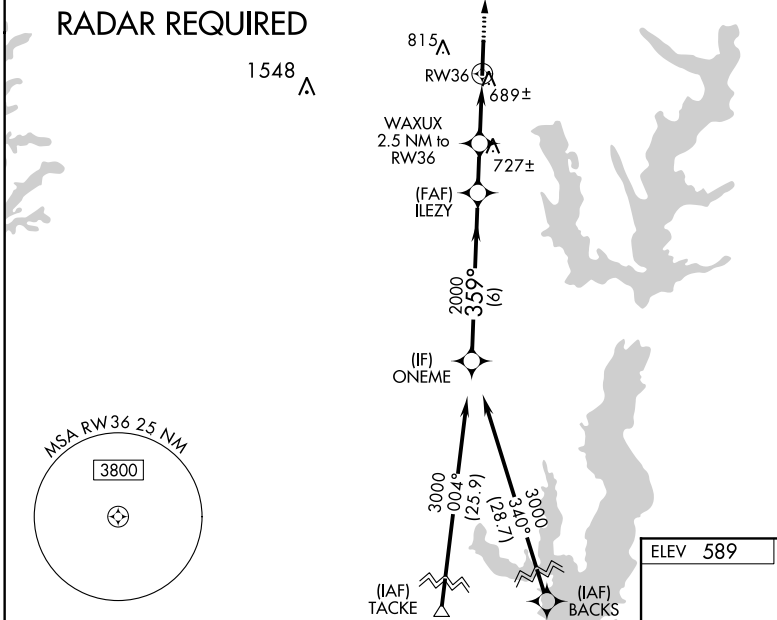
MCKINNEY NATIONAL (TKI)

⚠ For uncompensated Baro-VNAV systems, LNAV/VNAV NA below -8°C (18°F) or above 54°C (130°F). When local altimeter setting not received, use Dallas Love Field altimeter setting and increase all DA 70 feet and all MDA 80 feet, and increase LNAV/VNAV all Cats visibility ½ mile, LNAV Cat C/D and Circling Cat C/D visibility ¼ mile. DME/DME RNP-0.3 NA. VDP and Baro-VNAV NA when using Dallas Love Field altimeter setting. For inop MALS increase LNAV/VNAV all Cats visibility to ¾ mile and LNAV Cat D visibility to 1 mile. For inop MALS when using Dallas Love Field altimeter setting increase LPV all Cats visibility to ¾ mile, LNAV/VNAV Cat D visibility to 1½ mile, and LNAV Cat D visibility to 1¼ mile. Inop table does not apply to LPV all Cats.

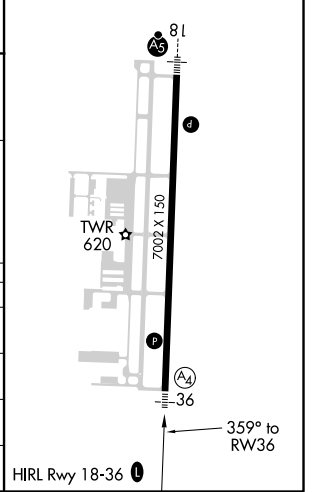
MALS
Ⓜ₄ =

MISSED APPROACH:
Climb to 3000 direct
VELCI and hold.

ASOS 119.925	REGIONAL APP CON 124.3 282.275	MC KINNEY TOWER ★ 118.825 (CTAF) 0	GND CON 121.875	CINC DEL 121.35 (When twr closed)	UNICOM 122.95
------------------------	--	---	---------------------------	--	-------------------------



ELEV 589	TDZE 589
----------	----------



CATEGORY	A	B	C	D
LPV DA		789-¾	200 (200-¾)	
LNAV/VNAV DA		850-¾	261 (300-¾)	
LNAV MDA		940-¾	351 (400-¾)	
C CIRCLING	1120-1	531 (600-1)	1200-1¼ 611 (700-1¾)	1380-2½ 791 (800-2½)

SC-2, 25 FEB 2021 to 25 MAR 2021

SC-2, 25 FEB 2021 to 25 MAR 2021