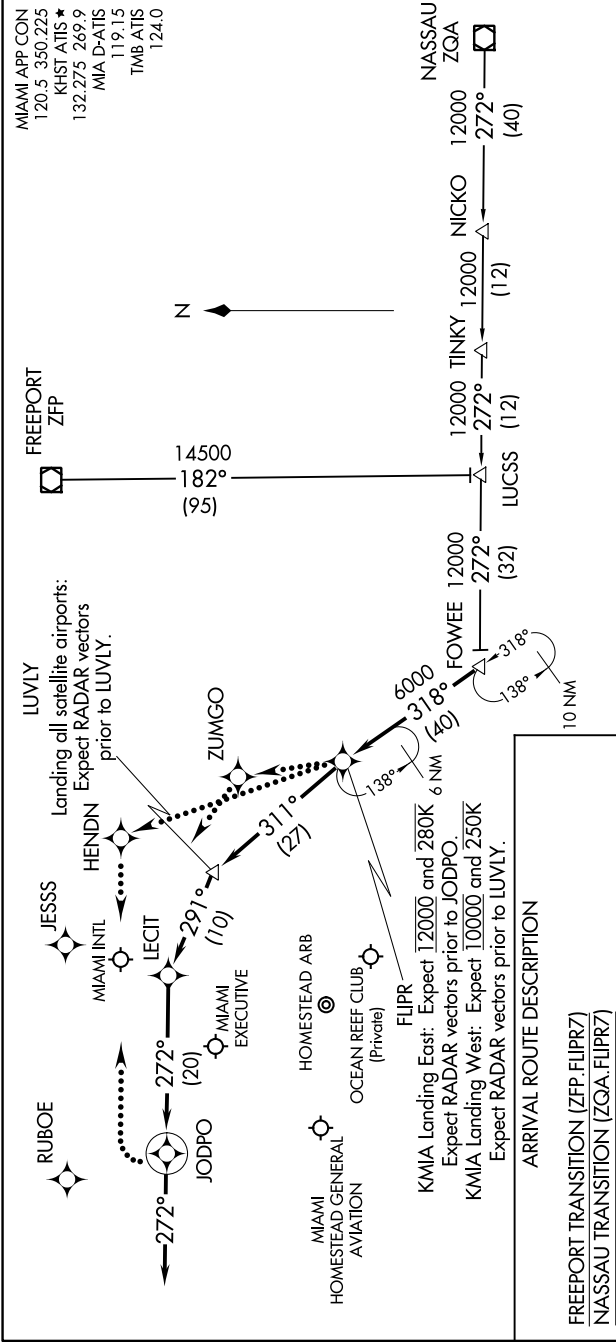


# FLIPR SEVEN ARRIVAL (RNAV)

MIAMI, FLORIDA

SE-3, 25 FEB 2021 to 25 MAR 2021



# FLIPR SEVEN ARRIVAL (RNAV)

MIAMI, FLORIDA

**ARRIVAL ROUTE DESCRIPTION**

**FREEPORT TRANSITION (ZFP.FLIPR7)**

**NASSAU TRANSITION (ZQA.FLIPR7)**

... From FOWEE on track 318° to FLIPR, then on track 311° to LUVLY, then on track 291° to LECIT, then on track 272° to JODPO, then on heading 272° or as assigned by ATC. Expect RADAR vectors to final approach course.

**LOST COMMUNICATIONS**

KMIA Landing 8L/R, 9, 12: Continue track to JODPO, then turn right to intercept the Rwy 9 final approach course, conduct approach.

KMIA Landing 26L/R, 27, 30: Continue track to FLIPR, proceed direct to ZUMGO, then intercept the Rwy 30 final approach course, conduct approach.

Group 6 Aircraft: Continue track to FLIPR, proceed direct to HENDN then intercept the Rwy 27 final approach course, conduct approach.

- NOTE: RADAR required.
- NOTE: RNAV 1.
- NOTE: DME/DME/IRU or GPS required.
- NOTE: Turbojet and turboprop aircraft only.
- NOTE: KMIA Primary Landing Rwy 9, 30.
- NOTE: For non-GPS equipped aircraft: VKZ and ZBV DME's must be operational.
- NOTE: ZFP TRANSITION: For non-GPS equipped aircraft: VKZ, ZBV, and ZFP DME's must be operational.
- NOTE: ZFP TRANSITION: ATC assigned only.

NOTE: Chart not to scale.

SE-3, 25 FEB 2021 to 25 MAR 2021