

TONOPAH, NEVADA

# RNAV (GPS) RWY 32

APCH CRS	Rwy ldg	12,001
321°	TDZE	5550
	Arprt Elev	5550

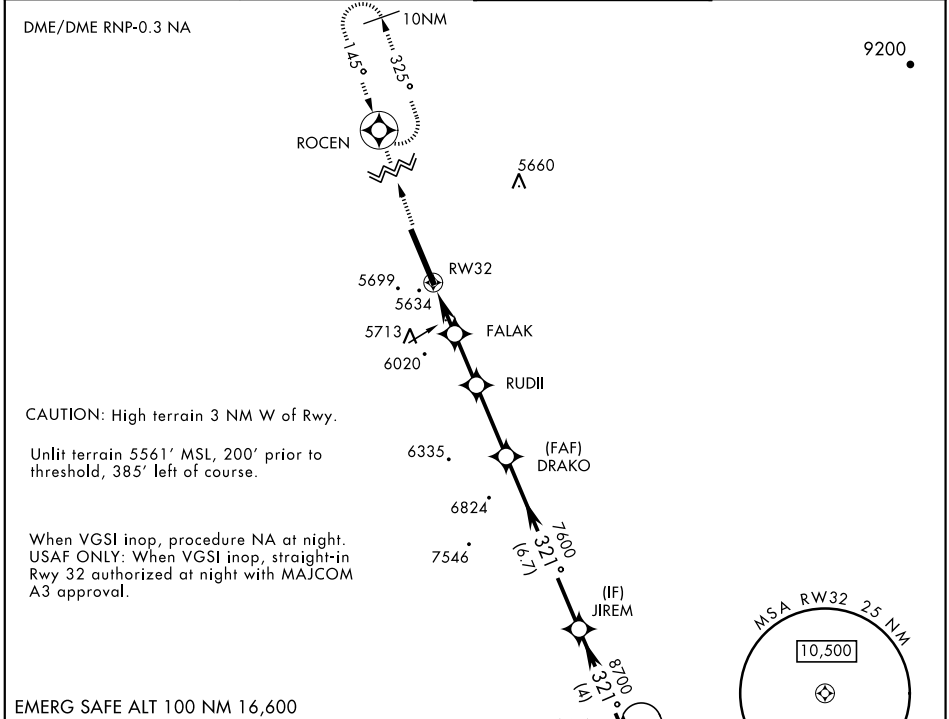
AL-3188 [USAF]

TONOPAH TEST RANGE (KTNX)

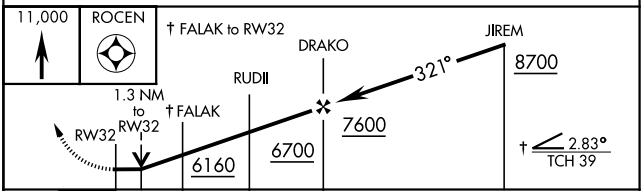
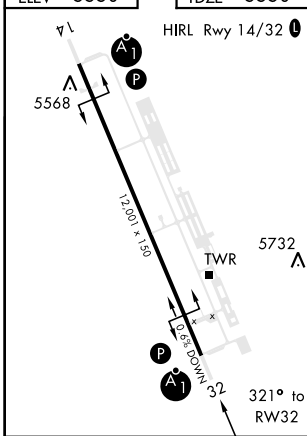
**ALSIF-1** MISSED APPROACH: Climb to 11,000 direct ROCEN and hold, continue climb-in-hold to 11,000.

\* When ALS inop, increase CAT CD vis to 1¼ miles.  
 \*\* Circling NA West of Rwy 14/32.

AWOS <b>113.0</b>	NELLIS CONTROL <b>119.35 254.4</b>	SILVERBOW TOWER ★ <b>124.75 257.95 0</b>	GND CON <b>127.25 335.5</b>
----------------------	---------------------------------------	---	--------------------------------



EMERG SAFE ALT 100 NM 16,600



CATEGORY	A	B	C	D
LNAV MDA *	5980/24 430 (500-½)	5980/40 430 (500-¾)	5980/40 430 (500-¾)	5980/40 430 (500-¾)
CIRCLING **	6040-1 490 (500-1)	6040-1 490 (500-1)	6040-1½ 490 (500-½)	6100-2 550 (600-2)

TONOPAH, NEVADA  
Amdt 3 29MAR18

37°47'N-116°47'W

TONOPAH TEST RANGE (KTNX)

# RNAV (GPS) RWY 32

SW-4, 25 FEB 2021 to 25 MAR 2021

SW-4, 25 FEB 2021 to 25 MAR 2021