

VOR/DME or TACAN RWY 32

VORTAC TQQ 113.0 Chan 77	APCH CRS 314°	Rwy ldg 12,001 THRE 5550 Arprt Elev 5550
--	-------------------------	---

AL-3188 [USAF]

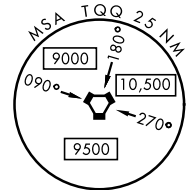
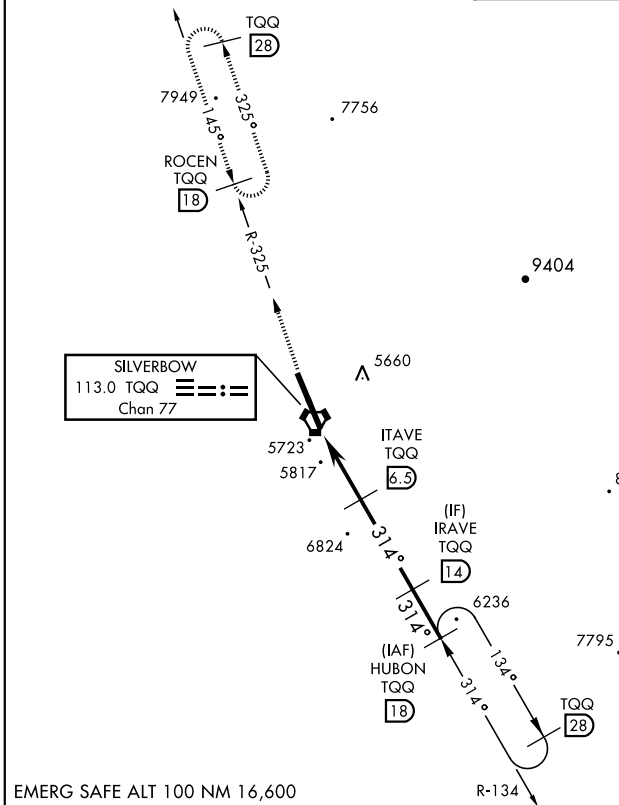
TONOPAH TEST RANGE (KTNX)

▼ * When ALS inop, increase CAT CDE vis to 1½ miles.
** Circling NA W of Rwy 14/32

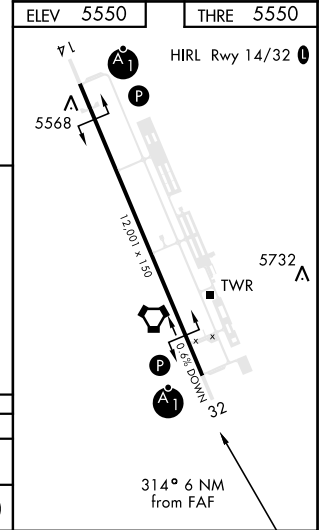
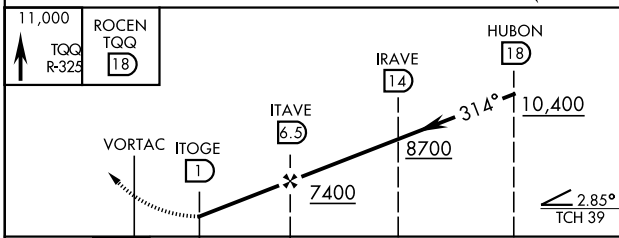


MISSED APPROACH: Climb to 11,000 via TQQ VORTAC R-325 to ROCEN and hold, continue climb in hold to 11,000.

AWOS 113.0	NELLIS CONTROL 119.35 254.4	SILVERBOW TOWER 124.75 257.95	GND CON 127.25 335.5
----------------------	---------------------------------------	---	--------------------------------



EMERG SAFE ALT 100 NM 16,600



CATEGORY	A	B	C	D	E
S-32 *	6080-1 530 (600-1)		530 (600-1)		
☐ CIRCLING **	6080-1 530 (600-1)	530 (600-1)	6080-1½ 530 (600-1½)	6100-2 550 (600-2)	

VOR/DME or TACAN RWY 32

SW-4, 25 FEB 2021 to 25 MAR 2021

SW-4, 25 FEB 2021 to 25 MAR 2021