

|  |                        |  |
|--|------------------------|--|
| VORTAC LAX<br><b>113.6</b><br>Chan <b>83</b> | APP CRS<br><b>135°</b> | Rwy ldg<br>TDZE <b>96</b><br>Apt Elev <b>103</b> |
|--|------------------------|--|

# VOR RWY 11L

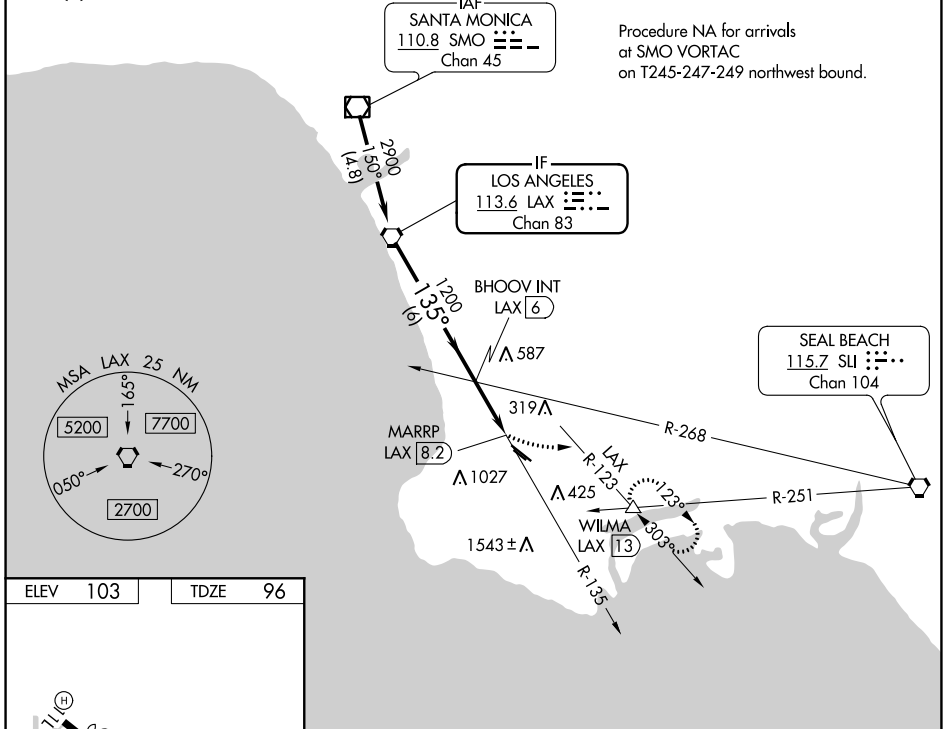
ZAMPERINI FIELD (TOA)

**⚠** Circling NA southwest of Rwy 11R-29L. When local altimeter setting not received, except for operators with approved weather reporting service, use Los Angeles Intl altimeter setting and increase all MDA 40 feet and increase S-11L Cat A visibility and Circling Cat C visibility ¼ SM. Rwy 11L helicopter visibility reduction below ¾ SM NA.

**MISSED APPROACH:** Climbing left turn to 3000 on heading 075° and on LAX VORTAC R-123 to WILMA INT/LAX 13 DME and hold, continue climb-in-hold to 3000.

|                      |   |   |                         |                         |
|----------------------|---|---|-------------------------|-------------------------|
| ATIS<br><b>125.6</b> | SOCAL APP CON<br><b>124.3 363.2</b> (Rwys 11L, 11R)<br><b>127.2 269.6</b> (Rwys 29L, 29R) | TORRANCE TOWER*<br><b>133.075 257.8</b> (NORTH)<br><b>124.0</b> (CTAF) <b>257.8</b> (SOUTH) | GND CON<br><b>120.9</b> | UNICOM<br><b>122.95</b> |
|----------------------|---|---|-------------------------|-------------------------|

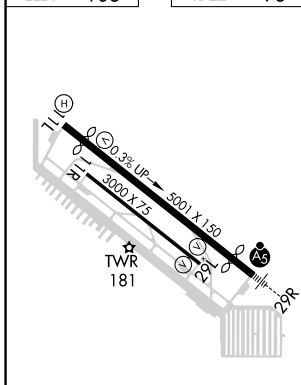
⚠ 2908



SW-3, 25 FEB 2021 to 25 MAR 2021

SW-3, 25 FEB 2021 to 25 MAR 2021

|                 |                |
|-----------------|----------------|
| ELEV <b>103</b> | TDZE <b>96</b> |
|-----------------|----------------|



REIL Rwy 29L  
MIRL Rwys 11L-29R and 11R-29L  
FAF to MAP 2.2 NM

|         |      |      |      |      |      |
|---------|------|------|------|------|------|
| Knots   | 60   | 90   | 120  | 150  | 180  |
| Min:Sec | 2:12 | 1:28 | 1:06 | 0:53 | 0:44 |

|   |                      |                        |                        |                  |           |            |
|---|----------------------|------------------------|------------------------|------------------|-----------|------------|
| VGSIs and descent angles not coincident (VGSi Angle 3.50/TCH 10). |                      |                        |                        | 3000<br>hdg 075° | LAX R-123 | WILMA<br>△ |
| LAX VORTAC  | 2900                 | BHOOV INT LAX 6        | 1200                   | MARRP LAX 8.2    |           |            |
| 6 NM  |                      | 2.2 NM                 |                        | 0.5 NM           |           |            |
| CATEGORY  | A                    | B                      | C                      | D                |           |            |
| S-11L   | 980-1<br>884 (900-1) | 980-1¼<br>884 (900-1¼) | 980-2½<br>884 (900-2½) | NA               |           |            |
| <input checked="" type="checkbox"/> CIRCLING                      | 980-1¼               | 877 (900-1¼)           | 980-2½<br>877 (900-2½) | NA               |           |            |