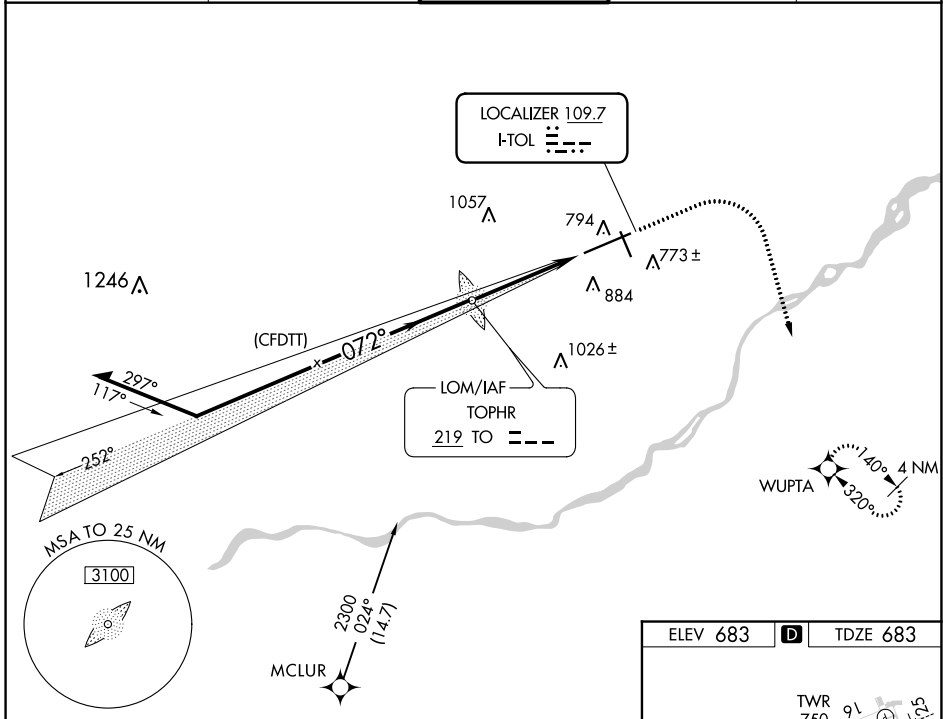


LOC I-TOL <b>109.7</b>	APP CRS <b>072°</b>	Rwy ldg <b>10600</b> TDZE <b>683</b> Apt Elev <b>683</b>
---------------------------	------------------------	--

**ILS Z or LOC Z RWY 7**  
EUGENE F KRANZ TOLEDO EXPRESS (TOL)

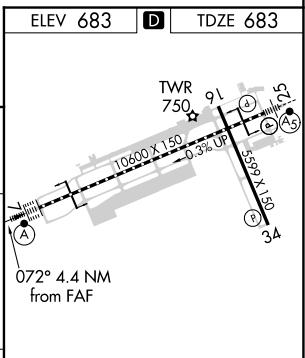
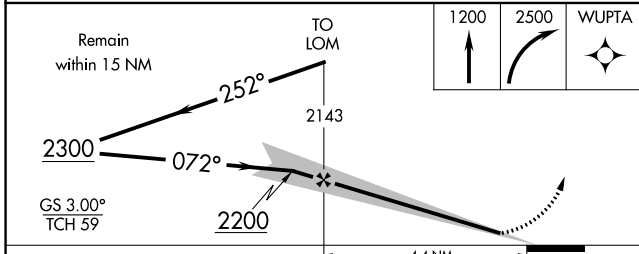
ADF or RADAR required for procedure entry. RNAV 1-GPS required. ADF required for LOC only.	ALSF-2 	MISSED APPROACH: Climb to 1200 then climbing right turn to 2500 direct WUPTA and hold.
For inop ALS, increase S-ILS 7 Cat E visibility to RVR 4000, S-LOC 7 Cat C/D/E visibility to 1 3/8 SM.		

ATIS <b>118.75 290.225</b>	TOLEDO APP CON <b>134.35 317.55</b>	TOLEDO TOWER <b>118.1 285.4</b>	GND CON <b>121.9 348.6</b>	CLNC DEL <b>121.75 348.6</b>
-------------------------------	--	------------------------------------	-------------------------------	---------------------------------



EC-2, 25 FEB 2021 to 25 MAR 2021

EC-2, 25 FEB 2021 to 25 MAR 2021



CATEGORY	A	B	C	D	E	TDZ/CL Rwy 7 HIRL Rwy 7-25 MIRL Rwy 16-34 REIL Rws 16 and 34 FAF to MAP 4.4 NM
S-ILS 7	883/18 200 (200-1/2)					
S-LOC 7	1140/24	457 (500-1/2)	1140/45	457 (500-3/8)		
CIRCLING	1200-1	517 (600-1)	1300-1 3/4 617 (700-1 3/4)	1360-2 1/4 677 (700-2 1/4)	1360-2 1/2 677 (700-2 1/2)	
	Knots	60	90	120	150	180
	Min:Sec	4:24	2:56	2:12	1:46	1:28