

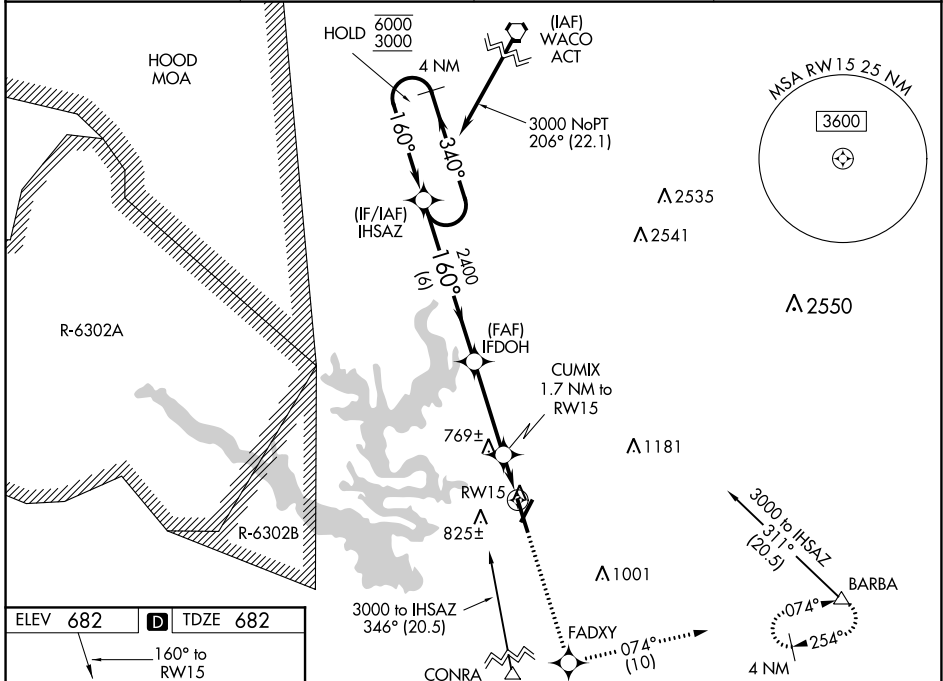
WAAS Ch 78101 W15A	APP CRS 160°	Rwy Idg TDZE Apt Elev	6301 682 682
--	------------------------	-----------------------------	---

RNAV (GPS) RWY 15

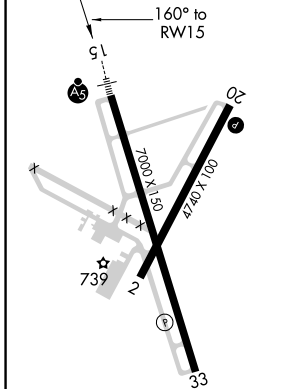
DRAUGHON-MILLER CENTRAL TEXAS RGNL (TPL)

RNP APCH.	MALS R	MISSED APPROACH: Climb to 3600 direct FADXY and on track 074° to BARBA and hold, continue climb-in-hold to 3600.
<p>▼ For uncompensated Baro-VNAV systems, LNAV/VNAV NA below -16°C or above 54°C. For inop ALS, increase LNAV/VNAV all Cats and LNAV Cats C visibility to 1 SM.</p>		

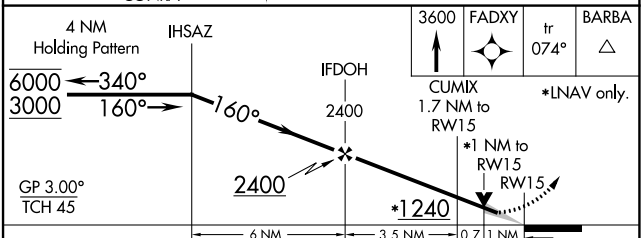
AWOS-3PT 134.975	GRAY APP CON 120.075 370.0	CLNC DEL 125.9	UNICOM 123.0 (CTAF)
----------------------------	--------------------------------------	--------------------------	-------------------------------



ELEV 682	D TDZE 682
-----------------	--------------------------



MIRL Rwy 2-20
MIRL Rwy 15-33



CATEGORY	A	B	C	D
LPV DA		882-½	200 (200-½)	
LNAV/VNAV DA		1025-¾	343 (400-¾)	
LNAV MDA	1040-½	358 (400-½)	1040-⅝ 358 (400-⅝)	1040-1 358 (400-1)
C CIRCLING	1120-1 438 (500-1)	1180-1 498 (500-1)	1280-1½ 598 (600-1½)	1420-2¼ 738 (800-2¼)

SC-3, 25 FEB 2021 to 25 MAR 2021

SC-3, 25 FEB 2021 to 25 MAR 2021