

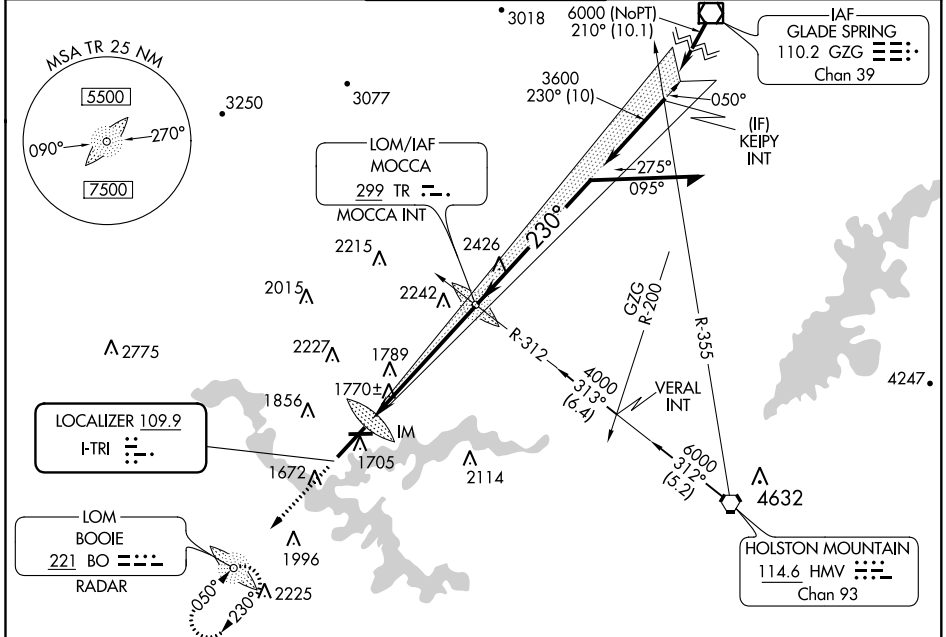
LOC I-TRI <b>109.9</b>	APP CRS <b>230°</b>	Rwy ldg TDZE Apt Elev	<b>8000</b> <b>1518</b> <b>1519</b>
---------------------------	------------------------	-----------------------------	---

# ILS RWY 23 (SA CAT I)

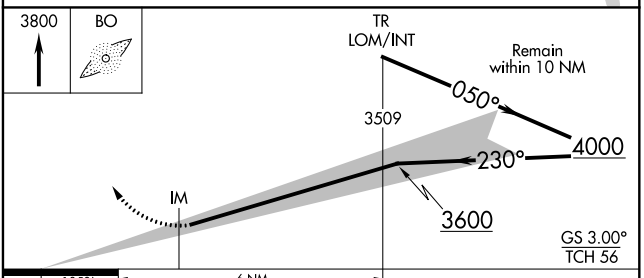
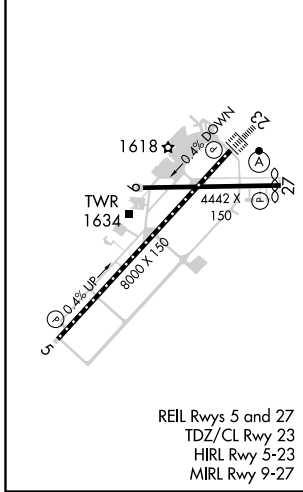
TRI-CITIES (TRI)

ADF or RADAR required.	ALSF-2 	MISSED APPROACH: Climb to 3800 direct BOOIE LOM/RADAR and hold.
Requires specific OPSPEC, MSPEC, or LOA approval and use of HUD to DH. CAUTION: Air traffic control tower 1634 feet MSL located 940 feet right of runway centerline 357 feet from runway threshold. Procedure NA when tower closed.		

ATIS <b>118.25</b>	TRI-CITY APP CON ★ <b>134.425 349.0</b>	TRI-CITY TOWER ★ <b>119.5 (CTAF) 257.8</b>	GND CON <b>121.7 348.6</b>	UNICOM <b>122.95</b>
-----------------------	--	---	-------------------------------	-------------------------



ELEV 1519	<b>D</b>	TDZE 1518
-----------	----------	-----------



CATEGORY	A	B	C	D
S-ILS 23	RA 192/16 150 DA 1668			

**SA CATEGORY I ILS - SPECIAL AIRCREW & AIRCRAFT CERTIFICATION REQUIRED**

SE-1, 25 FEB 2021 to 25 MAR 2021

SE-1, 25 FEB 2021 to 25 MAR 2021