

# RNAV (GPS) RWY 11

TRUCKEE-TAHOE (TRK)

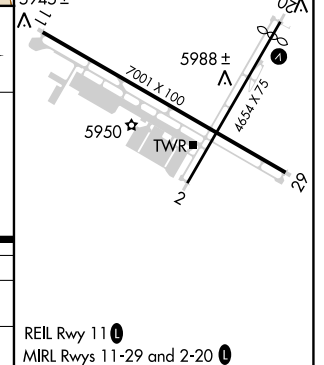
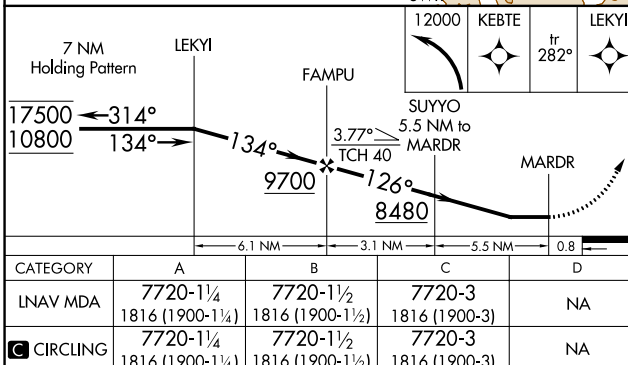
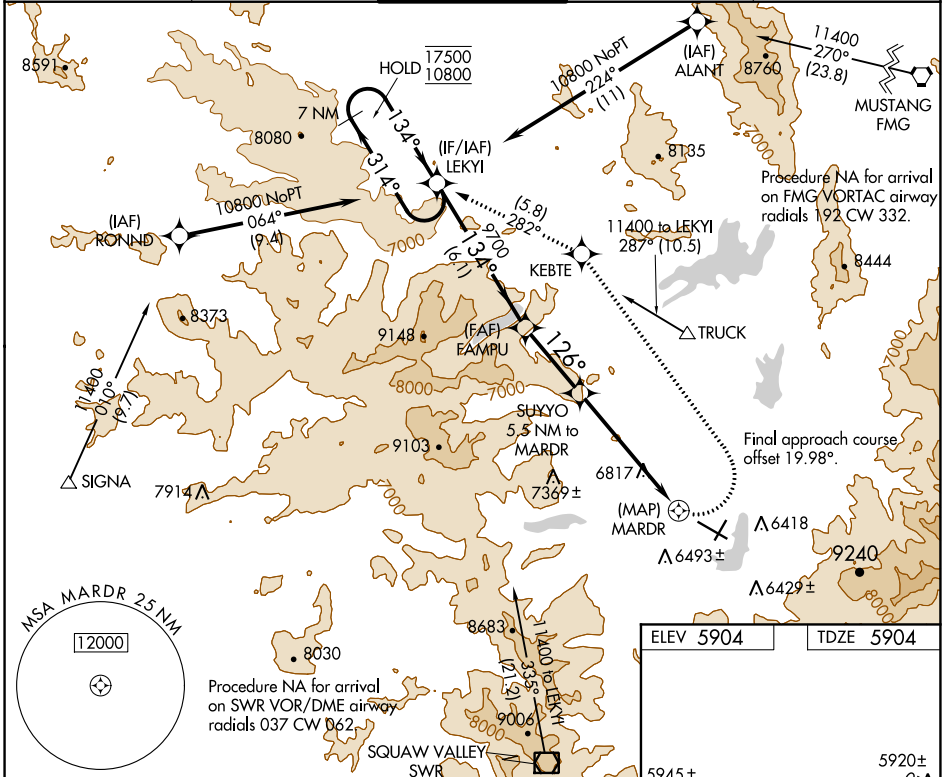
APP CRS	Rwy Idg	<b>7001</b>
<b>126°</b>	TDZE	<b>5904</b>
	Apt Elev	<b>5904</b>

RNP APCH.

▼ Circling NA for Cat C south of Rwy 29 and east of Rwy 2.  
▲ Procedure NA at night. Rwy 11 helicopter visibility reduction below 1 SM NA. When local altimeter setting not received, procedure NA.  
❄ -18°C

MISSED APPROACH: (Do not exceed 220K until KEBTE) Climbing left turn to 12000 direct KEBTE and track 282° to LEKYI and hold, continue climb-in-hold 12000.

AWOS-3PT <b>118.0</b>	OAKLAND CENTER <b>127.95 316.1</b>	TRUCKEE TOWER * <b>120.575 (CTAF) 0</b>	GND CON <b>118.3</b>	UNICOM <b>122.95</b>
--------------------------	---------------------------------------	--	-------------------------	-------------------------



CATEGORY	A	B	C	D
	LNVA MDA 7720-1¼ 1816 (1900-1¼)	7720-1½ 1816 (1900-1½)	7720-3 1816 (1900-3)	NA
CIRCLING	7720-1¼ 1816 (1900-1¼)	7720-1½ 1816 (1900-1½)	7720-3 1816 (1900-3)	NA

SW-2, 25 FEB 2021 to 25 MAR 2021

SW-2, 25 FEB 2021 to 25 MAR 2021