

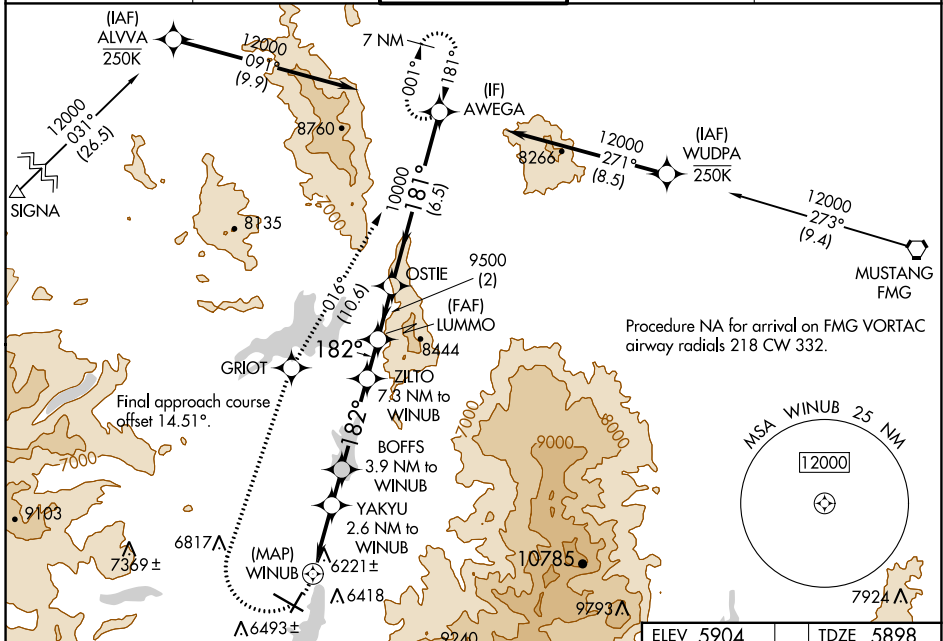
WAAS CH 87135 W20A	APP CRS 182°	Rwy Idg TDZE Apt Elev	4539 5898 5904
--	------------------------	-----------------------------	---

RNAV (GPS) RWY 20

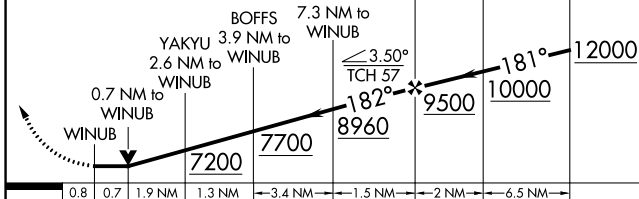
TRUCKEE-TAHOE (TRK)

RNP APCH.	<p>⚠ Circling to Rwy 2, 11, 29 NA at night. Circling NA for Cat C south of Rwy 29 and east of Rwy 2. Rwy 20 helicopter visibility reduction below 3/4 SM NA. When local altimeter setting not received, procedure NA.</p> <p>⚠ -18°C</p>	<p>MISSED APPROACH: (Do not exceed 200K until GRIOT) Climbing right turn to 12000 direct GRIOT and on track 016° to AWEGA and hold, continue climb-in-hold to 12000.</p> <p>*Missed approach requires minimum climb of 270 feet per NM to 7700.</p>
-----------	--	---

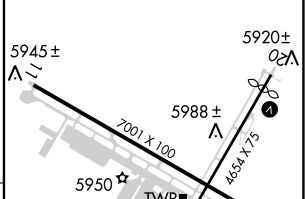
AWOS-3PT 118.0	OAKLAND CENTER 127.95 316.1	TRUCKEE TOWER * 120.575 (CTAF) 0	GND CON 118.3	UNICOM 122.95
--------------------------	---------------------------------------	---	-------------------------	-------------------------



12000	GRIOT	tr 016°	AWEGA	VGSI and descent angles not coincident (VGSI Angle 3.50/TCH 25).
-------	-------	---------	-------	--



ELEV 5904	TDZE 5898
-----------	-----------



CATEGORY	A	B	C	D
LP MDA*	6480-1	582 (600-1)	6480-1 3/4 582 (600-1 3/4)	NA
LP MDA	6780-1 1/4	882 (900-1 1/4)	6780-2 1/2 882 (900-2 1/2)	NA
LNNAV MDA	7120-1 1/4 1222 (1300-1 1/4)	7120-1 1/2 1222 (1300-1 1/2)	7120-3 1222 (1300-3)	NA
CIRCLING	7120-1 1/4 1216 (1300-1 1/4)	7220-1 1/2 1316 (1400-1 1/2)	7700-3 1796 (1800-3)	NA

REIL Rwy 11 0	MIRL Rwy 11-29 and 2-20 0
----------------------	----------------------------------

SW-2, 25 FEB 2021 to 25 MAR 2021

SW-2, 25 FEB 2021 to 25 MAR 2021