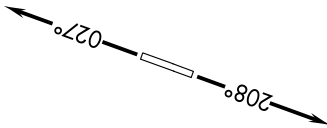


EC-1, 25 FEB 2021 to 25 MAR 2021

**TOP ALTITUDE:
ASSIGNED BY ATC**

AWOS-3
119.075
CTAF
122.7
DETROIT DEP CON
134.3 284.0

KZLOV
15000
4000



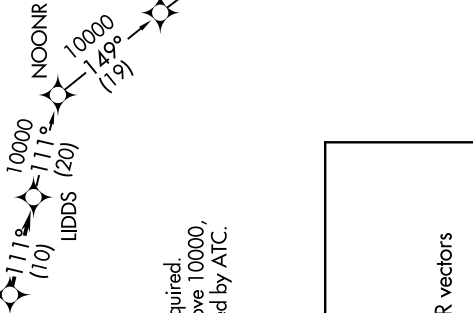
TAKEOFF MINIMUMS:
Standard.

NOTE: RNAV 1.

NOTE: RADAR required.

NOTE: DME/DME/IRU or GPS required.

NOTE: Turbojet departures at/above 10000, maintain 280K until advised by ATC.



DEPARTURE ROUTE DESCRIPTION

TAKEOFF RUNWAY 3: Climb on heading 027° or as assigned for RADAR vectors to cross KZLOV between 4000 and 15000, thence....

TAKEOFF RUNWAY 21: Climb on heading 208° or as assigned for RADAR vectors to cross KZLOV between 4000 and 15000, thence....

....on track 111° to LIDDS, then on (transition). Maintain ATC assigned altitude, expect filed altitude 10 minutes after departure.

GRIVY TRANSITION (LIDDS2.GRIVY):

NOTE: Chart not to scale.

EC-1, 25 FEB 2021 to 25 MAR 2021