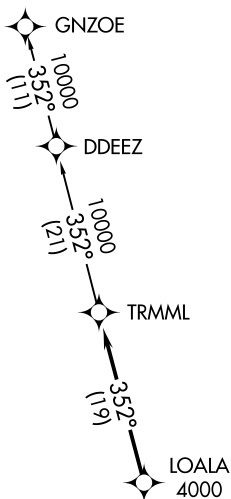


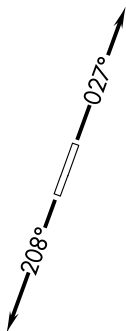
**TOP ALTITUDE:
ASSIGNED BY ATC**

AWOS-3
119.075
CTAF
122.7
DETROIT DEP CON
134.3 284.0



TAKEOFF MINIMUMS:
Standard.

- NOTE: RNAV 1.
- NOTE: RADAR required.
- NOTE: DME/DME/IRU or GPS required.
- NOTE: Turbojet departures at/above 10000, maintain 280K until advised by ATC.



NOTE: Chart not to scale.

DEPARTURE ROUTE DESCRIPTION

TAKEOFF RUNWAY 3: Climb on heading 027° or as assigned for RADAR vectors to cross LOALA at or above 4000, thence....

TAKEOFF RUNWAY 21: Climb on heading 208° or as assigned for RADAR vectors to cross LOALA at or above 4000, thence....

....on track 352° to TRMML, then on (transition). Maintain ATC assigned altitude, expect filed altitude 10 minutes after departure.

GNZOE TRANSITION (TRMML3.GNZOE):