

VOR/DME OTB 109.8 Chan 35	APP CRS 023°	Rwy Idg TDZE Apt Elev	N/A N/A 347
----------------------------------------	------------------------	-----------------------------	----------------------------------------

COPTER VOR 023°

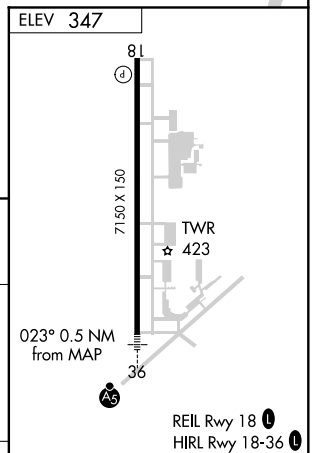
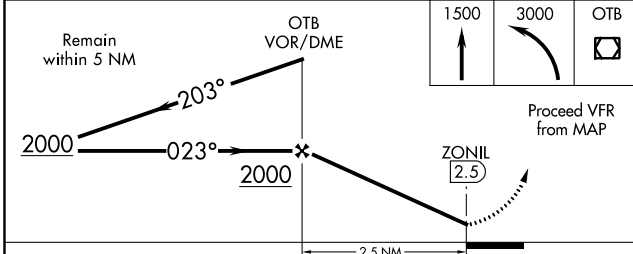
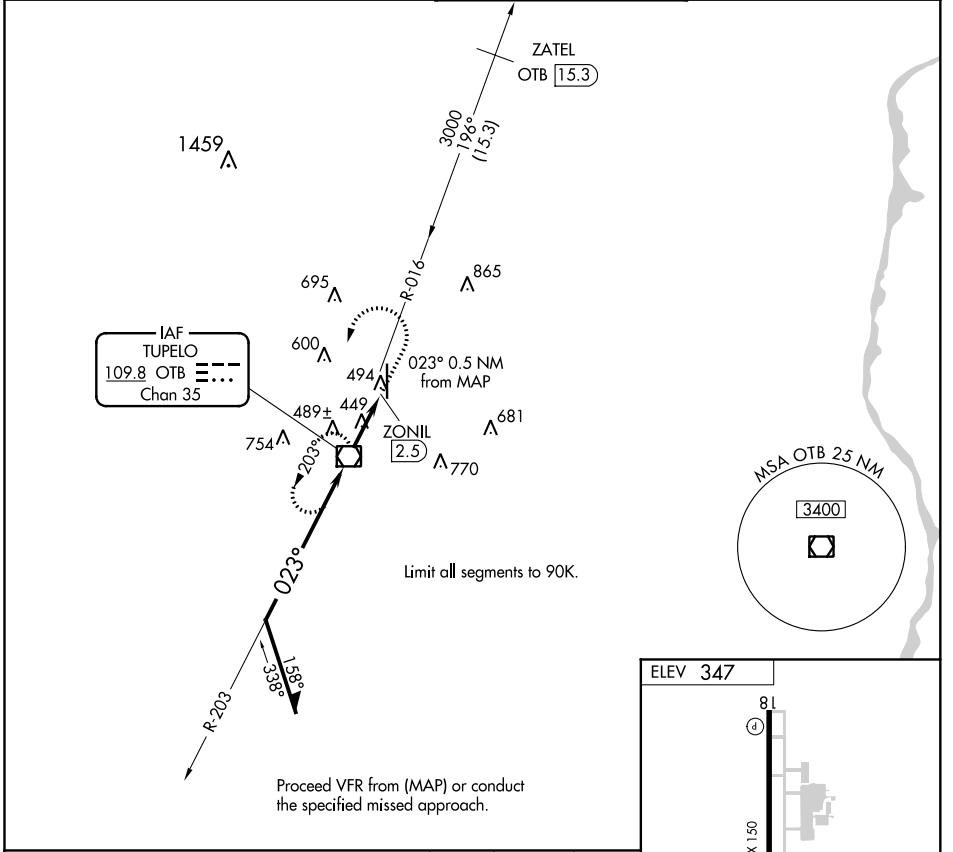
TUPELO RGNL (TUP)

RADAR required for procedure entry. DME required.

When local altimeter setting not received, use Columbus AFB altimeter setting and increase MDA 120 feet.

MISSED APPROACH: Climb to 1500 then climbing left turn 3000 direct OTB VOR/DME and hold.

ASOS 133.525	MEMPHIS CENTER 128.5 279.55	TUPELO TOWER* 118.775 (CTAF) 0 254.275	GND CON 121.825 254.275
------------------------	---------------------------------------	--------------------------------------------------	-----------------------------------



CATEGORY	COPTER		FAF to MAP 2.5 NM					
H-023	700-1	353 (400-1)	Knots	45	60	75	90	105
			Min:Sec	3:20	2:30	2:00	1:40	1:26

SC-4, 25 FEB 2021 to 25 MAR 2021

SC-4, 25 FEB 2021 to 25 MAR 2021