

VOR/DME OTB <b>109.8</b> Chan <b>35</b>	APP CRS <b>196°</b>	Rwy Idg <b>7150</b> TDZE <b>344</b> Apt Elev <b>347</b>
-----------------------------------------------	------------------------	---------------------------------------------------------------

# VOR RWY 18

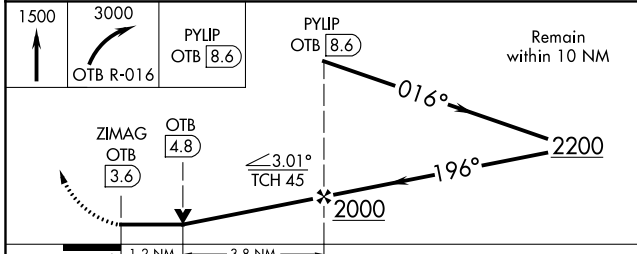
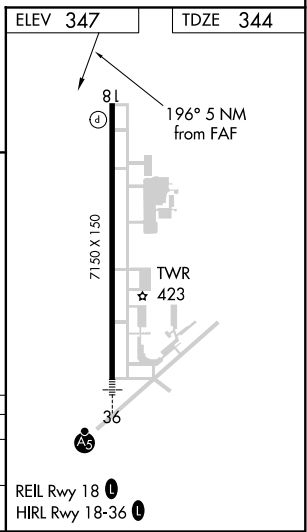
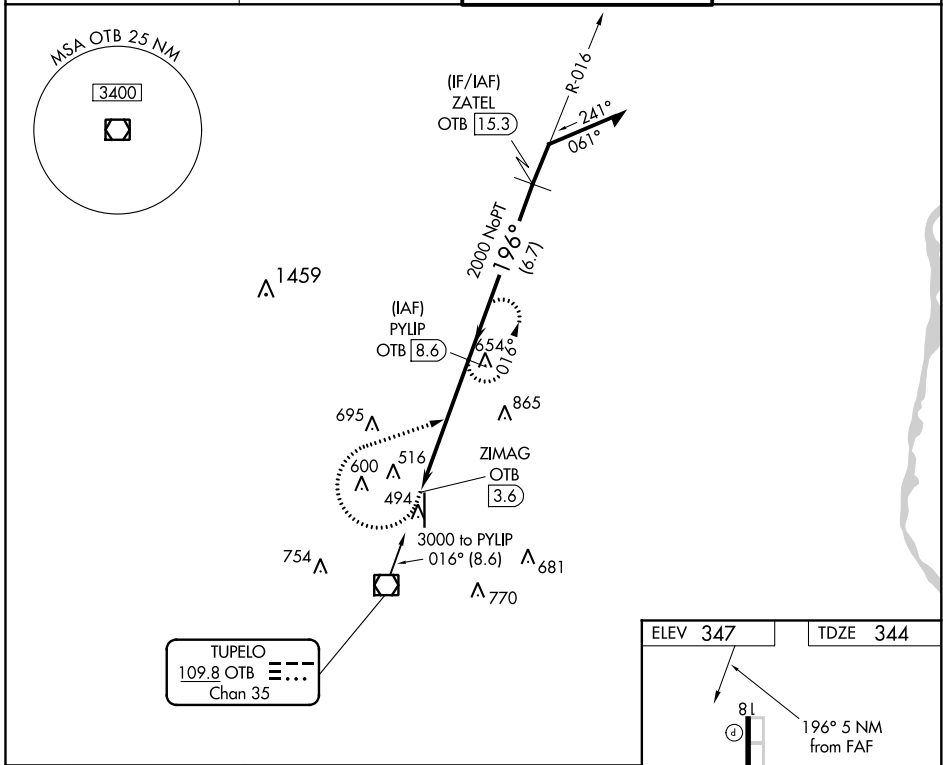
TUPELO RGNL (TUP)

RADAR required for procedure entry. DME required.

**⚠** When local altimeter setting not received, use Columbus AFB altimeter setting and increase all MDA 120 feet. Increase S-18 Cat C/D visibility  $\frac{3}{8}$  SM; increase Circling Cat C/D visibility  $\frac{1}{2}$  SM. VDP NA when using Columbus AFB altimeter setting.

MISSED APPROACH: Climb to 1500 then climbing right turn to 3000 on OTB VOR/DME R-016 to PYLIP/OTB 8.6 DME and hold.

ASOS <b>133.525</b>	MEMPHIS CENTER <b>128.5 279.55</b>	TUPELO TOWER ★ <b>118.775 (CTAF) 0 254.275</b>	GND CON <b>121.825 254.275</b>
------------------------	---------------------------------------	---------------------------------------------------	-----------------------------------



CATEGORY	A	B	C	D
S-18	780-1 436 (500-1)		780-1¼ 436 (500-1¼)	
CIRCLING	820-1 473 (500-1)		900-1½ 553 (600-1½)	1140-2½ 793 (800-2½)

SC-4, 25 FEB 2021 to 25 MAR 2021

SC-4, 25 FEB 2021 to 25 MAR 2021