

WAAS CH <b>77836</b> <b>W22A</b>	APP CRS <b>217°</b>	Rwy Idg TDZE Apt Elev	<b>4997</b> <b>1119</b> <b>1119</b>
--	------------------------	-----------------------------	---

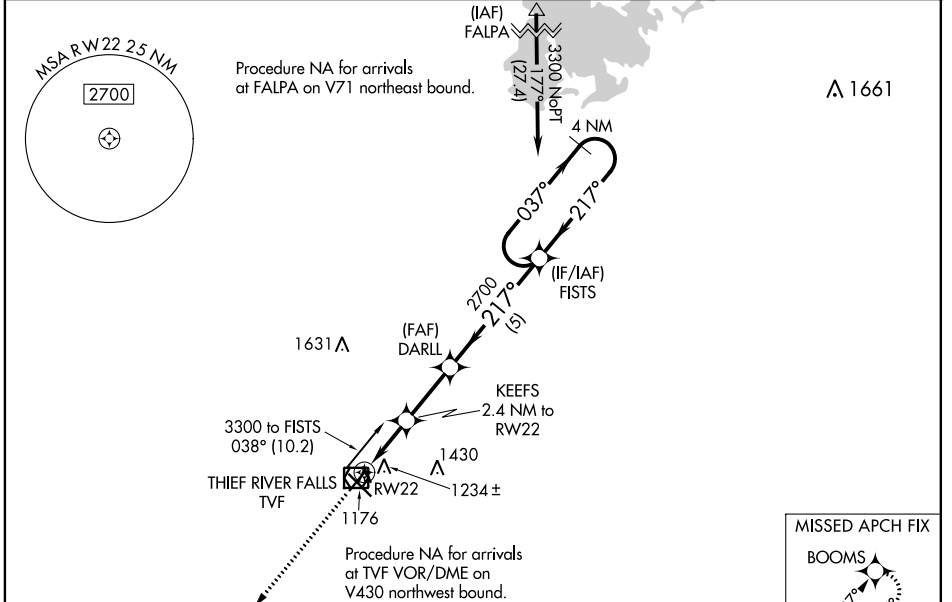
# RNAV (GPS) RWY 22

THIEF RIVER FALLS RGNL (TVF)

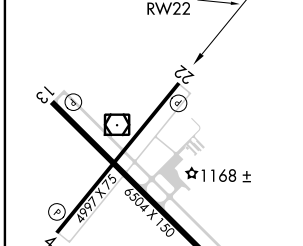
**⚠** Baro-VNAV and VDP NA when using Crookston altimeter setting. For uncompensated Baro-VNAV systems, LNAV/VNAV NA below -17°C (2°F) or above 54°C (130°F). DME/DME RNP-0.3 NA. When local altimeter setting not received, use Crookston altimeter setting and increase all DA 82 feet and all MDA 100 feet. Increase LPV all Cats visibility to 1 1/8 mile and LNAV/VNAV all Cats visibility to 1 1/4 mile.

**MISSED APPROACH:**  
Climb 3300 direct BOOMS and hold.

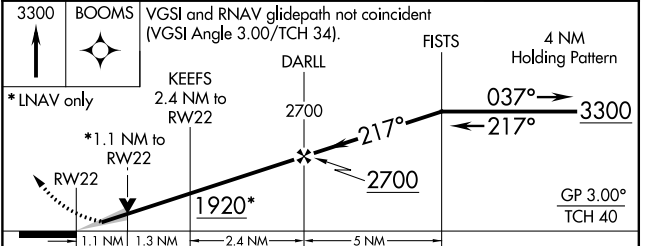
AWOS-3PT <b>119.025</b>	MINNEAPOLIS CENTER <b>132.15 269.6</b>	UNICOM <b>122.8 (CTAF)</b> <b>📻</b>
----------------------------	---	--



ELEV 1119	<b>D</b>	TDZE 1119
-----------	----------	-----------



HIRL Rwy 13-31 <b>📻</b>
MIRL Rwy 4-22 <b>📻</b>
REIL Rwy 4, 13 and 22 <b>📻</b>



CATEGORY	A	B	C	D
LPV DA	1369-1	250 (300-1)		NA
LNAV/VNAV DA	1396-1	277 (300-1)		NA
LNAV MDA	1500-1	381 (400-1)		NA
<b>C</b> CIRCLING	1540-1 421 (500-1)	1580-1 461 (500-1)		NA

NC-1, 25 FEB 2021 to 25 MAR 2021

NC-1, 25 FEB 2021 to 25 MAR 2021