

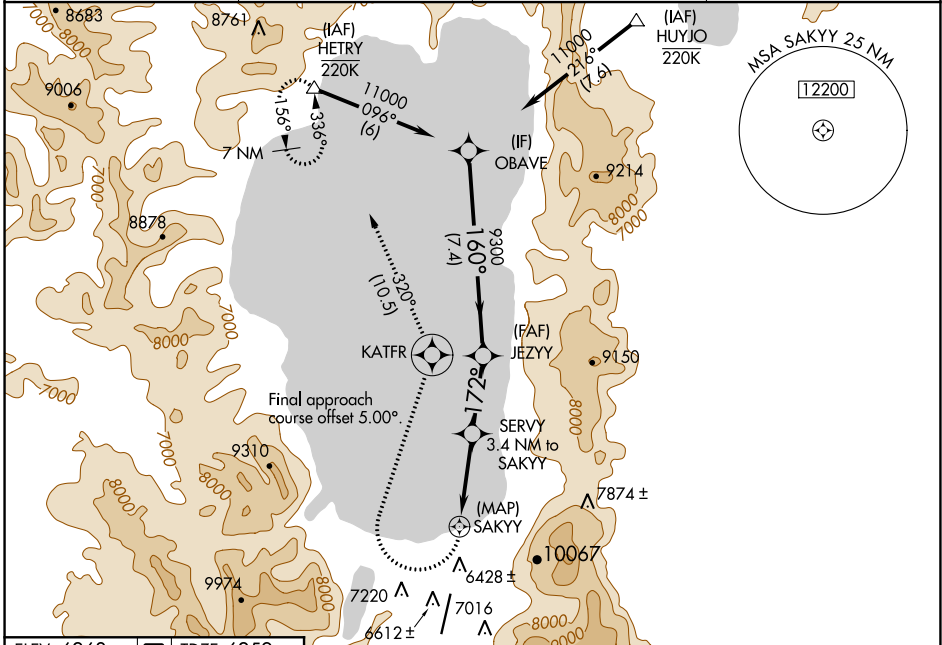
WAAS CH 57943 W18A	APP CRS 172°	Rwy Idg TDZE Apt Elev	7017 6259 6268
--	------------------------	-----------------------------	---

RNAV (GPS) RWY 18

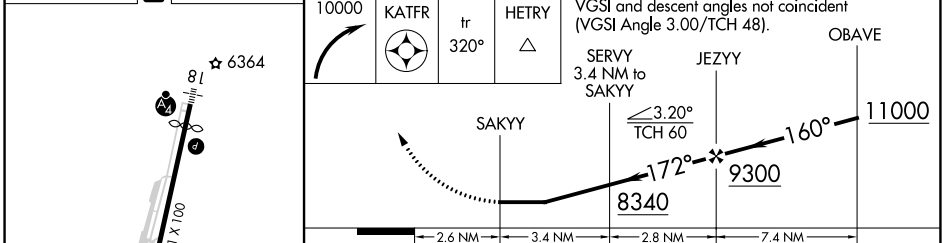
LAKE TAHOE (TVL)

RNP APCH.	MALSF	MISSED APPROACH: (Do not exceed 185K until KATFR). Climbing right turn to 10000 direct KATFR then on track 320° to HETRY and hold, continue climb-in-hold to 12000. * Missed approach requires minimum climb of 425 feet per NM to 10000.
<p>▼ Circling NA at night. Rwy 18 helicopter visibility reduction below 3/4 SM NA. When local altimeter setting not received, -1.3°C procedure NA. Circling NA east of Rwy 18-36.</p>		

ASOS 124.725	OAKLAND CENTER 127.95 316.1	CLNC DEL 134.3	CTAF 122.85
------------------------	---------------------------------------	--------------------------	-----------------------



ELEV 6268	D	TDZE 6259
-----------	----------	-----------



CATEGORY	A	B	C	D
LP MDA *	6680-3 421 (500-3)			
LP MDA	7120-3	861 (900-3)	7140-3 881 (900-3)	7320-3 1061 (1100-3)
LNAV MDA *	6980-3 721 (800-3)			
LNAV MDA	7280-3 1021 (1100-3)	7620-3 1361 (1400-3)	8160-3 1901 (1900-3)	NA
C CIRCLING	7420-3 1152 (1200-3)	7680-3 1412 (1500-3)	8160-3 1892 (1900-3)	NA

SW-2, 25 FEB 2021 to 25 MAR 2021

SW-2, 25 FEB 2021 to 25 MAR 2021