

VORTAC TWF <b>115.8</b> Chan <b>105</b>	APP CRS <b>077°</b>	Rwy Idg TDZE <b>4149</b> Apt Elev <b>4154</b>	<b>8703</b> <b>4149</b> <b>4154</b>
---	------------------------	---	---

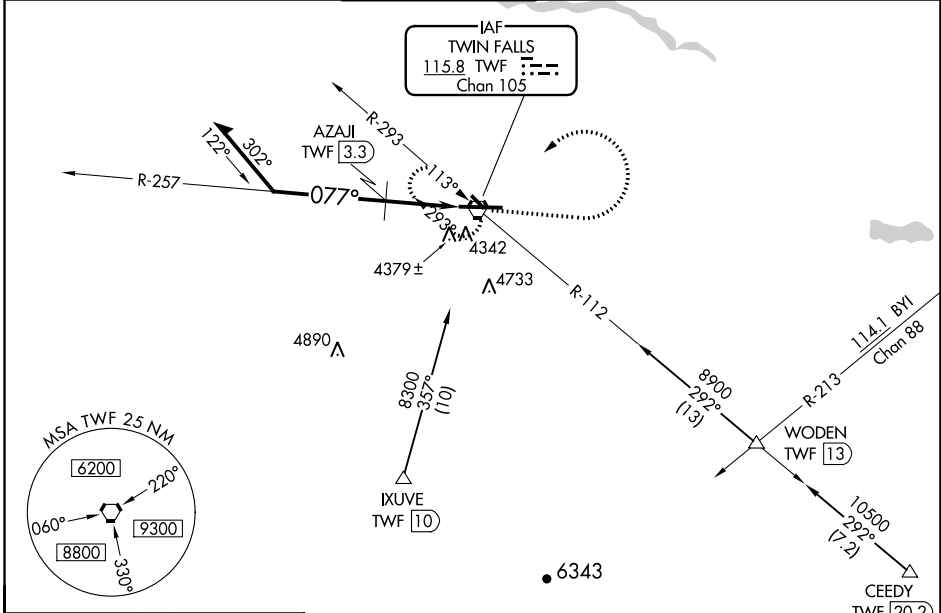
# VOR RWY 8

JOSLIN FIELD-MAGIC VALLEY RGNL (TWF')

**N** Night landing: Rwy 30 NA. When local altimeter setting not received, use Jerome altimeter setting and increase all MDA 60 feet and S-8 Cats C and D visibility ½ mile, S-8 Cat B and Circling Cat B and C visibility ¼ mile. Increase AZAJI FIX minimums S-8 Cat C and D and Circling Cat C visibility ¼ mile. VDP NA when using Jerome altimeter setting.

**MISSED APPROACH:** Climb to 6000 then left turn direct TWF VORTAC and hold.

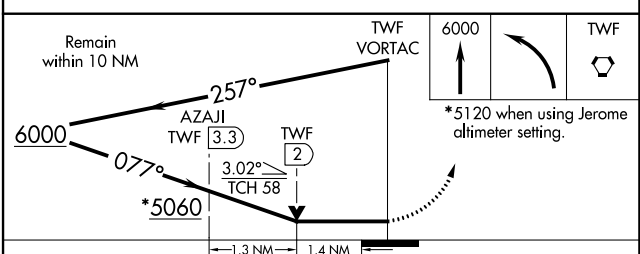
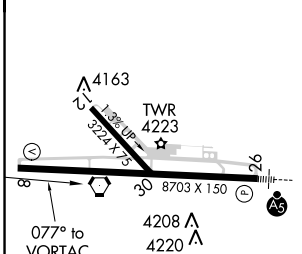
ASOS <b>135.025</b>	TWIN FALLS APP CON* <b>126.7 353.75</b>	TWIN FALLS TOWER* <b>118.2 (CTAF) 0 317.5</b>	GND CON <b>121.7</b>	CLNC DEL <b>123.65</b>	UNICOM <b>122.95</b>
------------------------	--	--	-------------------------	---------------------------	-------------------------



NW-1, 25 FEB 2021 to 25 MAR 2021

NW-1, 25 FEB 2021 to 25 MAR 2021

ELEV 4154	TDZE 4149
-----------	-----------



CATEGORY	A	B	C	D
S-8	5060-1¼	911 (1000-1¼)	5060-2½	911 (1000-2½)
<b>C</b> CIRCLING	5060-1¼	906 (1000-1¼)	5100-2¾ 946 (1000-2¾)	5100-3 946 (1000-3)
<b>AZAJI FIX MINIMUMS</b>				
S-8	4640-1	491 (500-1)	4640-1¾	491 (500-1¾)
<b>C</b> CIRCLING	4700-1 546 (600-1)	4780-1 626 (700-1)	5100-2¾ 946 (1000-2¾)	5100-3 946 (1000-3)