

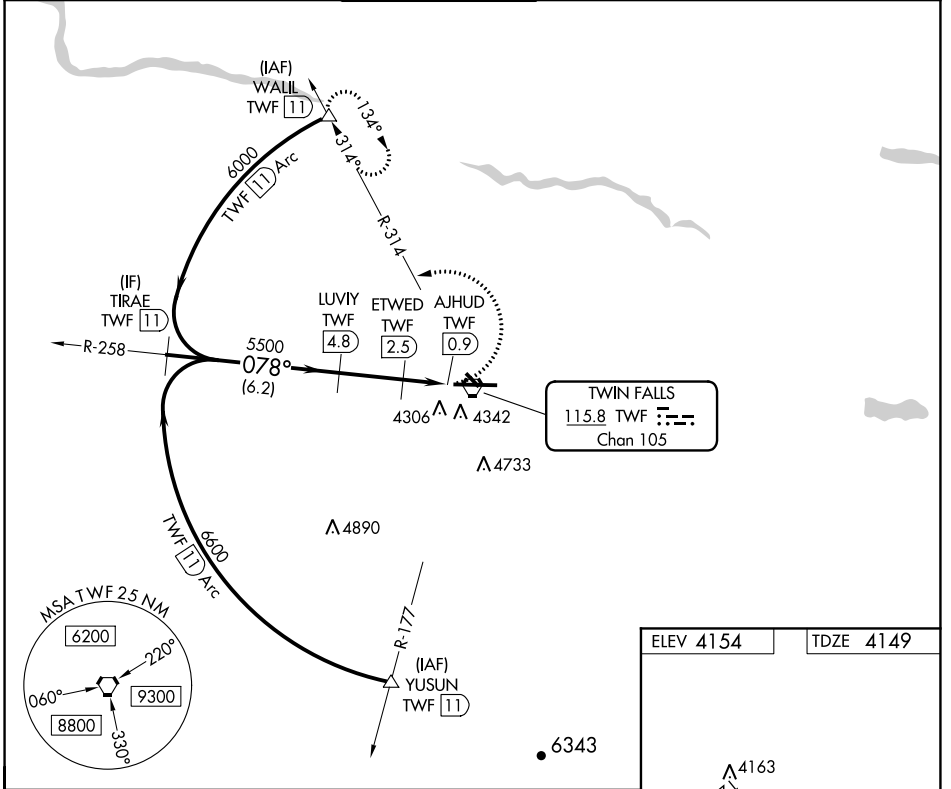
VORTAC TWF <b>115.8</b> Chan <b>105</b>	APP CRS <b>078°</b>	Rwy Idg TDZE <b>4149</b> Apt Elev <b>4154</b>	<b>8703</b>
---	------------------------	---	-------------

**VOR/DME RWY 8**  
JOSLIN FIELD-MAGIC VALLEY RGNL (TWF)

**▼** Night landing: Rwy 30 NA. VDP NA with Jerome altimeter setting.  
**▲** When local altimeter setting not received, use Jerome altimeter setting and increase all MDA 60 feet and S-8 Cats C and D visibility ¼ mile and Circling Cat C visibility ¼ mile.

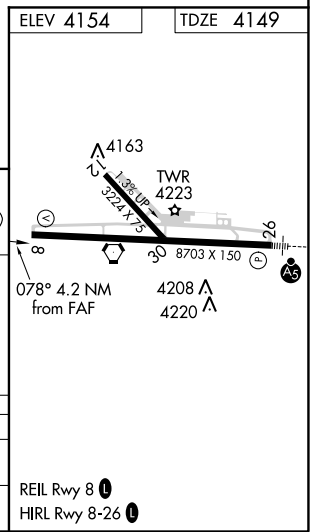
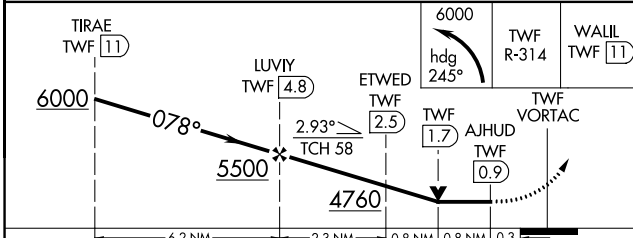
MISSED APPROACH: Climbing left turn to 6000 on heading 245° and TWF R-314 to WALL/TWF 11 DME and hold.

ASOS <b>135.025</b>	TWIN FALLS APP CON ★ <b>126.7 353.75</b>	TWIN FALLS TOWER ★ <b>118.2 (CTAF) 0 317.5</b>	GND CON <b>121.7</b>	CLNC DEL <b>123.65</b>	UNICOM <b>122.95</b>
------------------------	---	---	-------------------------	---------------------------	-------------------------



NW-1, 25 FEB 2021 to 25 MAR 2021

NW-1, 25 FEB 2021 to 25 MAR 2021



	6.2 NM	2.3 NM	0.8 NM	0.8 NM	0.3
CATEGORY	A	B	C	D	
S-8	4560-1	411 (500-1)	4560-1 1/8	411 (500-1 1/8)	
CIRCLING	4700-1 546 (600-1)	4780-1 626 (700-1)	5100-2 3/4 946 (1000-2 3/4)	5100-3 946 (1000-3)	

REIL Rwy 8  
HIRL Rwy 8-26