

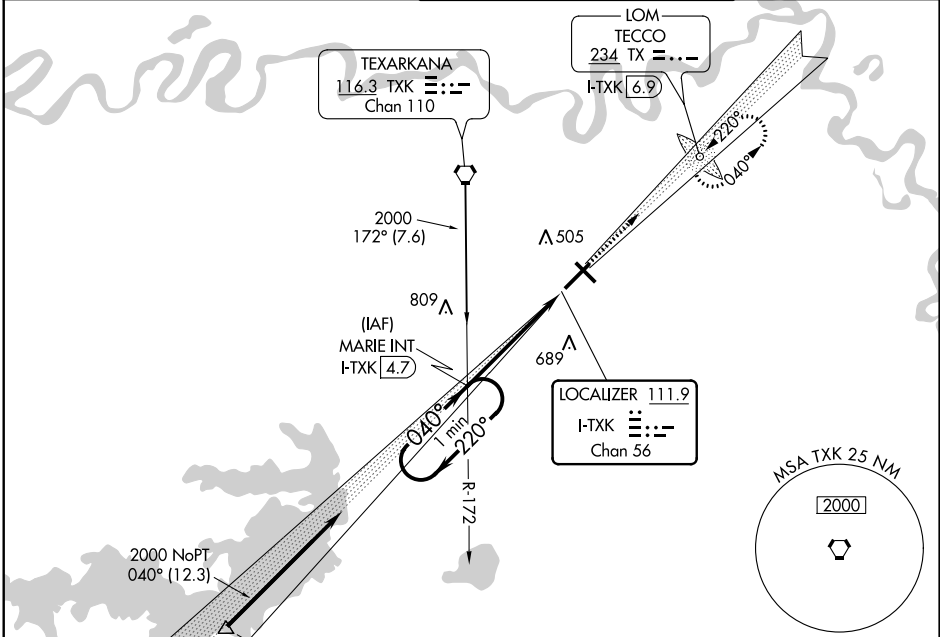
LOC/DME I-TXK 111.9 Chan 56	APP CRS 040°	Rwy Idg 6601 TDZE 360 Apt Elev 390
---	------------------------	---

LOC BC RWY 4
TEXARKANA RGNL-WEBB FIELD (TXK)

▼ Visibility reduction by helicopters NA. ADF or DME required. When local altimeter setting not received, use J Lynn Helms Sevier County altimeter setting and increase all MDA 100 feet, and increase S-4 Cats C/D and Circling Cats C/D visibility ¼ mile.

▲ MISSED APPROACH: Climb to 2100 via I-TXK northeast course to TECCO LOM/I-TXK 6.9 DME and hold.

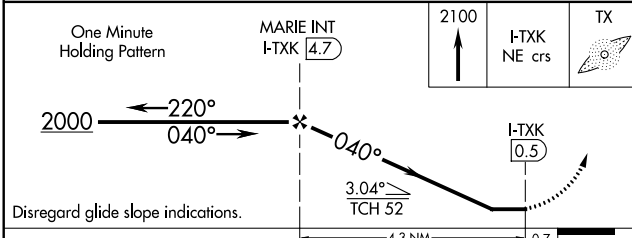
ATIS 120.2	FORT WORTH CENTER 123.925 269.475	TEXARKANA TOWER ★ 123.875 (CTAF) 235.625	GND CON 119.225
----------------------	---	---	---------------------------



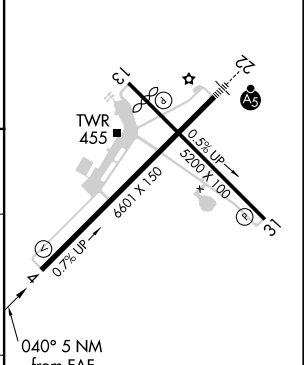
SC-1, 25 FEB 2021 to 25 MAR 2021

SC-1, 25 FEB 2021 to 25 MAR 2021

BACK COURSE



ELEV 390	D	TDZE 360
----------	---	----------



CATEGORY	A	B	C	D
S-4	880-1 520 (500-1)		880-1½ 520 (500-1½)	880-1¾ 520 (500-1¾)
CIRCLING	880-1 490 (500-1)		900-1½ 510 (600-1½)	1000-2 610 (700-2)

FAF to MAP 4.3 NM					
Knots	60	90	120	150	180
Min:Sec	4:18	2:52	2:09	1:43	1:26